

# Frank Harris & Co.



Clerkenwell, EC1M

£715 Per week

This is a modern two bedroom apartment in a wonderful location in the heart of Clerkenwell. Internally, the flat has a well-proportioned layout and contemporary fittings throughout.

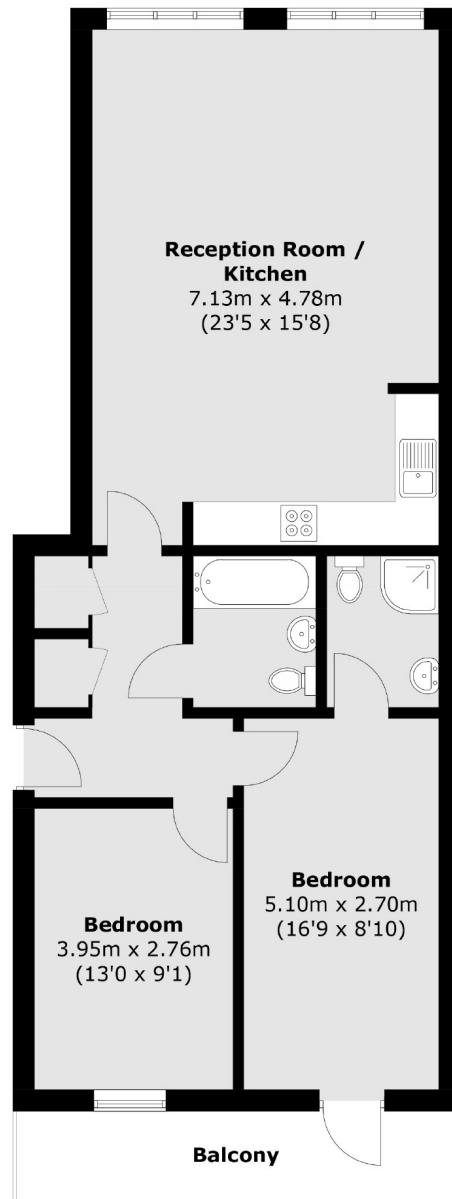


The building is located close to the junction of Clerkenwell Road and Goswell Road, with both Barbican and Farringdon stations nearby.

- Two Bedrooms • Two Bathrooms • Wood Floors •
- Balcony • Porter • Furnished •



# Frank Harris & Co.



Total area (approx.): 76.7 sq. m (825.6 sq. ft)  
Balcony: 7.6 sq. m (81.8 sq. ft)

Frank Harris & Co. Barbican and City  
87 Long Lane, London,  
EC1A 9ET  
020 7601 1919  
citylettings@frankharris.co.uk

Energy Rating: C. We aim to make our particulars both accurate and reliable. However they are not guaranteed; nor do they form part of an offer or contract. If you require clarification on any points then please contact us, especially if you're traveling some distance to view. Please note that appliances and heating systems have not been tested and therefore no warranties can be given as to their good working order.

