



# WETHERELL

MAYFAIR'S FINEST PROPERTIES



## Upper Grosvenor Street, W1K

£1,975 Per week

A newly renovated two-bedroom, two-bathroom apartment set within Eaton House, a prestigious portered building on Grosvenor Square with 24-hour portage and lift access, directly opposite Grosvenor Square..

The apartment is a lateral, well proportioned space, comprising a spacious reception room with a striking bay window that floods the space with natural light, a separate fully fitted kitchen, and two double bedrooms served by two modern bathrooms. Air conditioning is installed throughout.

Residents of Eaton House benefit from a 24-hour concierge service, providing both security and convenience in one of Mayfair's most prestigious settings.

Grosvenor Square is a prestigious garden square located to the east of Hyde Park and to the north of Piccadilly. The property is within reach of the many amenities offered by Mount Street and their surrounding areas.

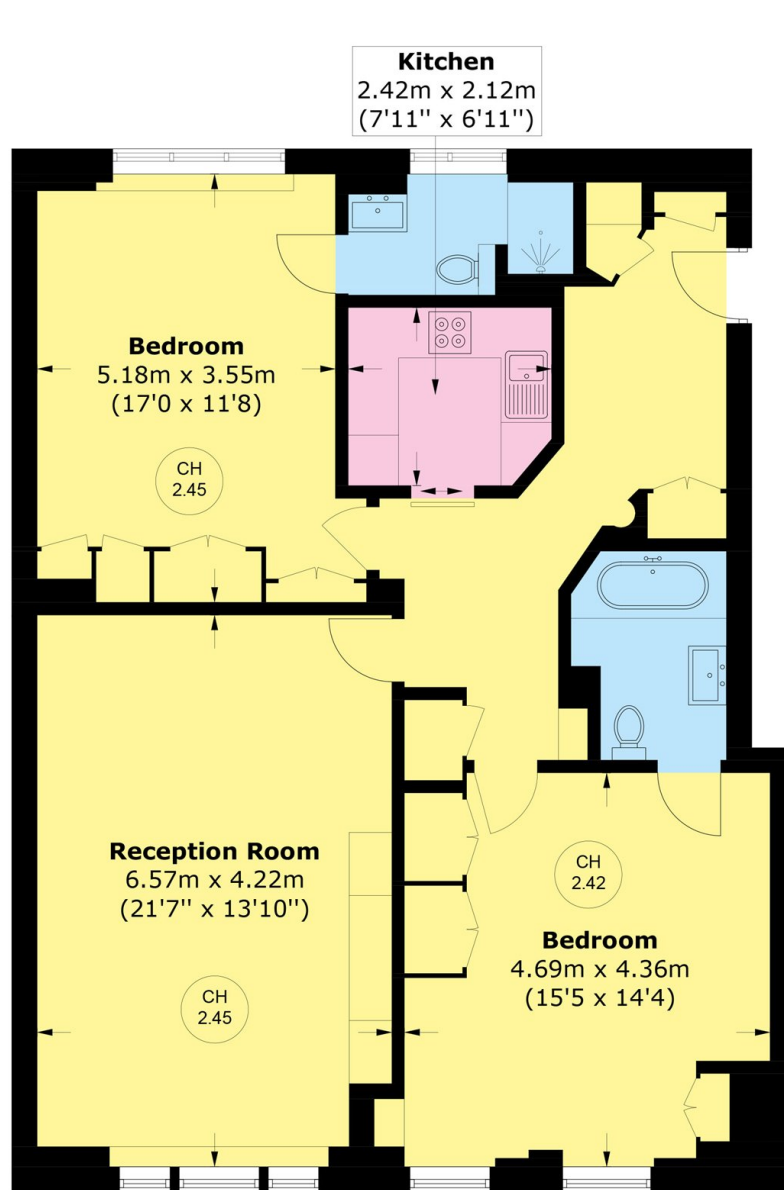


## FEATURES

- New Renovation • Two Double Bedrooms • Two Bathrooms • 24-Hour Porter • Wooden Flooring • Lift Access •



Upper Grosvenor Street,  
London, W1K



## Ground Floor

Total area (approx.): 99.5 sq. m (1,071.0 sq. ft)



**WETHERELL**  
MAYFAIR'S FINEST PROPERTIES

102 Mount Street,  
London, W1K 2TH

T: 020 7529 5588  
E: [rentals@wetherell.co.uk](mailto:rentals@wetherell.co.uk)

We aim to make our particulars both accurate and reliable. However they are not guaranteed; nor do they form part of an offer or contract. If you require clarification on any points then please contact us, especially if you're traveling some distance to view. Please note that appliances and heating systems have not been tested and therefore no warranties can be given as to their working order.



**RICS** | Regulated  
Estate Agent  
and Letting Agent

[wetherell.co.uk](http://wetherell.co.uk)