

for sale

£215,000



Eve Lane Dudley DY1 3TU

**** A TRADITIONAL SEMI DETACHED HOME SET IN A POPULAR RESIDENTIAL AREA OF DUDLEY PERFECT FOR FOR FIRST TIME BUYERS **** Briefly comprising lounge, kitchen/ dining area, three bedrooms, bathroom, front and rear gardens.

Eve Lane Dudley DY1 3TU

Entrance Porch

Double glazed door to the front.

Entrance Hall

Double glazed door to the front elevation, central heating radiator, stairs to first floor accommodation.

Lounge

11' 8" x 11' 2" (3.56m x 3.40m)

Double glazed window to the front elevation, electric fire with feature surround, central heating radiator.

Kitchen / Dining Room

17' 8" x 10' 2" (5.38m x 3.10m)

Kitchen area to include wall and base units with work surfaces over, stainless steel sink & drainer unit with mixer tap over, gas cooker point, plumbing for washing machine, space for domestic appliances, tiling to splashback, built-in understairs storage pantry, double glazed window to the rear, double glazed french doors to the rear leading to garden.



First Floor

Landing

Double glazed window to the side.

Bedroom One

11' 1" x 10' 10" (3.38m x 3.30m)

Double glazed window to the front, central heating radiator.

Bedroom Two

10' 2" x 9' 10" (3.10m x 3.00m)

Double glazed window to the rear, fitted wardrobes, central heating radiator.

Bedroom Three

7' 3" x 6' 3" (2.21m x 1.91m)

Double glazed window to the front, central heating radiator.

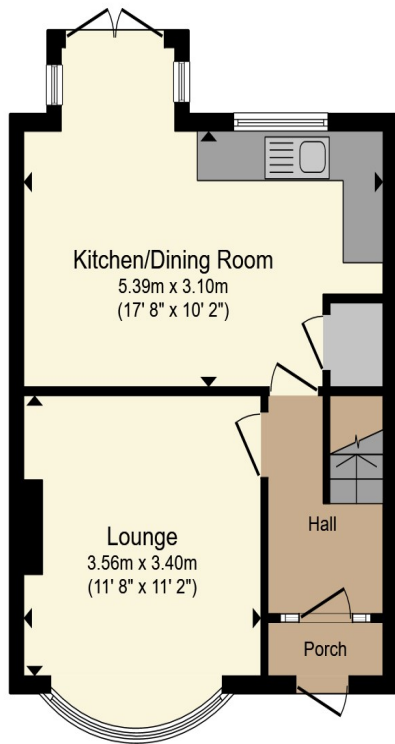
Bathroom

Suite to comprise bath with electric shower over, wash hand basin, low level w.c., tiling, double glazed window to the rear.

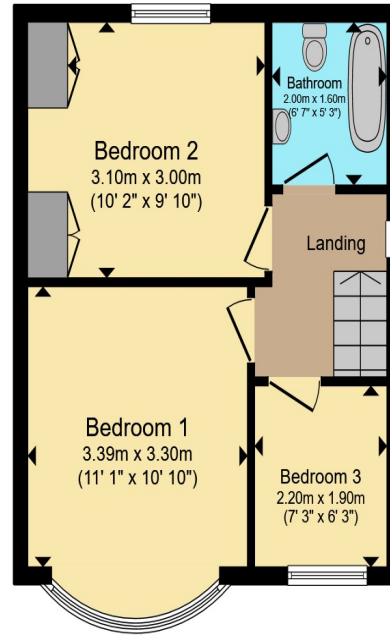
Outside

To the front of the property step approach to front door with side access to rear garden, lawned area. Tiered rear garden with lawned area, step approach to further garden area, storage shed.





Ground Floor



First Floor

Total floor area 75.3 m² (811 sq.ft.) approx

This floor plan is for illustrative purposes only. It is not drawn to scale. Any measurements, floor areas (including any total floor area), openings and orientation are approximate. No details are guaranteed, they cannot be relied upon for any purpose and they do not form part of any agreement. No liability is taken for any error, omission or misstatement. A party must rely upon its own inspection(s). Powered by www.propertybox.io



To view this property please contact Connells on

T 01384 214 770
E dudley@connells.co.uk

4 & 5 Stone Street
 DUDLEY DY1 1NS

Property Ref: DUD314615 - 0003

Tenure:Freehold EPC Rating: D

Council Tax Band: B

view this property online connells.co.uk/Property/DUD314615



1. MONEY LAUNDERING REGULATIONS Intending purchasers will be asked to produce identification documentation at a later stage and we would ask for your co-operation in order that there will be no delay in agreeing the sale. 2. These particulars do not constitute part or all of an offer or contract. 3. The measurements indicated are supplied for guidance only and as such must be considered incorrect. Potential buyers are advised to recheck measurements before committing to any expense. 4. We have not tested any apparatus, equipment, fixtures, fittings or services and it is in the buyers interest to check the working condition of any appliances.

Connells Residential is registered in England and Wales under company number 1489613, Registered Office is Cumbria House, 16-20 Hockliffe Street, Leighton Buzzard, Bedfordshire, LU7 1GN. VAT Registration Number is 500 2481 05.

see all our properties at www.connells.co.uk | www.rightmove.co.uk | www.zoopla.co.uk