



31 Draycott Avenue | | LONDON | SW3 3BS

£2,562 Per month

**ESON2**  
REAL ESTATE

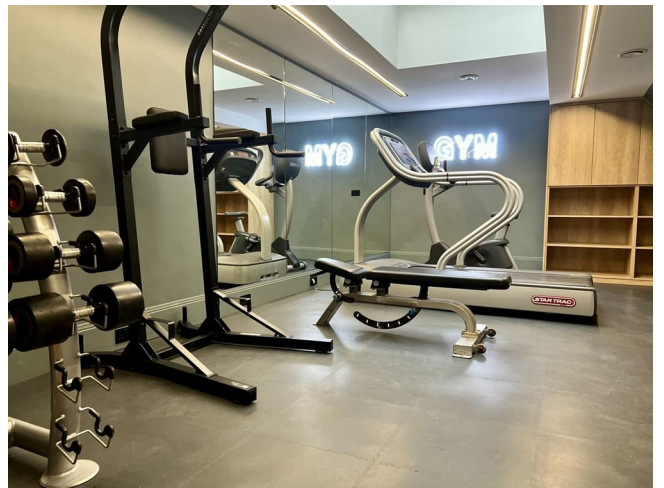
## Key features

- Open-Plan Living
- High-End Kitchen
- gym facilities
- Smart Design
- On-site Gym
- Communal Workspace

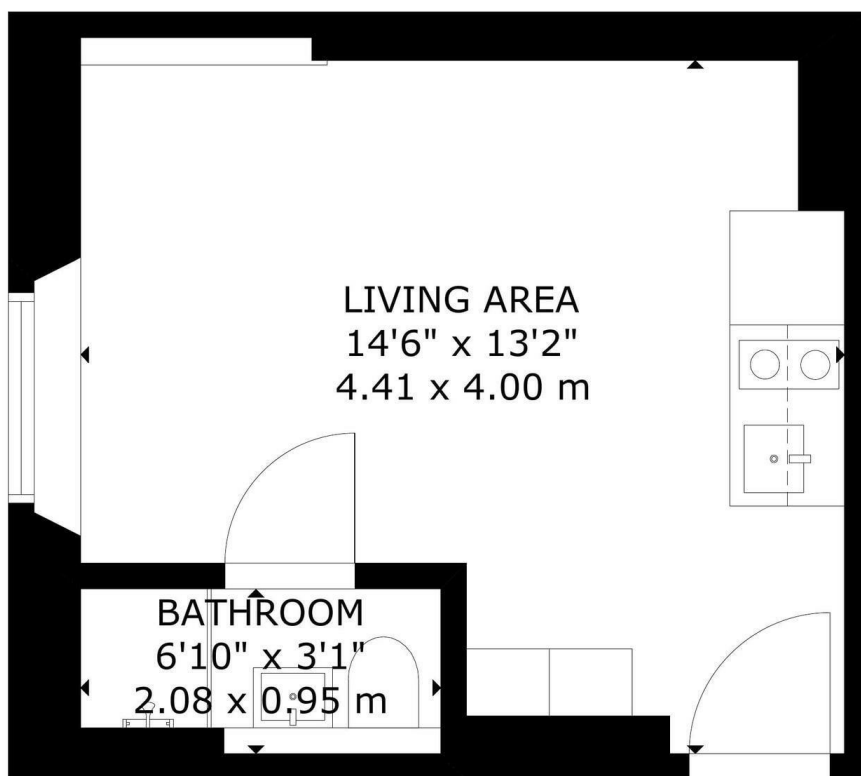
## Description

This newly renovated Chelsea studio offers modern interiors, a study room, premium appliances, and a luxury bathroom. With built-in storage and excellent transport links, it's a perfect choice for those seeking upscale living near King's Road.

## Directions

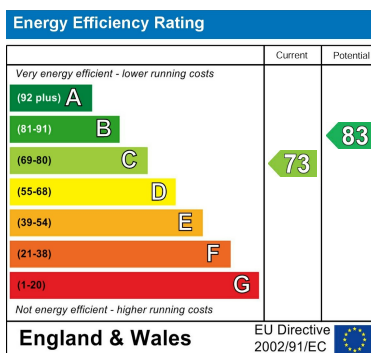


This newly renovated studio apartment, located in Chelsea, offers a sleek and functional living space with modern interiors and an open-plan layout that maximizes both space and natural light, creating a stylish and welcoming atmosphere.



GROSS INTERNAL AREA  
TOTAL: 18 m<sup>2</sup>/191 sq ft  
GROUND FLOOR: 18 m<sup>2</sup>/191 sq ft  
SIZE AND DIMENSIONS ARE APPROXIMATE, ACTUAL MAY VARY

GROUND FLOOR



Council Tax Band    EPC Rating C



301 Michelin House 81 Fulham road  
London  
Greater London  
SW3 6RD  
07920 257649  
fayeel@eson2.co.uk  
www.eson2.co.uk