



Guide Price
£340,000

Freehold

3x  1x  2x 

**Streete Court Road,
Westgate-On-Sea, Kent,
CT8**

OVER 60?

Secure this property
for up to **59% less!**

Wards
Helping you move forwards



Main features

- Garage to the side along with off road parking
- Being sold with no onward chain
- Situated on a lovely corner plot with pretty front and side gardens
- Located close to local amenities and transport links
- Ready for you to move in and start enjoying right away

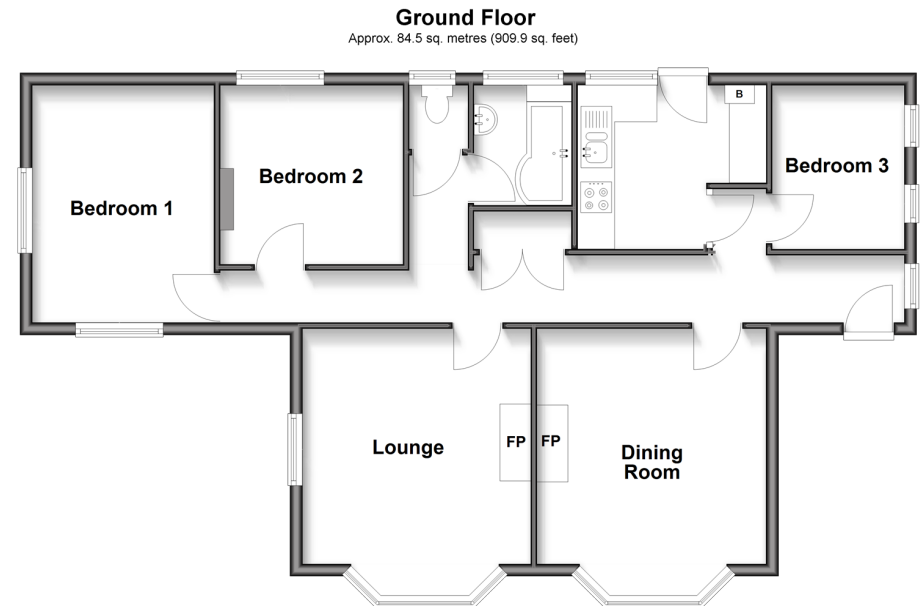
Accommodation

GROUND FLOOR

- Entrance Hallway
- Bedroom 3 : 8'9 x 6'6 (2.67m x 1.98m)
- Kitchen : 9'11 x 8'9 (3.02m x 2.67m)
- Bathroom
- Separate Toilet
- Lounge : 14'8 into bay x 12'1 (4.47m x 3.69m)
- Dining Room : 14'9 into bay x 12'1 (4.50m x 3.69m)
- Bedroom 2 : 9'11 x 9'6 (3.02m x 2.90m)
- Bedroom 1 : 12'9 x 9'7 (3.89m x 2.92m)

OUTSIDE

- Garage and Off Road Parking
- Garden to Front and Side
- Garden to Rear



Call Birchington - 01843 842551 ■ wardsof Kent.co.uk

- Legal advice should be taken to verify fixtures/fittings, planning, alterations and/or lease details
- Through a Homewise Home For Life Plan people aged 60+ can secure this property for up to 59% less, by purchasing a Lifetime Lease

- Appliances & services are untested, dimensions are approximate and floor plans are not to scale



10129904/20260316/DL/KW