



South Close, Gosport PO12 2PS

welcome to

South Close, Gosport

**** Great for Bus and Road Links ** Close to Shops and Schools ** No Onward Chain ** Excellent Parking and Garage ** Enclosed Rear Garden ****

Entrance Hall

UPVC door to front access, UPVC double glazed window to side elevation, inner door, door to:

Cloakroom

UPVC double glazed window to side elevation, wash hand basin, wc, radiator.

Lounge/Diner

22' 5" x 11' 9" (6.83m x 3.58m)

UPVC double glazed window to front elevation, three radiators, stairs to first floor landing, understairs cupboard, UPVC double glazed sliding patio doors to rear garden, door to:

Kitchen

10' 8" x 7' 4" (3.25m x 2.24m)

UPVC door to rear garden, UPVC double glazed window to rear elevation, matching wall and base units, one and a half bowl stainless steel sink and drainer unit, integrated oven, hob, integrated undercounter fridge and freezer, integrated washing machine, extractor.

First Floor Landing

UPVC double glazed window to side elevation, access to loft space, doors to:

Bedroom 1

13' 8" max x 9' 9" max (4.17m max x 2.97m max)

UPVC double glazed window to rear elevation, fitted four door wardrobe, radiator.

Bedroom 2

9' 8" x 8' 6" (2.95m x 2.59m)

UPVC double glazed window to rear elevation, range of in-built wardrobes with one housing gas boiler, radiator.

Bedroom 3

9' 9" x 8' 4" (2.97m x 2.54m)

UPVC double glazed window to front elevation, radiator.

Bathroom

UPVC double glazed window to front elevation, bath with shower over, wc, wash hand basin, tiled walls heated towel rail.

Outside

To the front there is a driveway providing off road parking leading to the garage, shingle section, side pedestrian access to rear garden, To the rear the garden has a patio section, laid to lawn area, external tap, shrubs and plant sections and enclosed to perimeters.

Garage

Metal up and over door, power, light and gas and electric meters.





view this property online fox-and-sons.co.uk/Property/GOS113128



welcome to

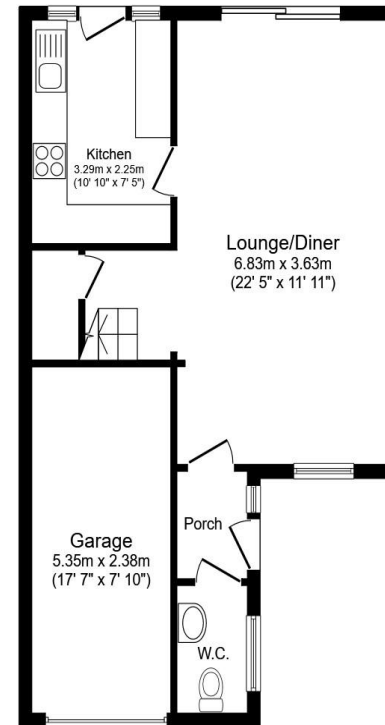
South Close, Gosport

- Three Bedrooms
- Fitted Kitchen
- Enclosed Rear Garden
- No Onward Chain
- Garage and Driveway

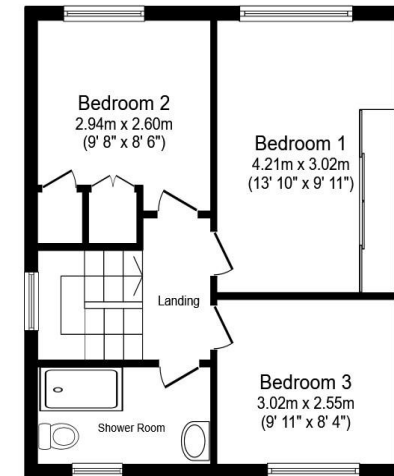
Tenure: Freehold EPC Rating: C
Council Tax Band: C

offers in excess of

£325,000



Ground Floor



First Floor

Total floor area 97.2 m² (1,046 sq.ft.) approx

This floor plan is for illustrative purposes only. It is not drawn to scale. Any measurements, floor areas (including any total floor area), openings and orientation are approximate. No details are guaranteed, they cannot be relied upon for any purpose and they do not form part of any agreement. No liability is taken for any error, omission or misstatement. A party must rely upon its own inspection(s). Powered by www.propertybox.io



view this property online fox-and-sons.co.uk/Property/GOS113128



Property Ref:
GOS113128 - 0004

1. MONEY LAUNDERING REGULATIONS Intending purchasers will be asked to produce identification documentation at a later stage and we would ask for your co-operation in order that there is no delay in agreeing the sale. 2. These particulars do not constitute part or all of an offer or contract. 3. The measurements indicated are supplied for guidance only and as such must be considered incorrect. Potential buyers are advised to recheck measurements before committing to any expense. 4. We have not tested any apparatus, equipment, fixtures or services and it is in the buyers interest to check the working condition of any appliances. 5. Where an EPC, or a Home Report (Scotland only) is held for this property, it is available for inspection at the branch by appointment. If you require a printed version of a Home Report, you will need to pay a reasonable production charge reflecting printing and other costs. 6. We are not able to offer an opinion either written or verbal on the content of these reports and this must be obtained from your legal representative. 7. Whilst we take care in preparing these reports, a buyer should ensure that his/her legal representative confirms as soon as possible all matters relating to title including the extent and boundaries of the property and other important matters before exchange of contracts.

Fox & Sons is a trading name of Sequence (UK) Limited which is registered in England and Wales under company number 4268443, Registered Office is Cumbria House, 16-20 Hockliffe Street, Leighton Buzzard, Bedfordshire, LU7 1GN. VAT Registration Number is 500 2481 05.



023 9250 3733



Gosport@fox-and-sons.co.uk



10 High Street, GOSPORT, Hampshire, PO12 1BX



fox-and-sons.co.uk