



Heathpark Drive, Windlesham

**£925,000**



## Heathpark Drive, Windlesham

This extended family home in Windlesham offers 2469 sq. ft of accommodation including the double length garage.

### FEATURES

- Optiplan kitchen with island and Quooker tap
- Surround sound speakers
- Neff and Siemens appliances
- Remote control gas fire
- Premium bathroom fittings and sanitaryware
- Hive heating system
- Double glazing

### ACCOMMODATION

- Entrance hall
- Downstairs shower room
- Three reception rooms
- Kitchen/breakfast room
- Utility room
- Four bedrooms
- Bedroom 1 en-suite
- Family bathroom

### OUTSIDE

- Block paved driveway
- Garage
- Rear garden with decked terrace

### EPC RATING

D

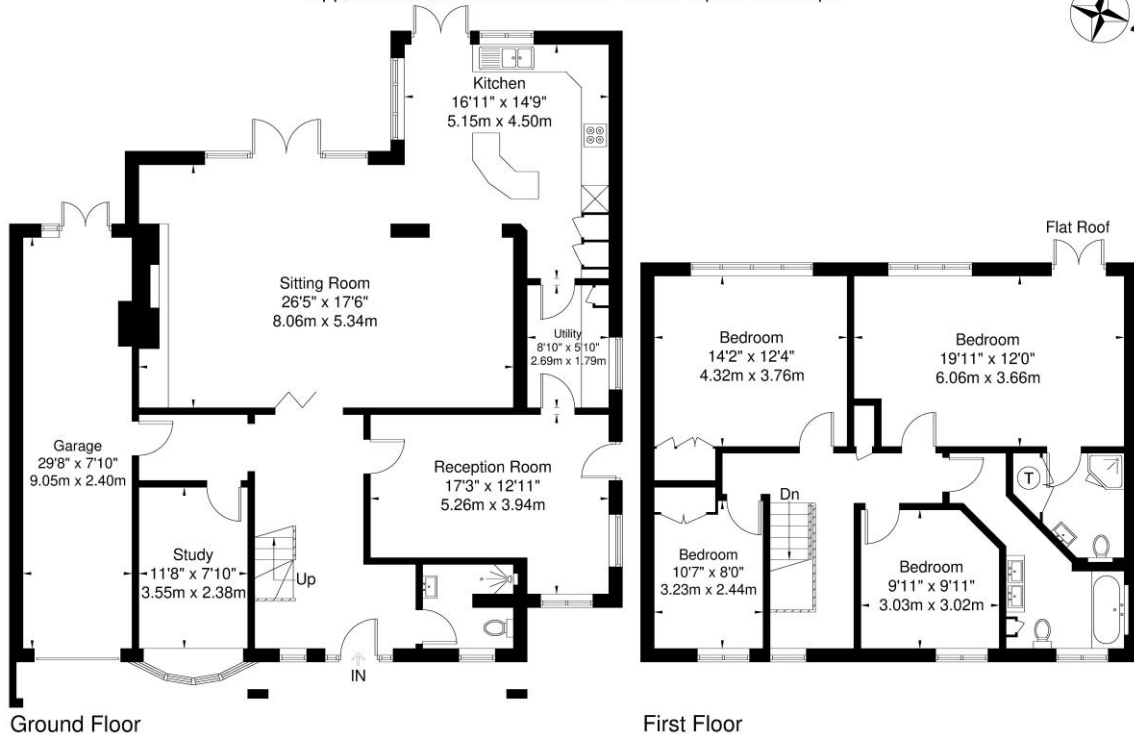
### LOCAL AUTHORITY/COUNCIL TAX

Surrey Heath – Band G





Approximate Gross Internal Area = 229.4 sq m / 2469 sq ft



Ground Floor

First Floor

Illustration for identification purposes only, measurements are approximate, not to scale.

**Disclaimer:** We wish to inform prospective purchasers that we have prepared these sales particulars as a general guide. We have not carried out a detailed survey, nor tested the services, appliances and specific fittings. Room sizes are approximate and rounded: they are taken between internal wall surfaces and therefore include cupboards / shelves, etc. Accordingly, they should not be relied upon for carpeting, curtains / blinds and kitchen equipment, whether fitted or not, are deemed removable by the vendor unless specifically itemized within these.

**Postcode for sat nav: G20 6JB**



**NEWTON ROWE**  
SALES & LETTINGS

The Old Dairy, 7 Updown Hill, Windlesham, Surrey GU20 6AF  
enquiries@newtonrowe.co.uk | 01276 986900