

Leigham Court Road, SW16

£415,000

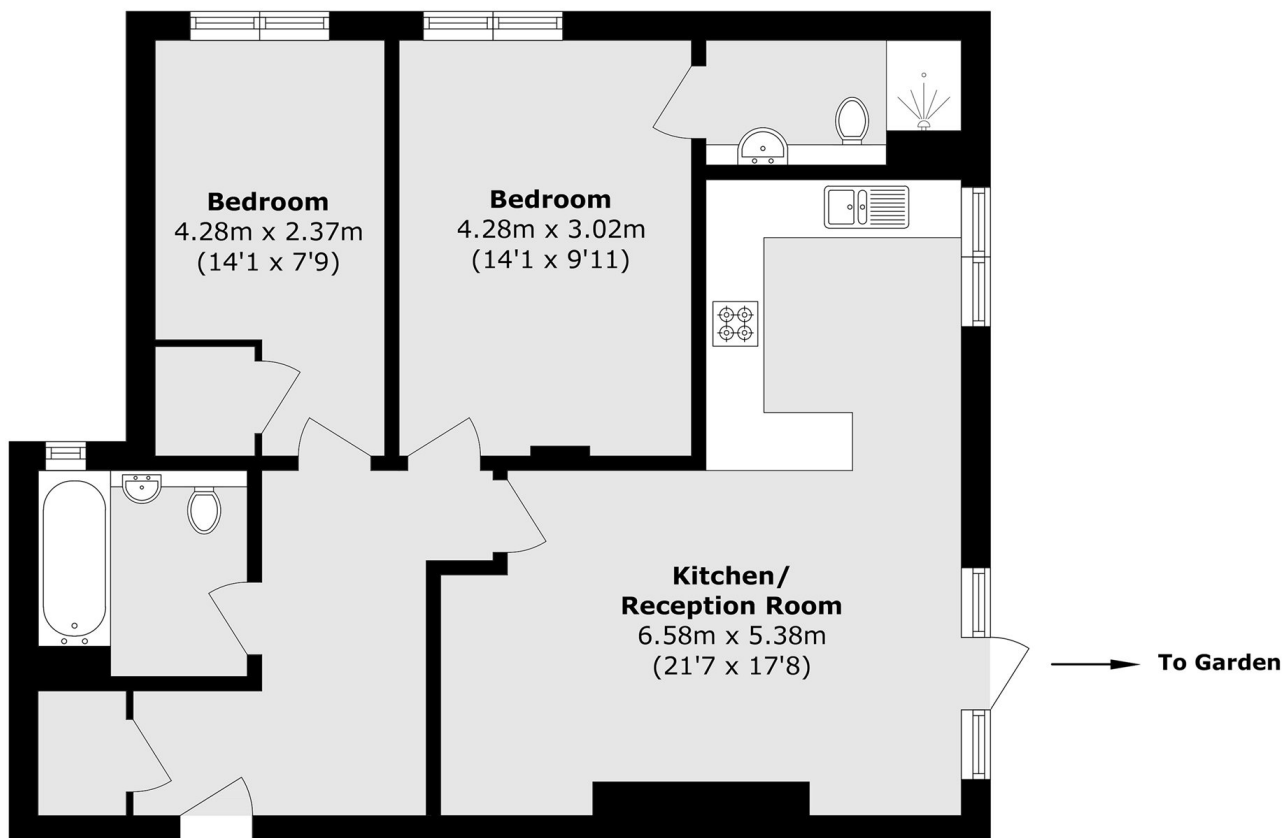
Measuring over 764 sq ft, this two double bedroom, two bathroom property is offered to the market with no onward chain. The property benefits from a spacious open-plan kitchen/living area, two well-proportioned double bedrooms, private garden and parking.

Leigham Court Road is ideally located for Streatham Hill and Tulse Hill stations, both providing frequent services into London Victoria and London Bridge. A good selection of shops and amenities can be found nearby along Streatham High Road and in West Norwood.

Features

- Two Double Bedrooms
- Open Plan Kitchen/Reception
- Private Garden
- No Onward Chain
- Parking Available
- Two Bathrooms

Leigham Court Road, London, SW16



Total area (approx.): 71.1 sq. m (764.2 sq. ft)