



NORTHERN ROAD, AYLESBURY, BUCKINGHAMSHIRE

PRICE £280,000

FREEHOLD

A charming two bedroom terraced house situated in a convenient central location, within easy reach of local amenities, schools, the town centre and station. The accommodation comprises a living room, kitchen, two bedrooms and a bathroom. Outside, the property benefits from a private garden and off-road parking.



NORTHERN ROAD

- COSY TWO BEDROOM TERRACED HOUSE
- CENTRAL LOCATION
- CLOSE TO TOWN AND STATION
- GRAVELLED OFF ROAD PARKING
- TWO DOUBLE BEDROOMS
- CLOSE TO LOCAL AMENITIES
- CLOSE TO SCHOOLS
- PRIVATE REAR GARDEN



LOCATION

Aylesbury town centre is within walking distance, with an excellent range of shopping and recreational facilities, numerous restaurants and a main line rail station (Marylebone 1 hour). Aylesbury is particularly well served by three of the area's top performing Grammar Schools- Aylesbury Grammar School for boys, High School for Girls and Sir Henry Floyd (mixed). Inspired by the rolling Chiltern Hills, the Aylesbury Waterside Theatre provides an entertaining evening out at the heart of the Canalside and beautiful outdoor purpose-built restaurant and entertainment.

ACCOMMODATION

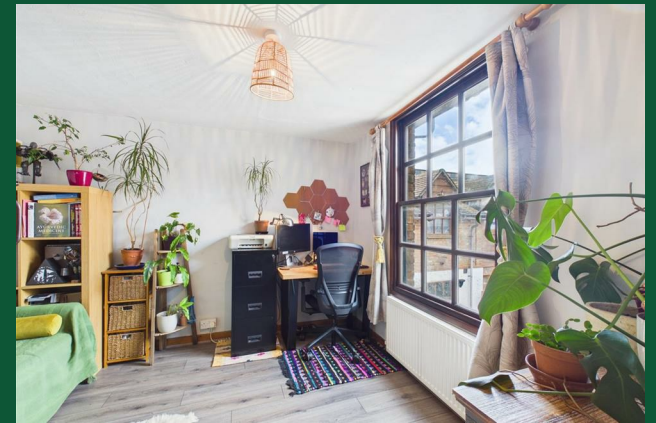
The accommodation is accessed via a spacious entrance hall, offering ample room for furniture and storage, with stairs rising to the first floor and a door providing access to the rear garden. The cosy living room provides a comfortable space to relax, while the kitchen is well equipped with a generous range of worktop surfaces and cupboard storage. There is space for a cooker, fridge, dishwasher and washing machine, making it both practical and functional for everyday living.

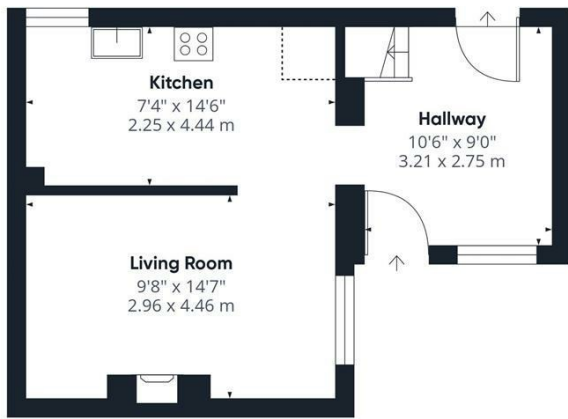
On the first floor, the landing benefits from an airing cupboard and loft access. There are two double bedrooms and a bathroom serving the accommodation.

Outside, the enclosed rear garden enjoys a lawned area complemented by small trees, a bark border and a garden shed, creating an attractive and low-maintenance outdoor space. Gated access leads to the property via a gravelled pathway, while to the front there is the added benefit of gravelled off-road parking.

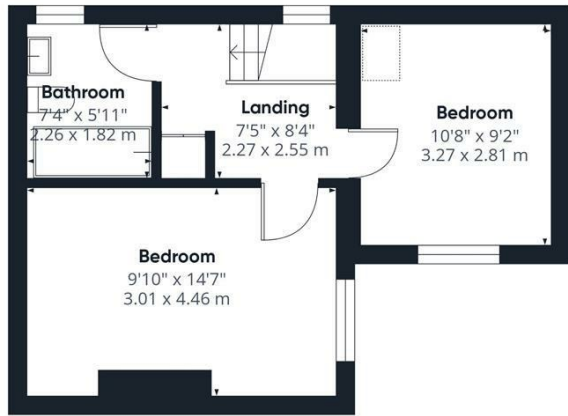
This appealing home combines comfortable living accommodation with a highly convenient location and early viewing is recommended.

NORTHERN ROAD





Ground Floor



Floor 1



Approximate total area⁽¹⁾
673 ft²
62.5 m²

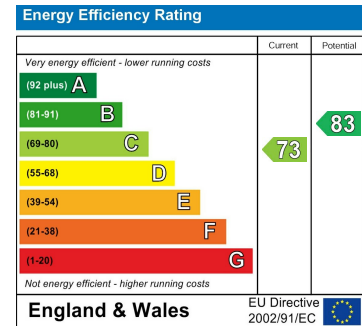
Reduced headroom
6 ft²
0.6 m²

(1) Excluding balconies and terraces

Reduced headroom
----- Below 5 ft/1.5 m

Calculations reference the RICS IPMS 3C standard. Measurements are approximate and not to scale. This floor plan is intended for illustration only.

GIRAFFE 360



Agents Note: Whilst every care has been taken to prepare these particulars, they are for guidance purposes only. All measurements are approximate and are for general guidance purposes only and whilst every care has been taken to ensure their accuracy, they should not be relied upon and potential buyers/tenants are advised to recheck the measurements

George David & Co
46 High Street
Aylesbury
HP20 1SE

01296 393 393
info@georgedavid.co.uk
www.georgedavid.co.uk

