



Edward Way, TW15

£2,000,000

Waterview



A unique opportunity to purchase the ultimate in waterside lifestyle. This stunning lakeside house is set in over 7 acres of beautifully kept gardens and natural woodland and enjoys breathtaking views across the lake and surrounding countryside.

The grounds and house are accessed via Edward Way in Surrey Middlesex.





With the feeling of a private country estate, the approach is via a sweeping driveway, through beautifully maintained grounds to the main house. Built in 1988 with London old stock brickwork and beautiful timber interiors the accommodation offers over 3,000 sq ft of living space.

The main house has an impressive 33ft double reception room overlooking the lake with high vaulted ceilings open plan kitchen, three bedrooms all with access to garden, an en-suite and further family bathroom. There is a connecting independent annexe with an impressive double reception room with bi-fold doors to garden and high vaulted ceiling, stylish modern kitchen, bathroom and two bedrooms.

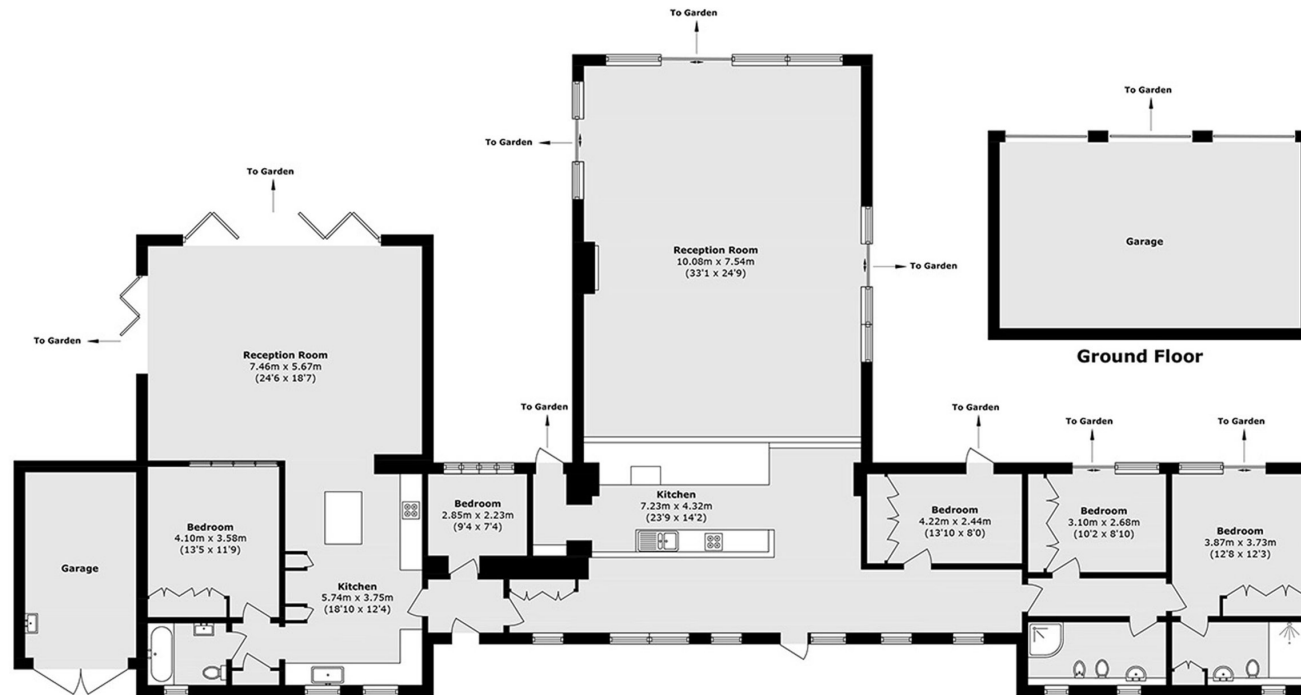
To the front of the house the driveway has parking for several cars, a triple garage and further garage adjoining the annexe. To the lakeside there is a beautiful garden terrace, overhanging lakeside deck, children's tree house and extensive manicured lawned gardens. The lakeside grounds extend to over 7 acres, with submitted planning for a 1,200 sq ft bungalow to replace an existing residential dwelling.

Features

- Lakeside House
- Stunning Location
- Over 7 Acres
- Planning For Additional House
- Extensive Gardens
- Unique Opportunity



Edward Way, Ashford, TW15



Ground Floor

Total area (approx): 287.4 sq. m (3093.5 sq. ft)
(Excluding Garage)
Garage total (approx): 56.8 sq. m (611.3 sq. ft)

Contact

To arrange a viewing call our office on the number below or visit our website.



Energy Rating: E. We aim to make our particulars both accurate and reliable. However they are not guaranteed; nor do they form part of an offer or contract. If you require clarification on any points then please contact us, especially if you're traveling some distance to view. Please note that appliances and heating systems have not been tested and therefore no warranties can be given as to their good working order.

