



Hotspur Street, SE11

£450,000

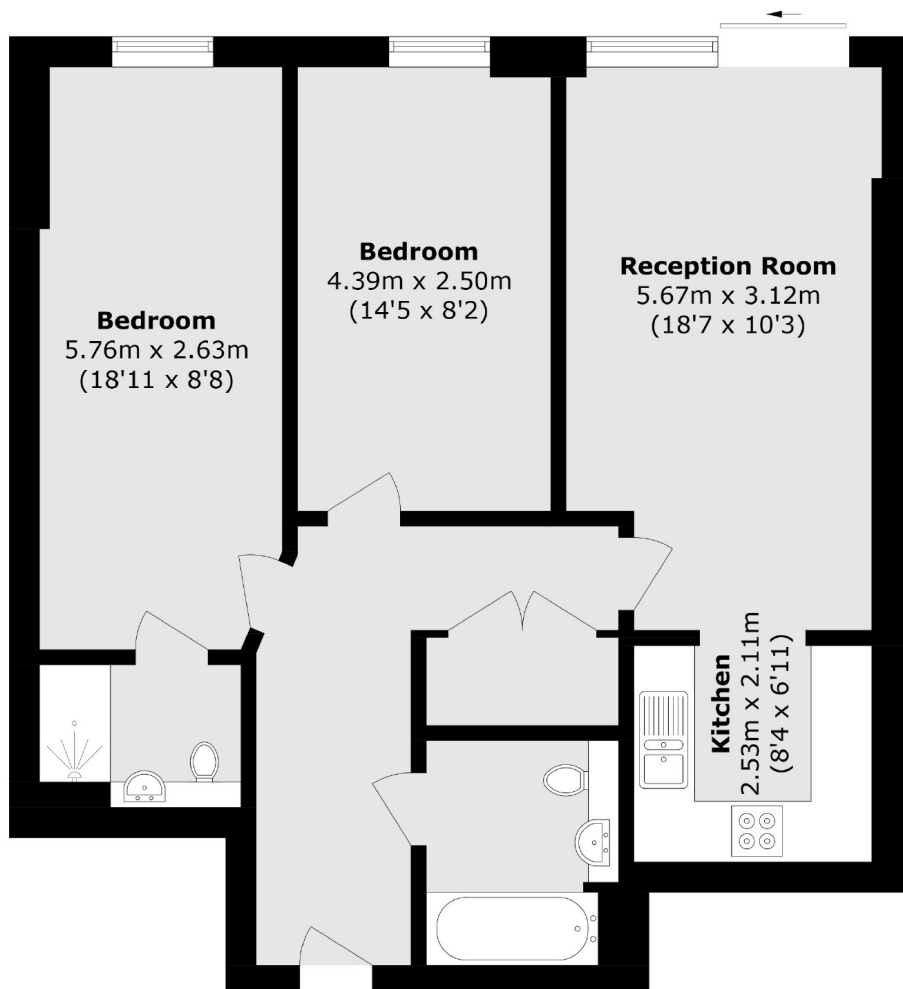
Offered with no onward chain, this well-designed home features a generous open-plan reception room and kitchen, perfect for entertaining, with direct access to the private garden. The flat also benefits from ample storage throughout, two well-proportioned double bedrooms, and two modern bathrooms, making it an ideal first time buy.

Located in the centre of Kennington, just moments from pubs, eateries and local shops. High in community spirit, transport links are unbeatable with Kennington, Oval, Lambeth North and Vauxhall stations close by, within a short stroll of Kennington Park and within easy reach of the City and West End.

Features

- Two Double Bedrooms
- Private Garden
- Two Bathrooms
- Healthy Lease
- No Onward Chain

Hotspur Street, London, SE11



Total area (approx.): 67.8 sq. m (729.7 sq. ft)