



Elmay Road, Birmingham

burchell  
edwards



## Property Description

Nestled on the well-regarded Elmay Road, this attractive three-bedroom semi-detached bungalow offers a superb opportunity for buyers seeking comfortable single-storey living in a peaceful Birmingham location. The property boasts a bright and spacious lounge, a practical fitted kitchen, and three well-proportioned bedrooms, providing flexibility for family life, guests, or a dedicated home office. Outside, the bungalow benefits from a generous driveway and a private rear garden, ideal for relaxing or entertaining. With local amenities, schools, and convenient transport links close by, this home combines tranquillity with excellent accessibility, making it an appealing choice for a wide range of buyers.

## Entrance Hallway

Central heating radiator and loft access via hatch.

## Lounge

Double glazed window to rear elevation and two central heating radiators.

## Kitchen

Three double glazed windows to side elevation, double glazed door to side elevation, a range of wall and base units with work surface over incorporating a sink with drainer unit, space and connections for gas cooker, space for appliances, tiling to splash prone areas, laminate flooring and central heating radiator.

### **Bedroom One**

Double glazed bay window to front elevation, double glazed window to side elevation, central heating radiator and fitted wardrobes.

### **Bedroom Two**

Double glazed window to front elevation and central heating radiator.

### **Bedroom Three**

Double glazed window to side elevation, central heating radiator and central heating boiler housed.

### **Bathroom**

Double glazed window to side elevation, W.C, wash hand basin, walk in shower, extractor, central heating radiator, tiling to walls and tiled flooring.

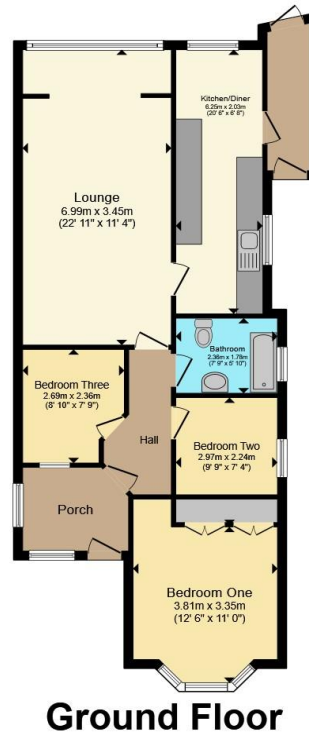
### **Loft Space**

Electric and built in storage cabinets.









**Ground Floor**

Total floor area 81.1 m<sup>2</sup> (873 sq.ft.) approx

This floor plan is for illustrative purposes only. It is not drawn to scale. Any measurements, floor areas (including any total floor area), openings and orientation are approximate. No details are guaranteed, they cannot be relied upon for any purpose and they do not form part of any agreement. No liability is taken for any error, omission or misstatement. A party must rely upon its own inspection(s). Powered by [www.propertybox.io](http://www.propertybox.io)



To view this property please contact Burchell Edwards on

**T 0121 742 1725**  
**E [sheldon@burchelledwards.co.uk](mailto:sheldon@burchelledwards.co.uk)**

2208 Coventry Road Sheldon  
 BIRMINGHAM B26 3JH

EPC Rating: E Council Tax  
 Band: C

Tenure: Freehold

**view this property online [burchelledwards.co.uk/Property/SHL211367](http://burchelledwards.co.uk/Property/SHL211367)**



1. MONEY LAUNDERING REGULATIONS Intending purchasers will be asked to produce identification documentation at a later stage and we would ask for your co-operation in order that there will be no delay in agreeing the sale. 2. These particulars do not constitute part or all of an offer or contract. 3. The measurements indicated are supplied for guidance only and as such must be considered incorrect. Potential buyers are advised to recheck measurements before committing to any expense. 4. We have not tested any apparatus, equipment, fixtures, fittings or services and it is in the buyers interest to check the working condition of any appliances.

Burchell Edwards is a trading name of Connells Residential which is registered in England and Wales under company number 1489613, Registered Office is Cumbria House, 16-20 Hockliffe Street, Leighton Buzzard, Bedfordshire, LU7 1GN. VAT Registration Number is 500 2481 05.

**See all our properties at [www.burchelledwards.co.uk](http://www.burchelledwards.co.uk) | [www.rightmove.co.uk](http://www.rightmove.co.uk) | [www.zoopla.co.uk](http://www.zoopla.co.uk)**

Property Ref: SHL211367 - 0007