

TG

SALES & LETTINGS



Goodmoor Crescent, Churchdown, Gloucester Gloucestershire GL3 2DL

£415,000

- Beautifully Presented Family Home
- Extended in all the Right Places
- Three Double Bedrooms and a Single Fourth
- Bathroom, Shower Room & GF Cloakroom
- Spacious Lounge/Diner
- Snug/Home Office or Play Room
- Garage and Ample Off Road Parking
- Fantastic Location in the heart of Churchdown

TG Sales welcome you to this stylishly extended and immaculately presented 4-bedroom semi-detached property, situated in the ever-popular village of Churchdown.

Perfectly blending modern comfort with practical living, this home is ideal for growing families, professionals working from home, or anyone seeking space, sustainability, and convenience. Situated in the desirable area of Churchdown, this home is perfectly positioned between Gloucester and Cheltenham, offering excellent local amenities, reputable schools, and superb transport links. Ideal for commuters and families alike.

Upon entering, you're greeted with a bright and welcoming hallway leading to a spacious lounge/Diner, perfect for family evenings. The extended section of the property offers a versatile additional reception room, currently used as a snug but easily adaptable to suit your lifestyle.

The kitchen is modern and functional, with integrated appliances and plenty of storage. Upstairs, you'll find four well-proportioned bedrooms, including a stylish master bedroom with direct access to the family bathroom. The additional family shower room is finished to a high standard with contemporary fittings.

Outside - To the front, the property benefits from a large driveway with off-road parking for multiple vehicles. The rear garden has been landscaped for minimal upkeep, featuring a large patio area, and fencing.

The property is fitted with solar panels, significantly reducing energy costs – a forward-thinking addition that brings both environmental and financial benefits.

Arrange a Viewing: This extended family home offers space, flexibility, and style in equal measure. Early viewing is highly recommended to fully appreciate what this property has to offer.



Directions

SATNAV postcode GL3 2DL

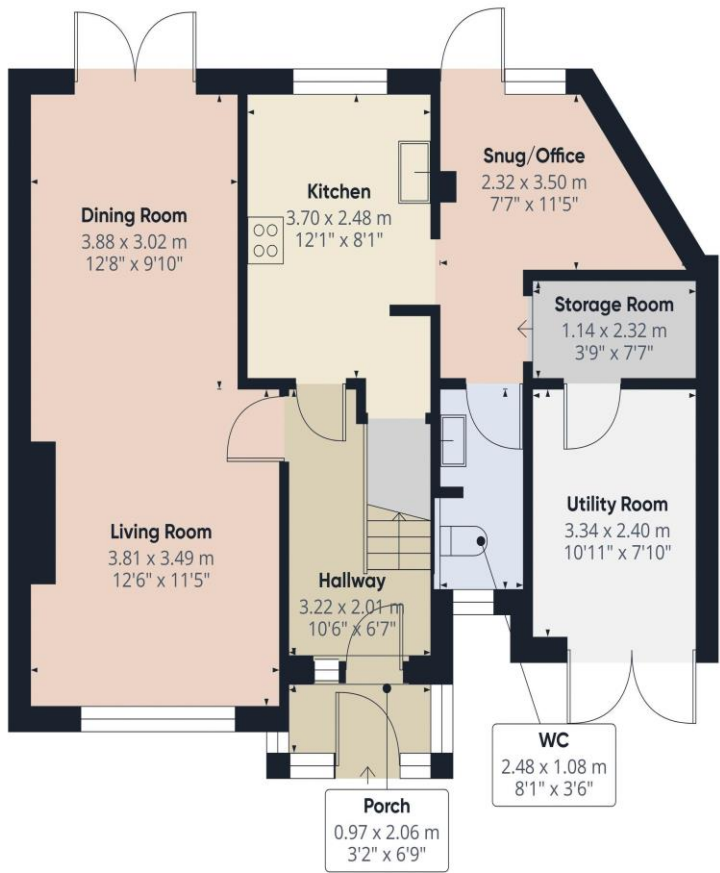
Tenure Freehold

Local Authority Gloucester

Services Electric, Mains Gas, Mains Drainage and Water are all believed to be connected to the property.

Council tax band D





Floor 0

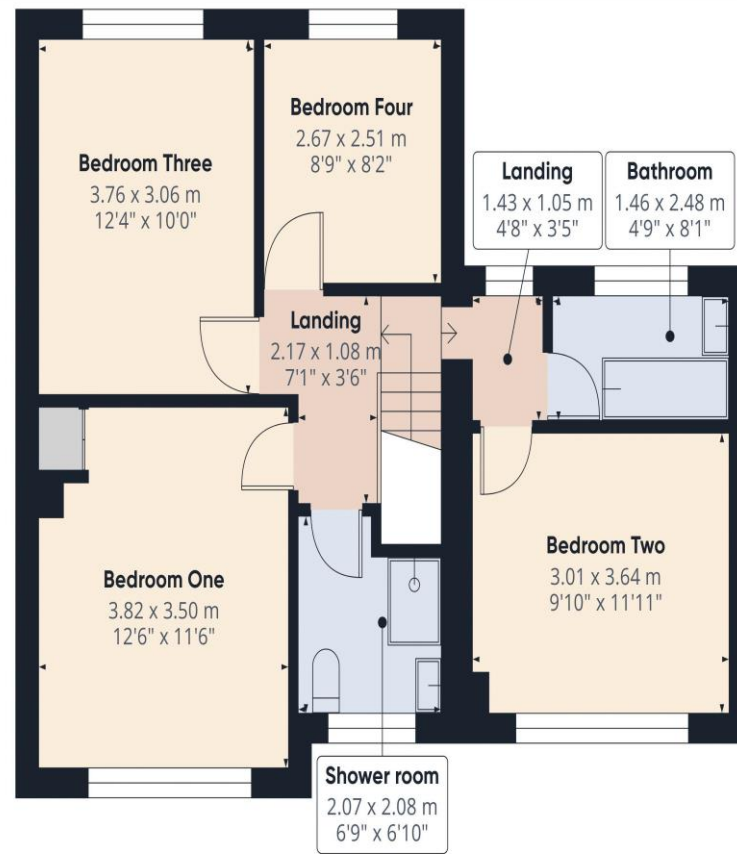


Approximate total area⁽¹⁾
64.8 m²
697 ft²

(1) Excluding balconies and terraces

Calculations reference the RICS IPMS 3C standard. Measurements are approximate and not to scale. This floor plan is intended for illustration only.

GIRAFFE360



Floor 1



Approximate total area⁽¹⁾
53.9 m²
580 ft²

(1) Excluding balconies and terraces

Calculations reference the RICS IPMS 3C standard. Measurements are approximate and not to scale. This floor plan is intended for illustration only.

GIRAFFE360

Head Office
TG Sales & Lettings
48 Stroud Road
Gloucester
Gloucestershire
GL1 5AJ
Tel: 01452 311776
Email: info@tgres.co.uk
Website: www.tgres.co.uk



Score	Energy rating	Current	Potential
92+	A		94 A
81-91	B	90 B	
69-80	C		
55-68	D		
39-54	E		
21-38	F		
1-20	G		

T G Sales & Lettings and any parties they are acting for hereby give you notice that: These details are for guidance only and cannot guarantee the accuracy of any description, dimension, condition or any required permission for occupation and use. It is not company policy to test any services or appliances in properties offered for sale and these should be verified by the purchaser's solicitors. T G Sales & Lettings will not be liable for any loss arising from the use of these details. No responsibility is taken for any errors, omissions or misstatements within these particulars. It should not be assumed that the property has all the necessary planning, building regulation or other consents. These particulars do not form any part of any offer or contract and must not be relied upon as statements or representations of fact. Buyers are advised to seek advice from their legal representation. T G Sales & Lettings is a limited liability partnership registered in England and Wales. Registered Number: 9763381 Registered Office: 48 Stroud Road, Gloucester, Gloucestershire, GL1 5AJ.