



6 Bradman House Abercorn Place, London, NW8 9XY

£3,000 Per month

 2  2  1  C


DISTRICTS

This split-level two double bedroom apartment is situated within a purpose-built block in the desirable St John's Wood area, just a short walk from Little Venice and Warwick Avenue (Bakerloo Line). The property features a spacious reception room with parquet wood flooring and a balcony, a large fully fitted eat-in kitchen, two double bedrooms with fitted wardrobes, a stylish bathroom, and a convenient guest WC. *Photos have been digitally dressed for example purposes.



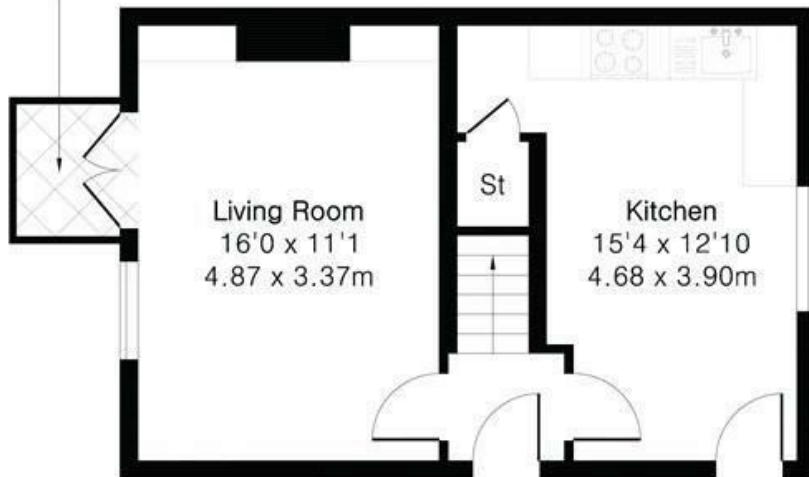


Approximate Gross Internal Area 772 sq ft - 72 sq m

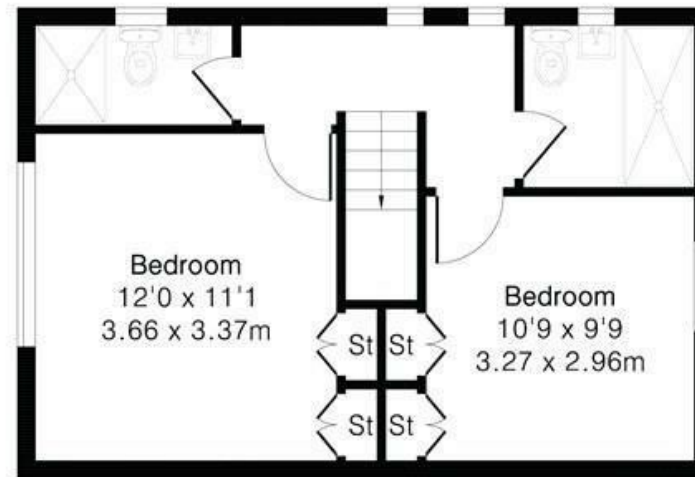
Ground Floor Area 386 sq ft – 36 sq m

First Floor Area 386 sq ft – 36 sq m

Balcony
4'10 x 3'10
1.48 x 1.16m




Ground Floor



First Floor



Energy Efficiency Rating		Current	Potential
<i>Very energy efficient - lower running costs</i>			
(92 plus)	A		
(81-91)	B		
(69-80)	C		
(55-68)	D		
(39-54)	E		
(21-38)	F		
(1-20)	G		
<i>Not energy efficient - higher running costs</i>			
		70	80
England & Wales		EU Directive 2002/91/EC 	

These particulars, whilst believed to be accurate are set out as a general outline only for guidance and do not constitute any part of an offer or contract. Intending purchasers should not rely on them as statements of representation of fact, but must satisfy themselves by inspection or otherwise as to their accuracy. No person in this firm's employment has the authority to make or give any representation or warranty in respect of the property.