



Cleeve Park, Chapel Cleeve, Minehead, TA24 6JG

welcome to

66 Cleeve Park, Chapel Cleeve, Minehead

Positioned within this favoured wooded development in Chapel Cleeve, located less than a mile from the seafront at Blue Anchor, is this detached two bedroom chalet bungalow benefitting decking seating area to the front, double glazing, front & rear gardens, off road parking. Viewing is a must!



Double Glazed Front Door

Leading to

Entrance Hall

With fitted carpet, walk in cupboard housing consumer unit, space and plumbing for washing machine with double glazed window to rear.

Lounge/ Dining Room

16' 10" max x 11' 1" max (5.13m max x 3.38m max)
Double glazed sliding patio doors to front leading to decked seating area, exposed floorboards, coving, two night storage heaters, open hatch to kitchen, doors to

Kitchen

8' 2" x 7' 10" (2.49m x 2.39m)
Double glazed window to front, a range of fitted base and wall units, worktop surfaces, inset stainless steel sink unit, integrated oven, inset electric hob, space for undercounter fridge, tiled splashbacks, breakfast bar.

Bedroom One

8' 4" x 7' 11" (2.54m x 2.41m)
Double glazed window to front, fitted carpet, wall light point, coving.

Bedroom Two

8' 7" x 8' 4" (2.62m x 2.54m)
Double glazed window to rear, fitted carpet, coving, wall light point.

Bathroom

Double glazed window to rear, a fitted suite comprising pedestal wash hand basin, low level WC, panelled bath with shower unit over, tiled surrounds, vinyl flooring, built in airing cupboard, wall mounted electric heater.

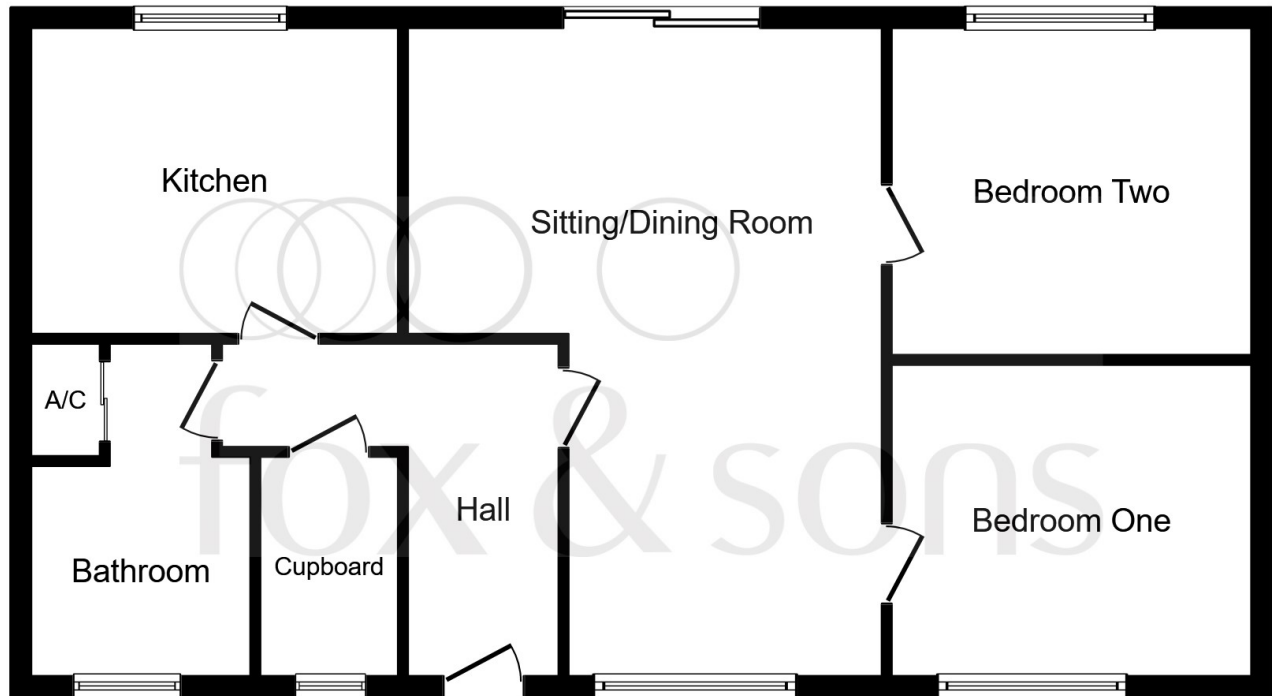
Outside

Approached via a gravelled driveway with fenced and hedge borders leading to a paved patio area with path leading to rear garden, outside light, steps leading to a decked seating area immediately off the lounge/dining room. There is a gravelled area with hedge boundary providing a degree of privacy, pathway leads to rear garden.

To the rear is a good size enclosed garden with paved patio immediately to the rear of the property with timber garden shed, outside water and power points, gates to either side leading to front, a timber arch leads to a lawn area bordered by hedging and fencing.

Location

Cleeve Park is a tranquil woodland park development suitable for full time occupiers or as holiday homes and is situated approximately half a mile from the sea front at Blue Anchor, two and a half miles from the village of Carhampton and approximately seven miles from the coastal resort of Minehead with shopping, banking and recreational facilities. The county town of Taunton is approximately nineteen miles to the east with main line rail connections and access to the motorway network via junction 25 of the M5. For those who enjoy exploring the countryside, the Exmoor, Quantock and Brendon hills and many other beauty spots are all close at hand.



Floor Plan

This floor plan is for illustrative purposes only. It is not drawn to scale. Any measurements, floor areas (including any total floor area), openings and orientation are approximate. No details are guaranteed, they cannot be relied upon for any purpose and they do not form part of any agreement. No liability is taken for any error, omission or misstatement. A party must rely upon its own inspection(s). Plan produced for Fox & Sons Powered by www.focalagent.com



view this property online fox-and-sons.co.uk/Property/MIH107457



welcome to

66 Cleeve Park, Chapel Cleeve, Minehead

- Favoured Woodland Setting
- Detached Chalet - Two Bedroom
- Sitting Room/Dining Room - Kitchen & Bathroom
- Double Glazing - Decked Seating Area
- Front & Rear Gardens - Off Road Parking

Tenure: Freehold EPC Rating: Exempt
Council Tax Band: Deleted

£189,950



Please note the marker reflects the
postcode not the actual property

view this property online fox-and-sons.co.uk/Property/MIH107457



Property Ref:
MIH107457 - 0004

1. MONEY LAUNDERING REGULATIONS Intending purchasers will be asked to produce identification documentation at a later stage and we would ask for your co-operation in order that there is no delay in agreeing the sale. 2. These particulars do not constitute part or all of an offer or contract. 3. The measurements indicated are supplied for guidance only and as such must be considered incorrect. Potential buyers are advised to recheck measurements before committing to any expense. 4. We have not tested any apparatus, equipment, fixtures or services and it is in the buyers interest to check the working condition of any appliances. 5. Where an EPC, or a Home Report (Scotland only) is held for this property, it is available for inspection at the branch by appointment. If you require a printed version of a Home Report, you will need to pay a reasonable production charge reflecting printing and other costs. 6. We are not able to offer an opinion either written or verbal on the content of these reports and this must be obtained from your legal representative. 7. Whilst we take care in preparing these reports, a buyer should ensure that his/her legal representative confirms as soon as possible all matters relating to title including the extent and boundaries of the property and other important matters before exchange of contracts.


fox & sons



01643 702281



minehead@fox-and-sons.co.uk



13 The Parade, MINEHEAD, Somerset, TA24
5NL



fox-and-sons.co.uk