



BEAUFORT GREEN

Lindrop Street, SW6

£435,000



Set across the upper floors of a converted period building, this one-bedroom apartment brings together a bright split-level layout, a soft contemporary finish and a private roof terrace in Sands End.

The apartment extends to approximately 581 sq ft, including eaves storage, and has been arranged to make the most of its top-floor position. The kitchen and reception room forms the heart of the home, with pale timber flooring, a modern fitted kitchen, space to dine and good natural light from both sash-style windows and roof glazing.

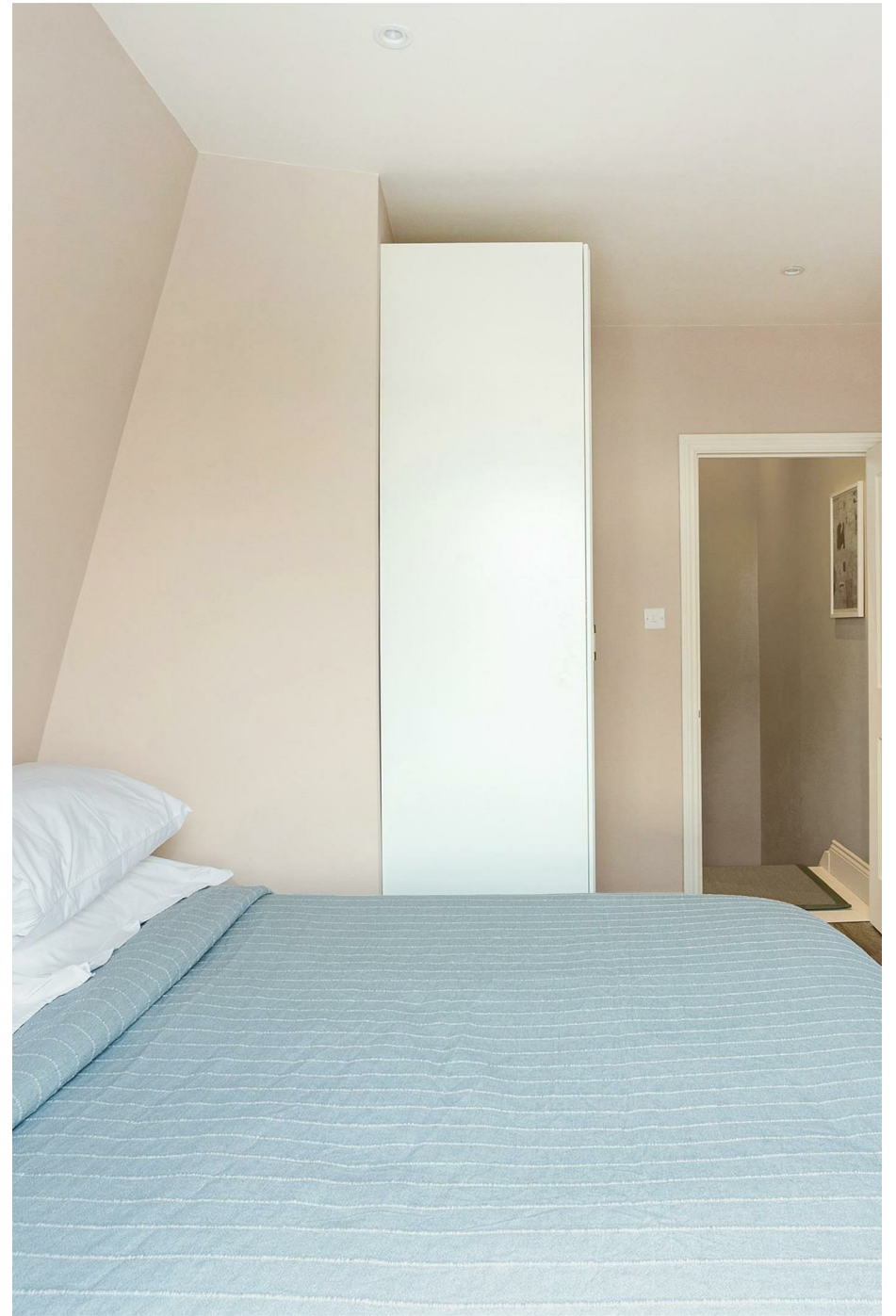
The double bedroom sits separately from the main living space, creating a quieter sleeping area with fitted storage and direct access out to the private terrace. This is a standout feature of the apartment, offering a generous outdoor setting with rooftop views and space for seating, dining or entertaining.

A modern bathroom, useful eaves storage and a well-balanced split-level layout complete the accommodation.

Stephendale Road is positioned within Sands End, close to the River Thames, Imperial Wharf and the area's growing selection of cafés, restaurants and local amenities. Fulham Broadway and Parsons Green are also within easy reach, offering excellent transport connections across London.





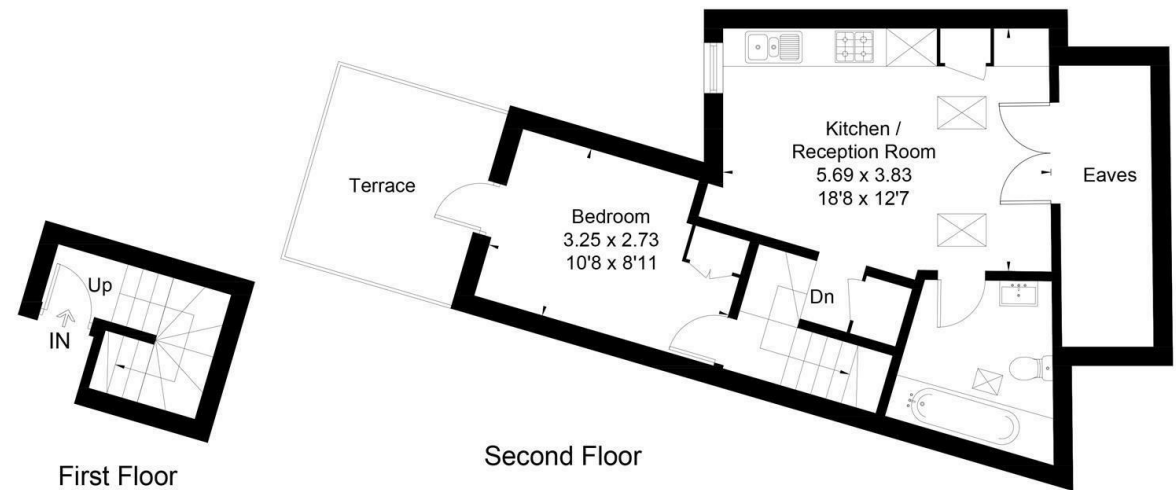


BEAUFORT GREEN



BEAUFORT GREEN

Approximate Floor Area = 54 sq m / 581 sq ft (Including Eaves)



At a Glance.

- One-bedroom apartment
- Top floor of a converted period building
- Approximately 581 sq ft including eaves
- Bright open-plan kitchen and reception room
- Double bedroom with terrace access
- Private roof terrace with rooftop views



This floor plan has been drawn in accordance with RICS Property Measurement 2nd edition.
All measurements, including the floor area, are approximate and for illustrative purposes only. @fourwalls-group.com #77276

BEAUFORT GREEN

02074594100

charlie@beaufortgreen.co.uk

263 New Kings Road
London
SW16 1DB