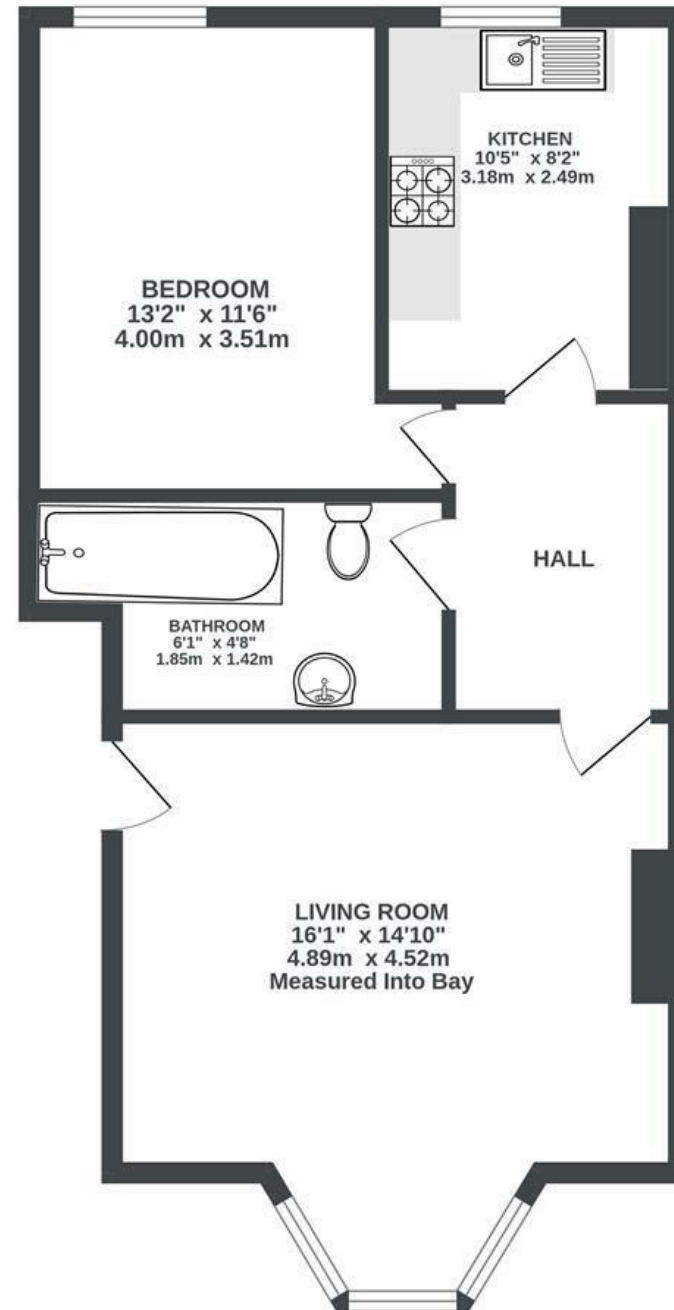


# Coronation Road

## SOUTHVILLE

APPROXIMATE FLOOR AREA  
50 SQM / 539 SQFT



**Boardwalk**

# Coronation Road

SOUTHVILLE, BRISTOL



£250,000



1 Bedrooms



BS3 1AT



1 Bathrooms

*"I love my home because it's perfectly located close to the harbour, near great restaurants, and everything else I could need. It's a spacious one bedroom with plenty of room, cosy and warm in winter yet bright and airy in summer. It's been the perfect first home for me, and I've loved that it's big enough for my partner to move in comfortably."*

