



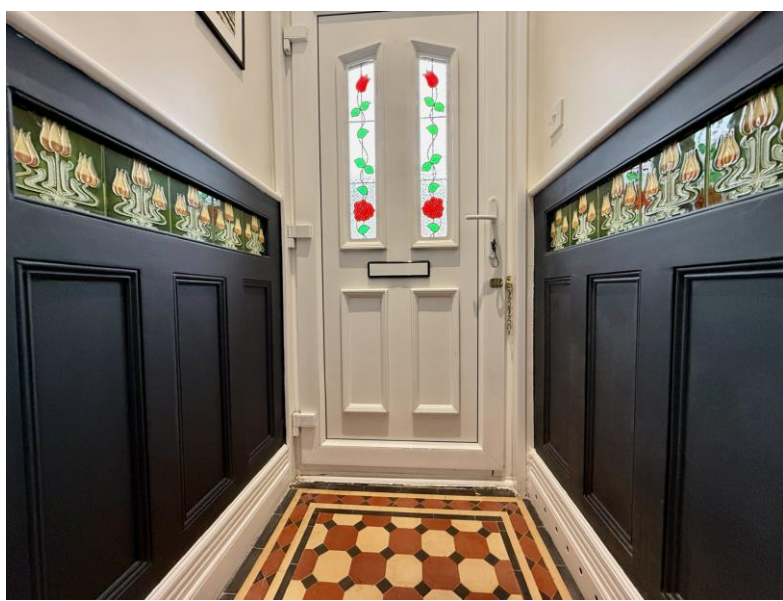
Falcon

01752 600444

25 Thornbury Park Avenue

Peeverell, Plymouth, PL3 4NJ

Guide Price £300,000 - £310,000





In Brief

Beautifully Modernised Family Home with Character in a Prime Location, lovely garden.

Reception Rooms	Fabulous living room with separate dining room	Parking	On street parking
Bedrooms	3 bedrooms (2 doubles and a single)	Council Tax	C
Heating	Gas central heating		
Area	980 Sq ft		
Tenure	Freehold		

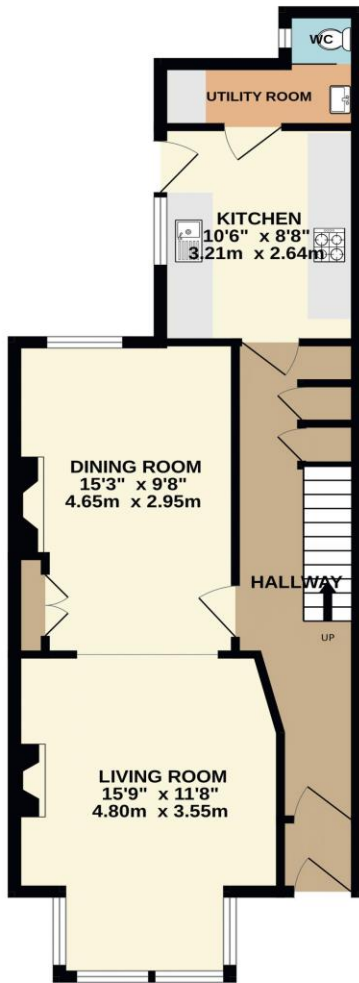
Description

Situated in a highly sought-after residential area, this beautifully presented three-bedroom terraced home has been comprehensively upgraded and modernised throughout, creating a stylish blend of contemporary living and period charm. The property retains many character features, including an impressive staircase with a carved wooden newel post, traditional spindles, and handrail. The bright and welcoming living room benefits from a bay window and a stylish living flame gas fire, creating a wonderful focal point. An opening leads through to a separate dining room, ideal for family meals and entertaining. The contemporary fitted kitchen offers an attractive range of units and integrated appliances, including a dishwasher, fridge freezer, oven, and hob. Beyond the kitchen is a useful utility area with plumbing for a washing machine and wash hand basin, with a sliding door leading to a convenient downstairs WC. On the first floor, a modern shower room is located on the half landing, while the main landing provides access to two generous double bedrooms and a third bedroom, ideal as a nursery, home office, or study. Further benefits include gas central heating, uPVC double glazing, and a programme of recent improvements including a new kitchen, shower room, downstairs WC, replastering throughout, new flooring, and replacement internal doors. Outside to the rear there is a lovely sunny garden that has an area of artificial grass plus a patio seating area all enclosed by original walling, perfect for all the family to enjoy and outside dining. Additionally, the potential for off road parking facilitated by a gate at the rear. Perfectly positioned within walking distance of Central Park, the Plymouth Life Centre, and the highly regarded Hyde Park Infants' School, this is an exceptional family home in a prime location.

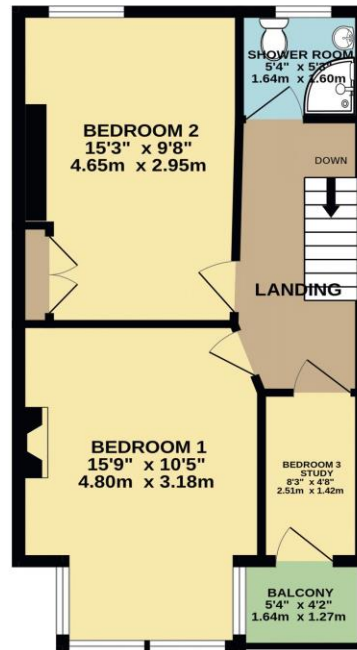
Need A Mortgage?

Floor Plans

GROUND FLOOR
552 sq.ft. (51.3 sq.m.) approx.



1ST FLOOR
427 sq.ft. (39.7 sq.m.) approx.



TOTAL FLOOR AREA : 980 sq.ft. (91.0 sq.m.) approx.
Made with Metropix ©2026





We have not tested any apparatus, equipment, fixtures and fittings or services and so cannot verify that they are connected, in working order or fit for the purpose. Neither have we had sight of the legal documents to verify the Freehold or Leasehold status of any property; or sight of any consents, including Planning Permissions, building Regulations and Breaches of Covenants that may be required for alterations to the property. A buyer is advised to obtain verification from their Solicitor and/or Surveyor. Items shown in photographs are NOT included unless specifically mentioned within the Sales Particulars. Any floor plans on these details are not drawn to scale and are intended for guidance only

Falcon Property is an Introducer to Bradleys Financial Management Ltd. They are appointed representatives of Sesame Ltd who are authorised and regulated by the Financial Services Authority. Bradleys do not charge for mortgage advice, however a fee paying option is available. Typical fee is £195. Bradleys Financial Management: 16 Mannamead Road, Mutley, Plymouth, PL4 7AA

Your home may be repossessed if you do not keep up repayments on your mortgage.

