

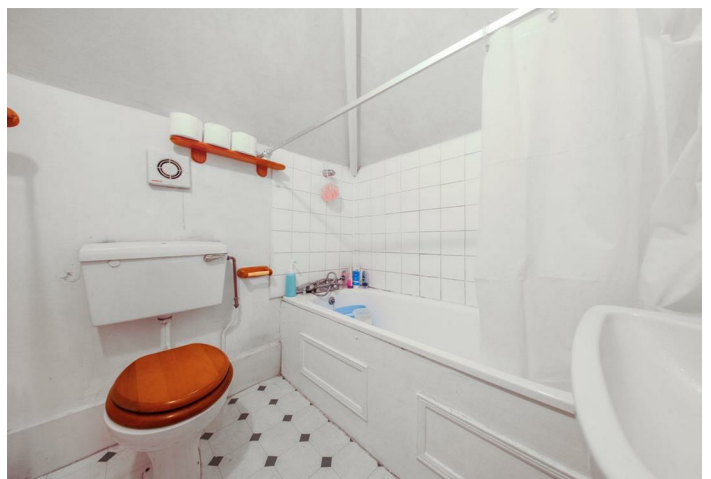


Finchley Road, NW2

£1,500

AVAILABLE TO LET - is this spacious one bedroom flat, set on the Second Floor of a period conversion, situated on Finchley Road. The property comprises a bright open plan kitchen/reception/dining room and a double bedroom with fitted wardrobes which is serviced by a three piece bathroom. The property is situated on a quiet residential street conveniently located close to all amenities of Childs Hill, West Hampstead and Finchley Road. The property is within walking distance to Golders Green Station (Northern-Zone 3).

- Spacious 1 bedroom Second Floor Flat
- Offering 470 sq ft of accommodation
- Open plan kitchen/reception room
- Transport: Golders Green (Northern-Zone 3)
- Deposit: £1,615
- COUNCIL: Barnet (C)



020 8450 9377 - 020 8459 1133
rentals@cameronsstiff.co.uk

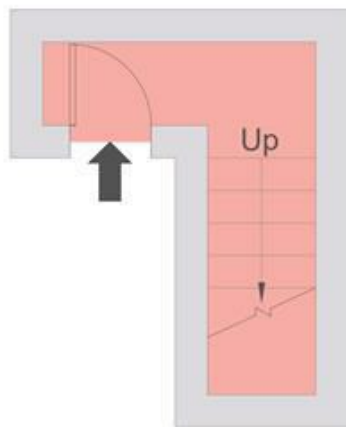
Finchley Road, NW2

Approx Gross Internal Area = 43.75 sq m / 470 sq ft
For identification only - Not to scale

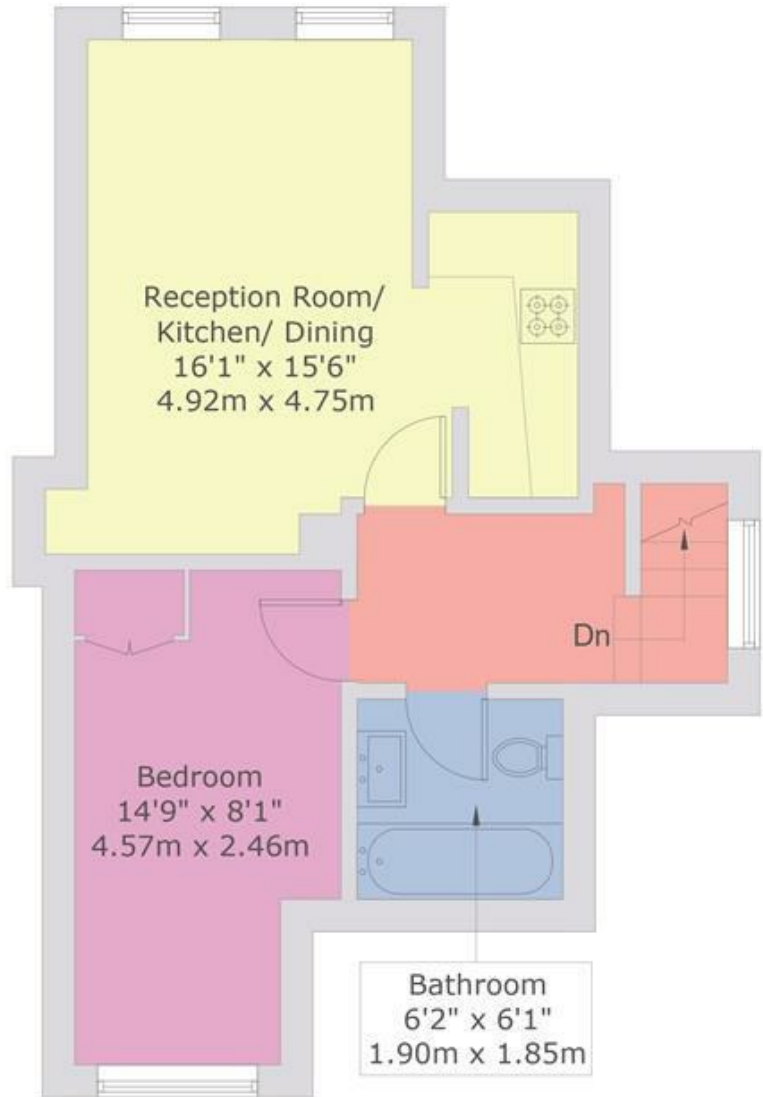


EPC: E

Ref: 18121892



FIRST FLOOR



SECOND FLOOR



This floor plan is produced in accordance with RICS Property Measurement Standards incorporating International Property Measurement Standards (IPMS2 Residential).

Maximum lengths and widths are represented on the floor plan.

If there is any aspect of particular importance, you should carry out or commission your own inspection of the property.

Produced for Cameron Stiff & Co.

Copyright @ BLEUPLAN

