



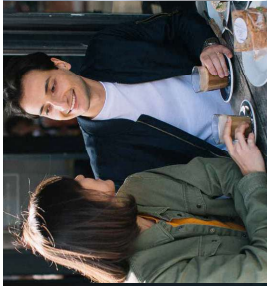
CAMBRIDGE HOUSE

Aylesbury | Buckinghamshire

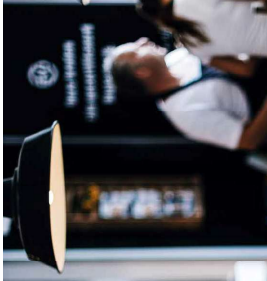
A modern collection
of 1 and 2 bedroom
apartments.



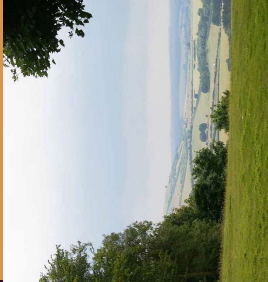
work & play



An exciting collection of one and two bedroom apartments in the town centre of Aylesbury



LIVE YOUR BEST LIFE AT CAMBRIDGE HOUSE



BE WHERE YOU LOVE!

Aylesbury is the county town of Buckinghamshire, situated midway between High Wycombe and Milton Keynes. Surrounded by beautiful countryside, it's also only 26 miles away from Central London.



With a great variety of restaurants, cafes and bistros, there is something to please every taste. The pubs and bars in the town offers a great choice of nightlife and for those looking for a cultural fix there is also the Waterside Theatre and arts centre.

Aylesbury is a retail destination. It's three outdoor markets a week are complimented with two shopping centres offering a modern vibe and a bustling high street of well known brands and smaller boutiques.

- 1. Aylesbury Waterside Theatre
- 2. The Craftyard Bar in Aylesbury
- 3. The Rooftop Bar at The Manor



STAYING CONNECTED

Whether you're travelling for work or pleasure, getting around from Sloane House is easy.



Oxford	23 miles
Milton Keynes	20 miles
London	45 miles



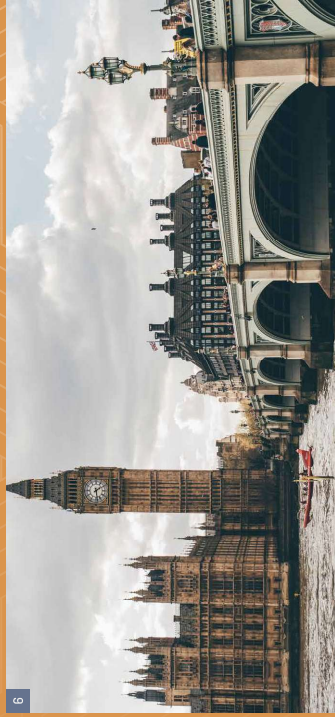
TRAIN from Aylesbury station

London Marylebone	60 mins
High Wycombe	30 mins
Amersham	24 mins

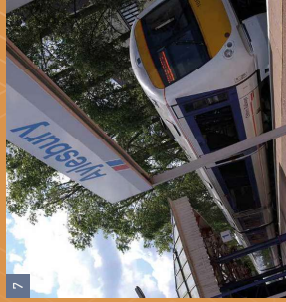


Luton Airport	27 miles
Heathrow Airport	34 miles
Stansted Airport	60 miles

Details by car taken from www.google.co.uk.
Train information provided by National Rail.



6

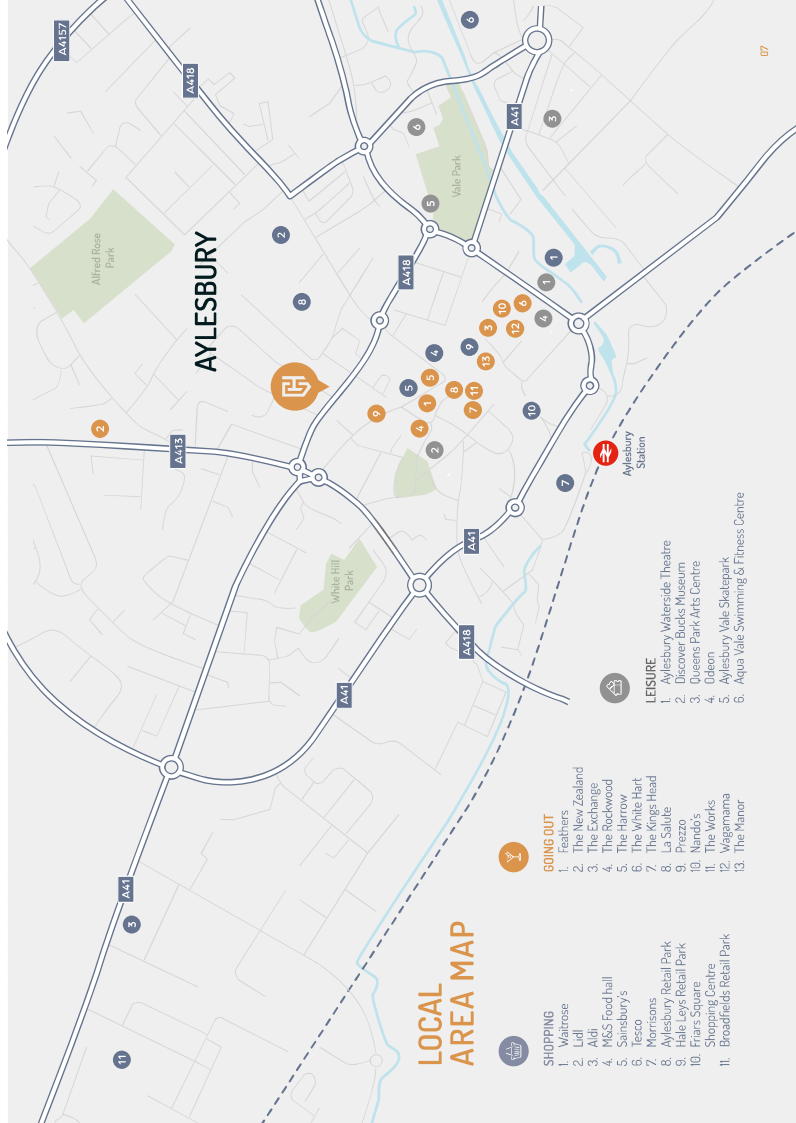


7



8

6. View of Elizabeth Tower from across the Thames.
7. Luton Airport.
8. Luton Airport.



LOCAL AREA MAP



SHOPPING

1. M&S
2. Aldi
3. Lidl
4. M&S Food hall
5. Sainsbury's
6. Tesco
7. Morrisons
8. Aylesbury Retail Park
9. Hale Leys Retail Park
10. Friars Square Shopping Centre
11. Broadfields Retail Park



GOING OUT

1. The New Zealand
2. The Exchange
3. The Rockwood
4. The Harrow
5. The Kings Head
6. La Salute
7. The White Hart
8. La Salute
9. Prezzo
10. Nando's
11. The Works
12. Weigamma
13. The Manor



LEISURE

1. Aylesbury Waterside Theatre
2. Discover Bucks Museum
3. Queens Park Arts Centre
4. Udon
5. Aylesbury Vale Skatepark
6. Aqua Vale Swimming & Fitness Centre



WELCOME TO CAMBRIDGE HOUSE

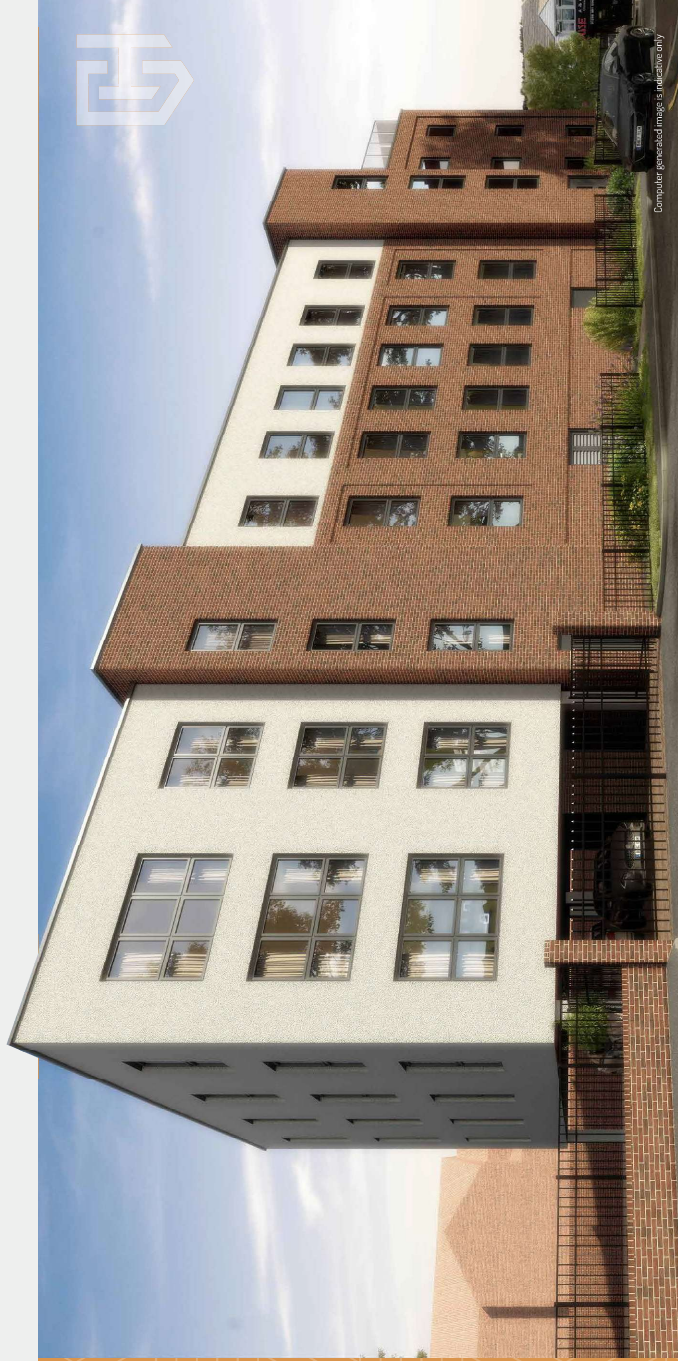
Comprising of just 27 of one and two bedroom apartments, designed with everyday living in mind.

With open plan living and dining areas each apartment has been designed to be light, practical and above all, stylish. Everything is finished to the highest standard with your comfort in mind.

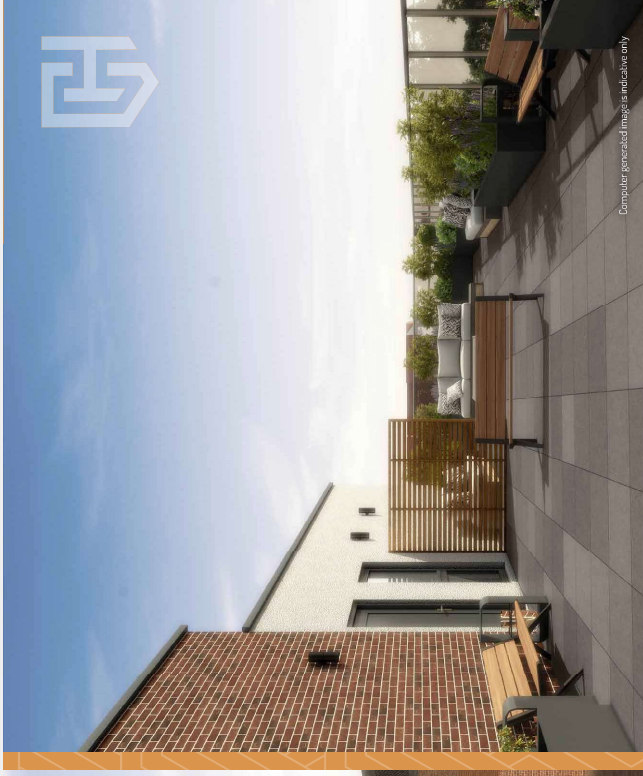
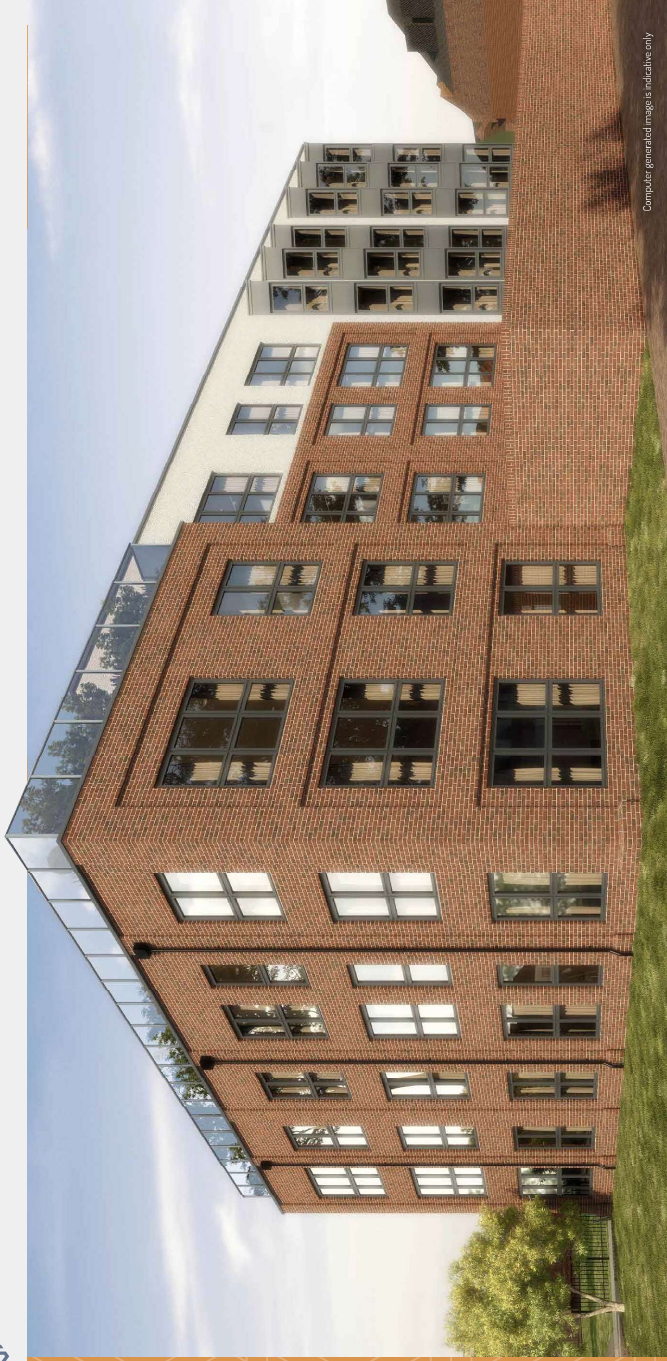
The historical town of Aylesbury has much to offer, whether you're looking for peace and quiet to relax and unwind or a mix of nightlife to enjoy life to the full.

BUILT BY
Oakmont
HOMES

Oakmont Homes is a privately owned property developer and investor, committed to delivering innovative, high specification and contemporary living spaces across London and the South East.



Computer generated image & indicative only



SPECIFICATION & FINISH

KITCHEN

- Contemporary kitchen units
- >> upgrade options available †
- Individually designed layouts
- Integrated fridge/freezer
- Integrated dishwasher
- Branded appliances
- Touch control hob
- Stainless steel multi-function oven
- Electric hob
- Washer/dryer

INTERIOR FINISHES

- Contemporary internal doors with polished chrome door furniture
- Fitted carpets as standard with upgrade options available †
- Built-in wardrobes to Master Bedroom ‡

BATHROOMS

- White semi-pedestal wall mounted basin with polished chrome mixer tap
- White bath with bath filler, stylish feet wall mounted shower head and integrated polished chrome wall mounted triple mixer plate controls ‡
- Glass bath screen to baths where overhead shower provided
- Modern close coupled white toilet
- Polished chrome ladder style heated towel rail to all bathrooms/shower rooms
- Fitted mirror
- Ceramic floor and wall tiling

ELECTRICAL FITTINGS & HOME ENTERTAINMENT

- Recessed LED ceiling downlights throughout
- Television (Sky Q, terrestrial, DAB and FM radio) points to the primary reception room
- Return feed television points to master bedroom
- Wiring to facilitate telephone line to primary reception room
- Single grid switch to all kitchen appliances
- Hyperoptic Fibre Broadband

CAR PARKING

- Car parking options available by agreement - speak to sales agent

OTHER FEATURES

- Two passenger lifts (one in each building)
- Secure bicycle storage
- Third floor communal roof terrace

SAFETY & SECURITY

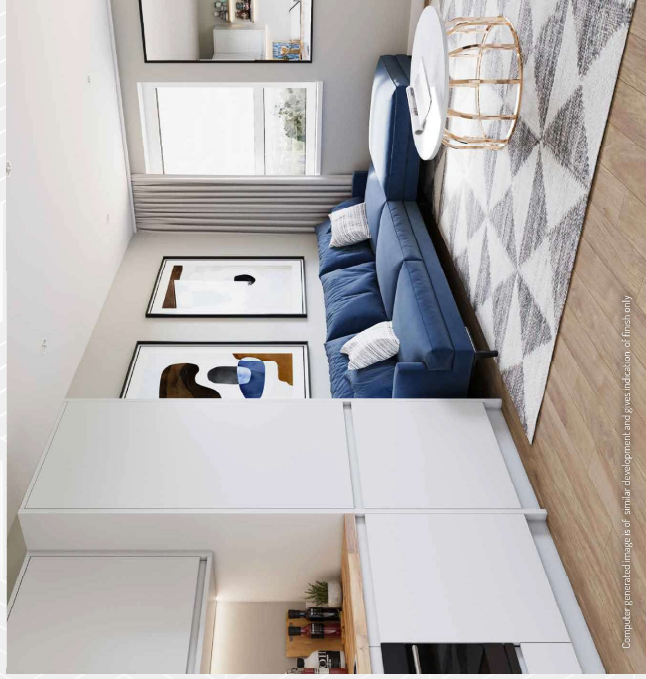
- Private audio/visual door-entry system to all apartments
- Power and telephone points to all apartments for wireless intruder alarm to be fitted at a later date by purchaser
- Multi-point locking, spy hole and security chain to apartment entrance doors
- Mains hardwired smoke detectors and heat detectors.

PEACE-OF-MIND

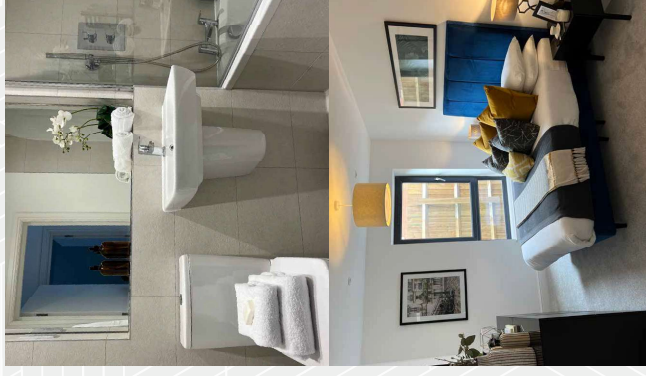
- All apartments benefit from a 10 year build Warranty (CML compliant)

MANAGEMENT COMPANY

A management company will be appointed to administer the effective operation and maintenance of communal facilities for which a service charge will be levied and apportioned to the benefit offered.

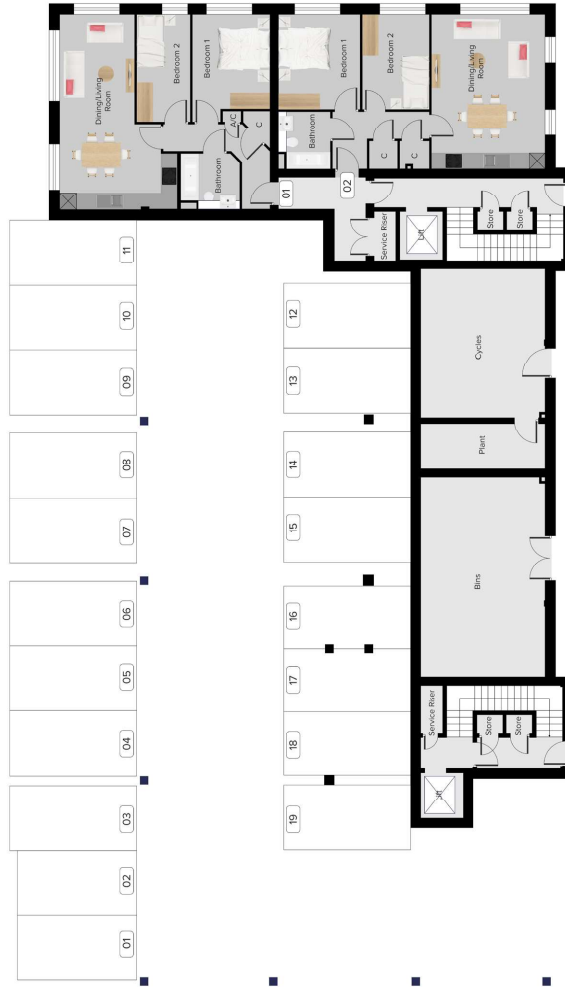


Computer generated images of similar developments and specifications of finish only



† Subject to cut off date.
 ‡ As applicable.
 * Where denoted on floor plan. Please refer to specific apartment floor plan.

GROUND FLOOR

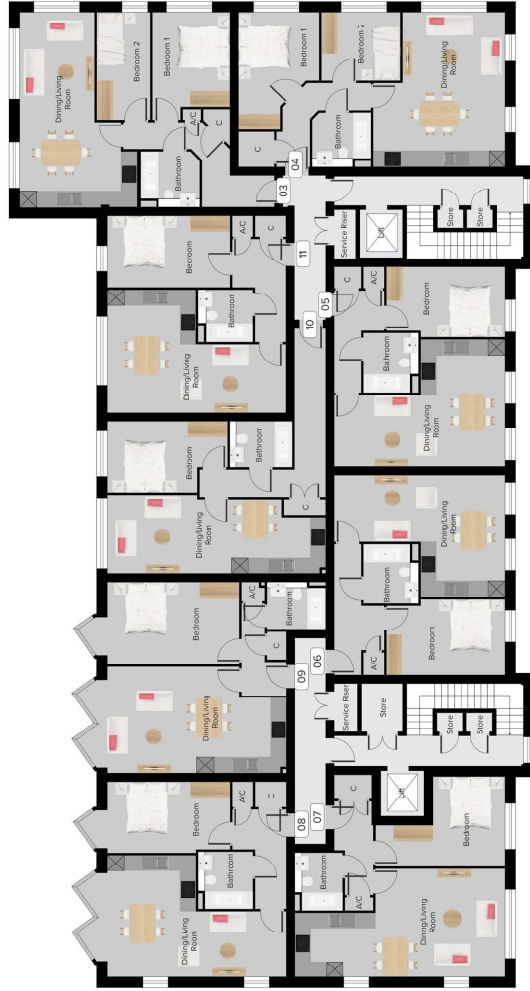


Apartment 01	
Kitchen/Dining/Living	0.00m x 0.00m
Bedroom 1	0.00m x 0.00m
Bedroom 2	0.00m x 0.00m
Bathroom	0.00m x 0.00m

Apartment 02	
Kitchen/Dining/Living	0.00m x 0.00m
Bedroom 1	0.00m x 0.00m
Bedroom 2	0.00m x 0.00m
Bathroom	0.00m x 0.00m

PLEASE NOTE:
 Any furniture shown is not included. All measurements may vary within a tolerance of 5%.
 The dimensions are not intended to be used for carpet sizes, appliance sizes or items of furniture.

FIRST FLOOR



Apartment 03
 Kitchen/Dining/Living
 Bedroom 1
 Bedroom 2
 Bathroom

0.00m x 0.00m
 0.00m x 0.00m
 0.00m x 0.00m
 0.00m x 0.00m

Apartment 07
 Kitchen/Dining/Living
 Bedroom
 Bathroom

0.00m x 0.00m
 0.00m x 0.00m
 0.00m x 0.00m

Apartment 11
 Kitchen/Dining/Living
 Bedroom
 Bathroom

0.00m x 0.00m
 0.00m x 0.00m
 0.00m x 0.00m

Apartment 04
 Kitchen/Dining/Living
 Bedroom 1
 Bedroom 2
 Bathroom

0.00m x 0.00m
 0.00m x 0.00m
 0.00m x 0.00m
 0.00m x 0.00m

Apartment 08
 Kitchen/Dining/Living
 Bedroom
 Bathroom

0.00m x 0.00m
 0.00m x 0.00m
 0.00m x 0.00m

Apartment 05
 Kitchen/Dining/Living
 Bedroom
 Bathroom

0.00m x 0.00m
 0.00m x 0.00m
 0.00m x 0.00m

Apartment 09
 Kitchen/Dining/Living
 Bedroom
 Bathroom

0.00m x 0.00m
 0.00m x 0.00m
 0.00m x 0.00m

Apartment 06
 Kitchen/Dining/Living
 Bedroom
 Bathroom

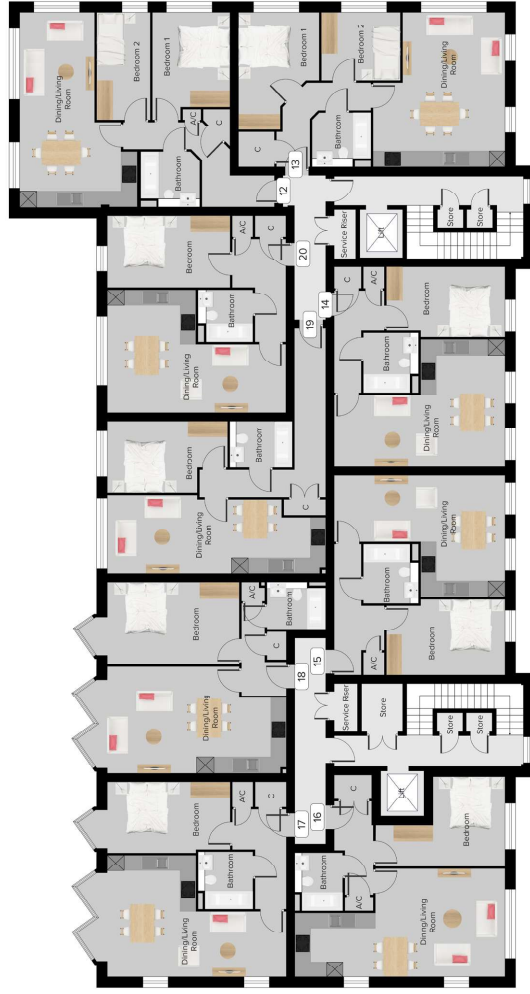
0.00m x 0.00m
 0.00m x 0.00m
 0.00m x 0.00m

Apartment 10
 Kitchen/Dining/Living
 Bedroom
 Bathroom

0.00m x 0.00m
 0.00m x 0.00m
 0.00m x 0.00m

PLEASE NOTE:
 Any furniture shown is not included. All measurements may vary within a tolerance of 5%.
 The dimensions are not intended to be used for carpet sizes, appliance sizes or items of furniture.

SECOND FLOOR



Apartment 12
 Kitchen/Dining/Living
 Bedroom 1
 Bedroom 2
 Bathroom

0.00m x 0.00m
 0.00m x 0.00m
 0.00m x 0.00m
 0.00m x 0.00m

Apartment 16
 Kitchen/Dining/Living
 Bedroom
 Bathroom

0.00m x 0.00m
 0.00m x 0.00m
 0.00m x 0.00m

Apartment 20
 Kitchen/Dining/Living
 Bedroom
 Bathroom

0.00m x 0.00m
 0.00m x 0.00m
 0.00m x 0.00m

Apartment 13
 Kitchen/Dining/Living
 Bedroom 1
 Bedroom 2
 Bathroom

0.00m x 0.00m
 0.00m x 0.00m
 0.00m x 0.00m
 0.00m x 0.00m

Apartment 17
 Kitchen/Dining/Living
 Bedroom
 Bathroom

0.00m x 0.00m
 0.00m x 0.00m
 0.00m x 0.00m

Apartment 14
 Kitchen/Dining/Living
 Bedroom
 Bathroom

0.00m x 0.00m
 0.00m x 0.00m
 0.00m x 0.00m

Apartment 18
 Kitchen/Dining/Living
 Bedroom
 Bathroom

0.00m x 0.00m
 0.00m x 0.00m
 0.00m x 0.00m

Apartment 15
 Kitchen/Dining/Living
 Bedroom
 Bathroom

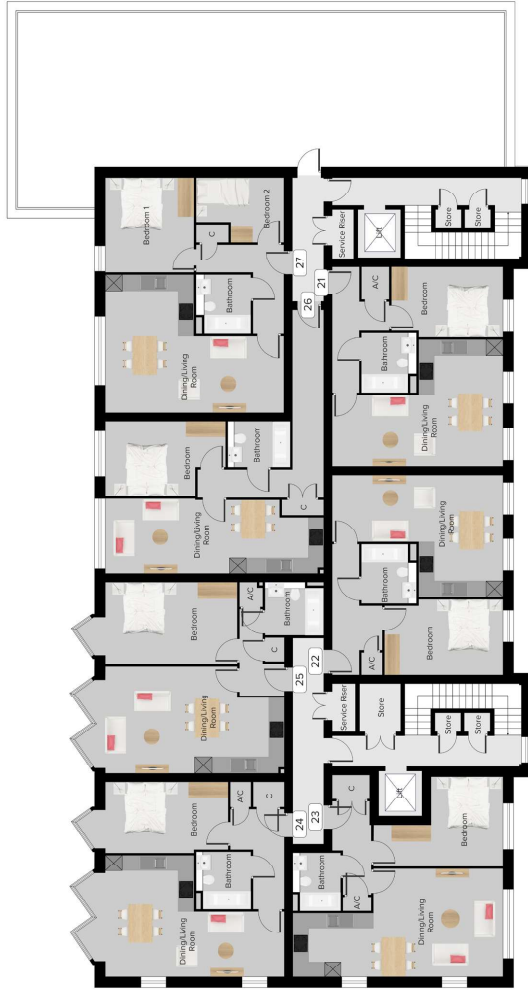
0.00m x 0.00m
 0.00m x 0.00m
 0.00m x 0.00m

Apartment 19
 Kitchen/Dining/Living
 Bedroom
 Bathroom

0.00m x 0.00m
 0.00m x 0.00m
 0.00m x 0.00m

PLEASE NOTE:
 Any furniture shown is not included. All measurements may vary within a tolerance of 5%.
 The dimensions are not intended to be used for carpet sizes, appliance sizes or items of furniture.

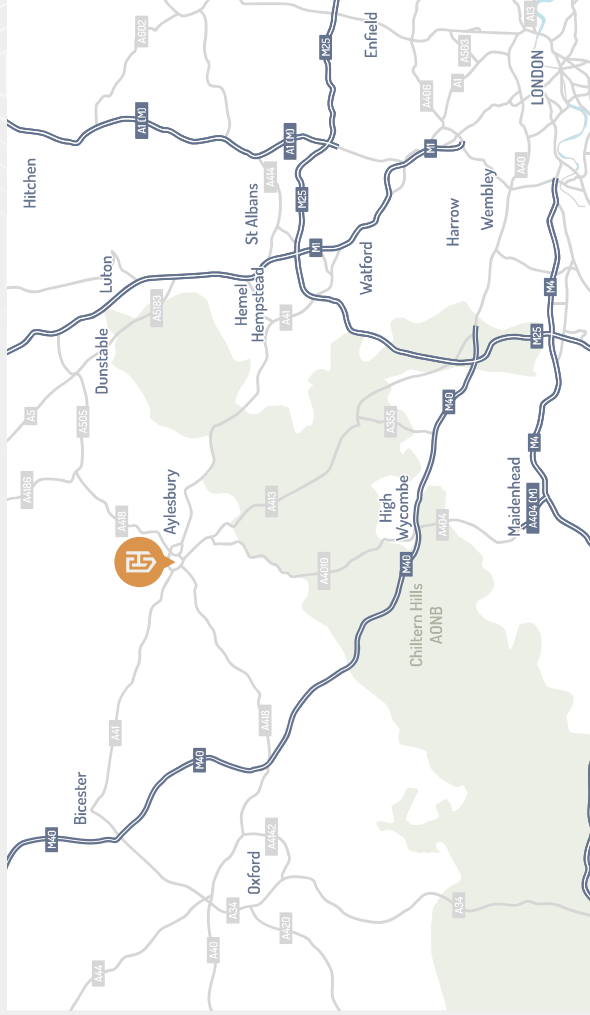
THIRD FLOOR



Apartment 21 Kitchen/Dining/Living Bedroom 1 Bedroom 2 Bathroom	0.00m x 0.00m 0.00m x 0.00m 0.00m x 0.00m 0.00m x 0.00m	Apartment 25 Kitchen/Dining/Living Bedroom Bathroom	0.00m x 0.00m 0.00m x 0.00m 0.00m x 0.00m
Apartment 22 Kitchen/Dining/Living Bedroom Bathroom	0.00m x 0.00m 0.00m x 0.00m 0.00m x 0.00m	Apartment 26 Kitchen/Dining/Living Bedroom Bathroom	0.00m x 0.00m 0.00m x 0.00m 0.00m x 0.00m
Apartment 23 Kitchen/Dining/Living Bedroom Bathroom	0.00m x 0.00m 0.00m x 0.00m 0.00m x 0.00m	Apartment 27 Kitchen/Dining/Living Bedroom 1 Bedroom 2 Bathroom	0.00m x 0.00m 0.00m x 0.00m 0.00m x 0.00m 0.00m x 0.00m
Apartment 24 Kitchen/Dining/Living Bedroom Bathroom	0.00m x 0.00m 0.00m x 0.00m 0.00m x 0.00m		

PLEASE NOTE:
 Any furniture shown is not included. All measurements may vary within a tolerance of 5%.
 The dimensions are not intended to be used for carpet sizes, appliance sizes or items of furniture.

A GREAT LOCATION



LIVE YOUR BEST LIFE AT CAMBRIDGE HOUSE





CAMBRIDGE
HOUSE



Connells

FOR SALES ENQUIRIES CALL

01296 395 111

DISCLAIMER: This brochure and the information contained within it does not form part of any contract, and while reasonable effort has been made to ensure accuracy, this cannot be guaranteed. Apartment designs and layouts are indicative only and may change. Computer-generated images and photographs are indicative only. Any furniture shown is not included. The specification may be subject to change in accordance with permitted variances under the apartment sales contract. Dimensions shown in any text or plan are approximate sizes only and actual sizes may be different once constructed. Building names used in marketing materials may not necessarily form part of the approved postal address. All sales remain subject to contract. Neither the agents nor any person in their employment has any authority to make or give any representation warranty or guarantee in respect of or in relation to the development.