



Priorscombe House Corfe, Taunton TA3 7DF



A rare and wonderfully private 4 double bed roomed detached country home, now in need of updating, occupying an exceptional setting within approximately 23 acres of gardens, paddocks and beautiful mature woodland in the heart of the Blackdown Hills National Landscape with double garage and ample driveway parking.





Features

- Entrance Hall
- Living / Dining Room with inglenook fireplace and woodburner
- Kitchen / Breakfast Room with oil-fired Aga and separate oven
- Utility Room with door to garden
- Storage
- Sun Room with door to garden
- Study / Bedroom 5
- Cloakroom
- Master Bedroom with Ensuite Shower Room
- Study Area
- 3 further double Bedrooms with fitted wardrobes
- Family Bathroom

- Gardens, paddocks and beautiful mature woodland extending to 23 acres. The paddocks and woodlands are home to a variety of trees including Ash, Oak, Alder, Field Maple, Hazel and Poplar trees

- Summer House
- Outside Store
- Double Garage and ample driveway parking
- Conservatory

- Oil fired central heating
- Double glazing
- Private drainage

- Council tax band G

- What3words:
[///wobbles.interacts.pints](https://www.what3words.com/)







Priorscombe House is situated in the village of Corfe at the foot of the Blackdown Hills National Landscape. The renowned Taunton & Pickering Golf Course is close by and there are excellent opportunities for walking and riding with an abundance of footpaths and bridleways.

Taunton, the County Town of Somerset, is situated within 4.2 miles. The town is a bustling, forward-looking town with excellent amenities, a good selection of independent and high street shops, distinctive restaurants, cafés, a wealth of history and sporting facilities including the County Cricket Ground.

Taunton benefits from a main line railway station linking to London Paddington in less than 2 hours and excellent communications for the M5 motorway at junction 25, situated on the eastern side of the town.

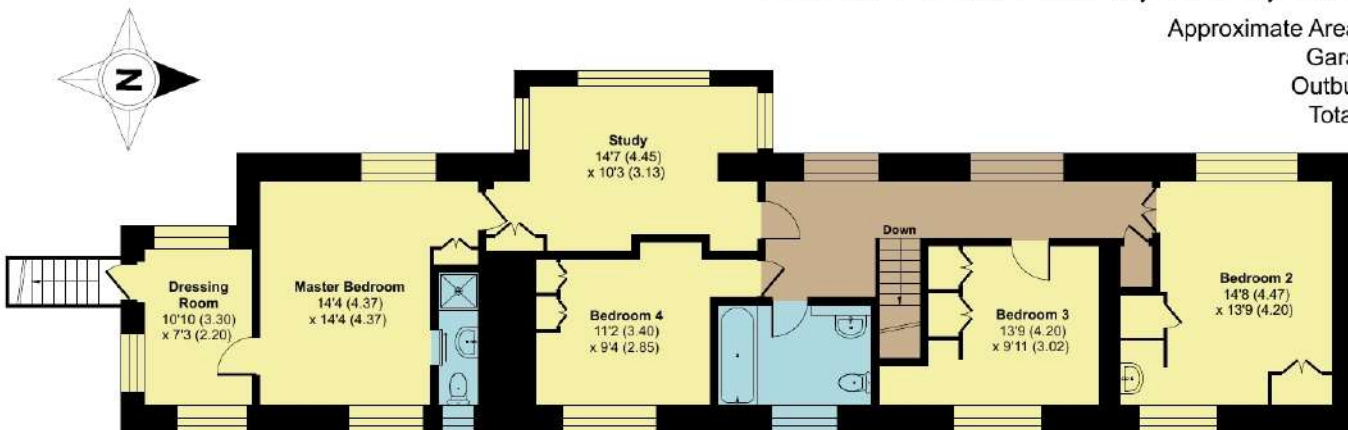
Taunton also offers a good selection of both state and independent schools including Castle School, Taunton School, King's and Queen's Colleges and Richard Huish Sixth Form College.



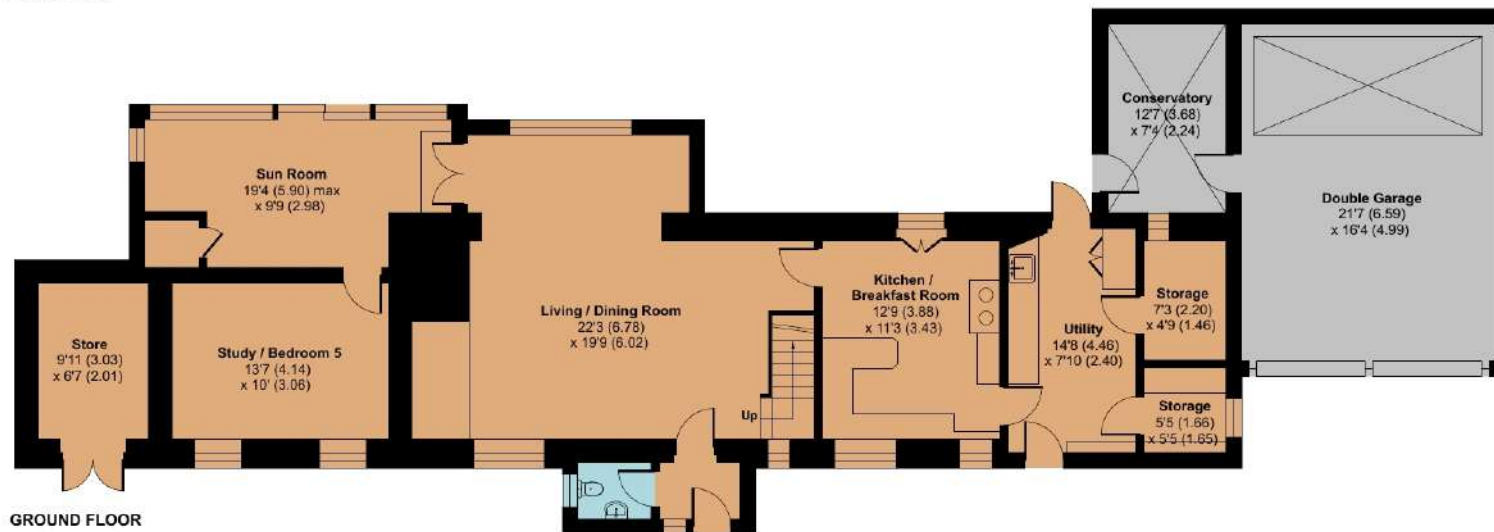
Priorscombe House, Corfe, Taunton, TA3 7DF

Approximate Area = 2333 sq ft / 216.7 sq m
 Garage = 457 sq ft / 42.4 sq m
 Outbuilding = 71 sq ft / 6.5 sq m
 Total = 2861 sq ft / 265.6 sq m

For identification only - Not to scale



FIRST FLOOR



GROUND FLOOR

Floor plan produced in accordance with RICS Property Measurement 2nd Edition, incorporating International Property Measurement Standards (IPMS2 Residential). © nichecom 2025. Produced for Robert Cooney. REF: 1469556



Viewing strictly through the selling agents:

Robert Cooney

Corporation Street, Taunton, Somerset TA1 4AW

Telephone 01823 230 230

E-mail taunton@robertcooney.co.uk

Website robertcooney.co.uk

robert cooney

For clarification, we wish to inform prospective purchasers that: these particulars are set out as a general outline only for the guidance of intended purchasers, and do not constitute, nor constitute part of, an offer or contract; all descriptions, dimensions, references to condition and necessary permission for use and occupation, and other details, are given without responsibility and any intending purchasers should not rely on them as statements or representation of fact, but must satisfy themselves by inspection or otherwise as to the correctness of each of them; no person in the employment of Robert Cooney has any authority to make or give any representation or warranty whatever in relation to this property; we have not carried out a detailed survey nor tested the services, appliances and specific fittings.

