

shepherds

A better home
moving experience



52 Queens Road

Hertford, SG13 8BB

Price Guide £1,500,000



52 Queens Road

Hertford, SG13 8BB

SOLD BY SHEPHERDS - Chain Free - An exceptional and highly distinctive period residence, set on one of Hertford's most prestigious and sought-after roads, Queens Road.

This elegant residence is rich in both charm and local history, having once been home to WWI pilot Brian Baker, adding a unique and distinguished heritage to an already remarkable property.

This striking home is instantly recognisable, showcasing attractive architectural detailing and a commanding presence, while internally offering a wealth of original character including fireplaces, high ceilings and beautifully proportioned rooms. Having remained in the same ownership for almost 40 years, it presents a rare opportunity to acquire a home of both substance and heritage.

The accommodation is both generous and versatile, centred around an impressive reception hall that sets the tone for the rest of the house. There are two elegant reception rooms, ideal for entertaining and family living, alongside a well-appointed kitchen/breakfast room, separate utility and additional study.

Upstairs, four well-proportioned double bedrooms are complemented by three en-suite facilities and a family bathroom, providing excellent accommodation for growing families.

Externally, the property truly excels. The mature rear garden extends to approximately 200ft and offers a high degree of privacy, with established trees, lawn and seating areas creating a wonderful outdoor setting. A range of outbuildings, including a studio/gym and workshop, provide excellent flexibility for home working, leisure or further potential.

To the front, a generous driveway provides ample off-street parking.

There is also clear scope to further enhance the property, with previous plans drawn to convert the loft into additional bedrooms and bathrooms (subject to the necessary consents).

A rare opportunity to secure a landmark home of character, scale and potential, in one of Hertford's finest locations.

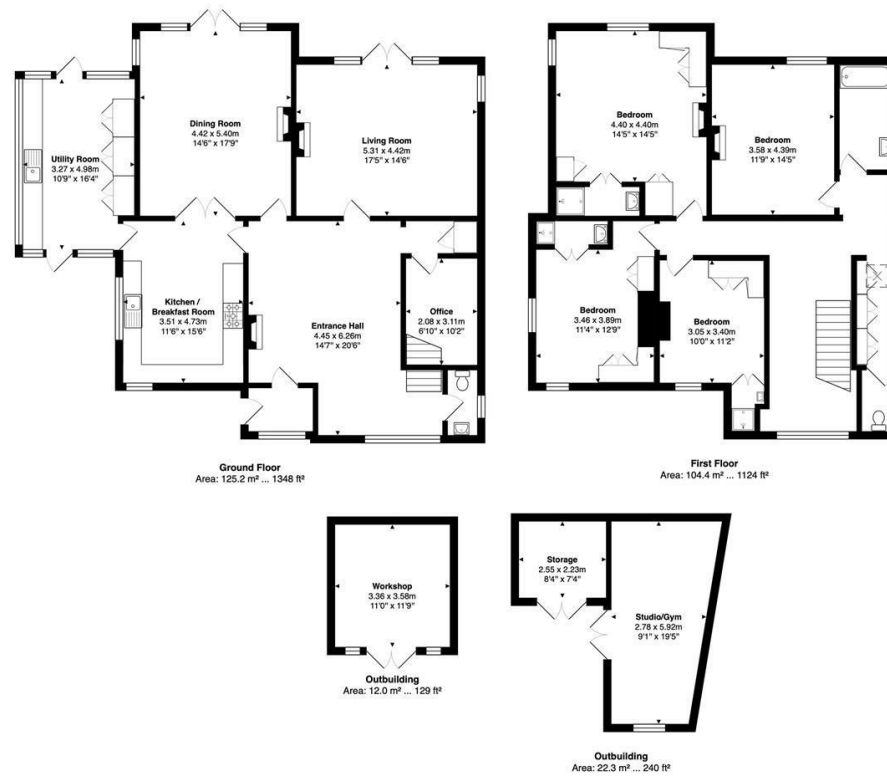




- Prime Queens Road location – one of Hertford's most prestigious and sought-after addresses
- Elegant and substantial period home offering over 2,800 sq ft of accommodation
- Four generous double bedrooms, three with en-suite facilities
- Two beautifully proportioned reception rooms plus separate study
- Wealth of original character including fireplaces, high ceilings and period detailing
- Stunning 200ft mature rear garden with excellent privacy and established planting
- Attractive and distinctive façade creating strong kerb appeal
- Versatile outbuildings including studio/gym, workshop and additional storage
- Ample driveway parking to the front of the property
- Excellent scope to extend into the loft (STPP) to create further bedrooms and bathrooms



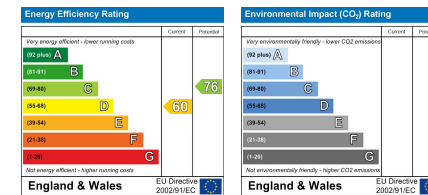
Floor Plan



Viewing

Please contact Shepherds of Hertford on 01992 551955 if you wish to arrange a viewing appointment for this property or require further information.

Energy Performance Graph



These particulars, whilst believed to be accurate are set out as a general outline only for guidance and do not constitute any part of an offer or contract. Intending purchasers should not rely on them as statements of representation of fact, but must satisfy themselves by inspection or otherwise as to their accuracy. No person in this firm's employment has the authority to make or give any representation or warranty in respect of the property.

Riverside House, 6 Millbridge, Hertford, SG14 1PY
Tel: 01992 551955 Email: enquiries@shepherdsfhertford.co.uk