



Old Lain, Harrietsham, Maidstone, Kent, ME17 1AZ
Offers In Excess Of £750,000



**** GUIDE PRICE £750,000 - £775,000 **** A stunning four double bedroom, three bathroom detached bungalow located on a private road in the highly desirable village of Harrietsham. Within a short walk, you'll find a wealth of excellent local amenities, including shops, a welcoming pub, a fantastic primary school, and a nearby train station.

This property boasts impressive kerb appeal, approached via a generously sized sweeping driveway that features a spacious double garage and a beautifully landscaped front garden. Upon entering, you're welcomed by a bright and airy hallway that guides you into a modern, well-appointed open-plan kitchen and dining area with large adjacent utility room. The kitchen/diner seamlessly extends to the expansive patio outside, perfect for entertaining in the summer months.

A spacious yet cosy dual aspect lounge leads into a generous study, further connecting to the principal bedroom which also provides access to the patio and benefits from an en-suite bathroom. There are three additional double bedrooms, along with a separate shower room and bathroom, ensuring flexible living arrangements in excellent move-in condition.

Further advantages of this wonderful home include a brick-built store featuring a pump house and shed. The garden has been thoughtfully designed, featuring a sizeable patio with two seating areas—one of which is covered by an impressive pergola, and a large pond, all of which enjoy a desirable south-facing orientation and offers a high degree of privacy.

Tenure: Freehold. Council Tax Band: E. EPC rating: D.



LOCATION

Situated in the popular village of Harrietsham, which benefits from convenient access to various amenities such as a general store, supermarket, pub, primary school, parish church, doctors surgery, and a London line station. Additionally, the larger village of Lenham is within a distance of approximately 2 miles, offering further amenities. Maidstone, the county town of Kent, is also easily accessible, being approximately 8 miles away.

ACCOMODATION

Entrance Hall

Kitchen / Dining Area

Utility

Sitting Room

Study

Bedroom One

En Suite

Bedroom Two

Bedroom Three

Bedroom Four

Shower Room

Bathroom

EXTERNAL

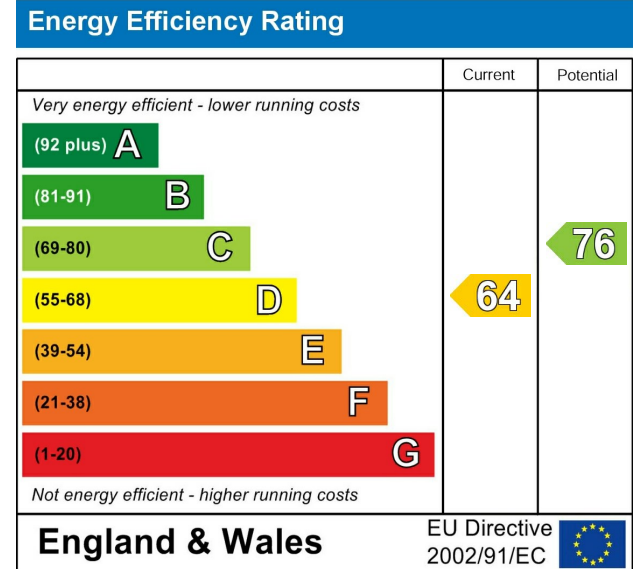
Large Garage

Brick Built Store

Front and Rear Gardens

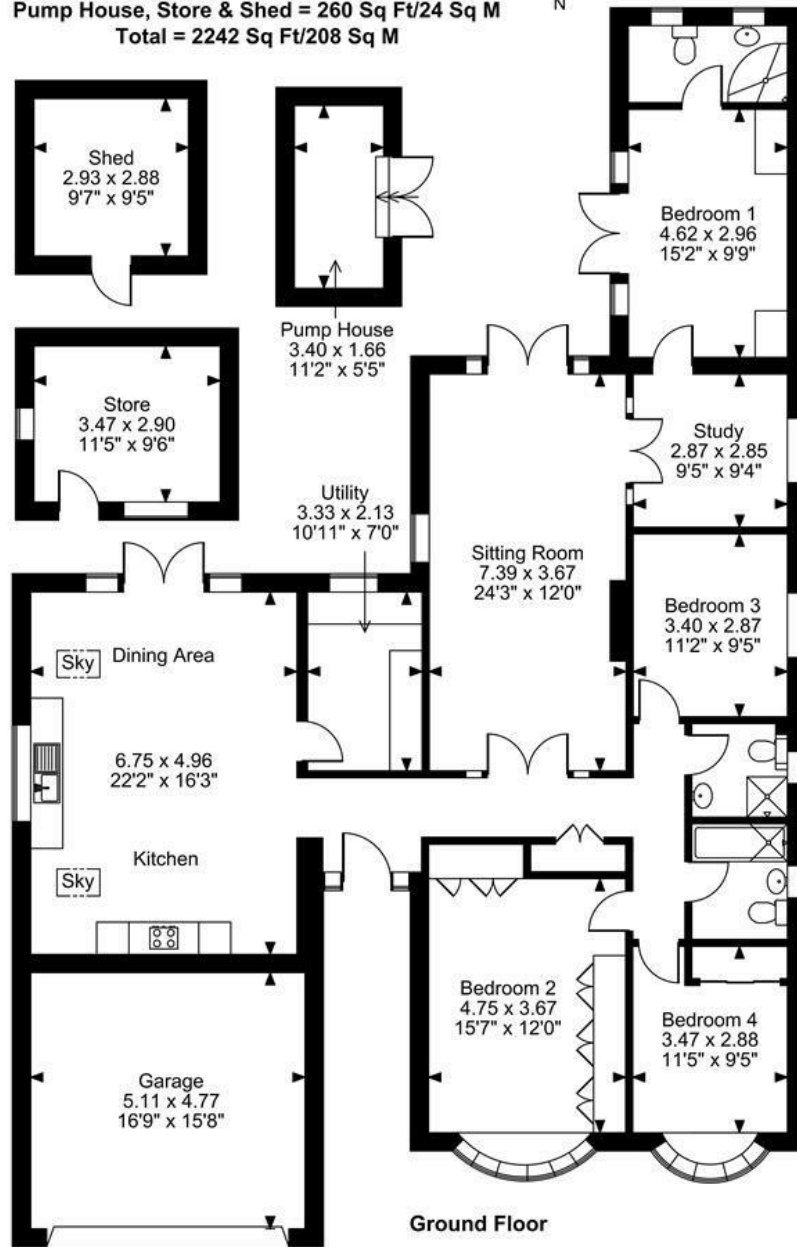
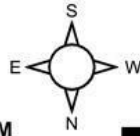
VIEWING

Strictly by arrangement with the Agent's Bearsted Office, 132 Ashford Road, Bearsted, Maidstone, Kent ME14 4LX . Tel: 01622 739574.



Page & Wells limited for themselves and for the vendors of this property whose agents they are give notice that: 1. These particulars do not constitute any part of, an offer or a contract. 2. All statements contained in these particulars as to this property are made without responsibility on the part of Page & Wells Limited or the Vendor. 3. None of the statements contained in these particulars as to the property is to be relied on as statements or representations of fact. 4. Any intending purchaser must satisfy himself by inspection or otherwise as to the correctness of each of the statements contained in these particulars. 5. The vendor does not make or give, and neither Page & Wells Limited nor any person in their employment has any authority to make or give any representation whatsoever in relation to this property. These particulars are supplied on the understanding that all negotiations are carried out throughout Page & Wells Limited. Properties with a reference prefixes EAA are those which Page & Wells Limited disclose an interest in accordance with the provisions of the Estates Agents Act 1979

Old Lain, Harrietsham, Maidstone
 Approximate Gross Internal Area
 Main House = 1720 Sq Ft/160 Sq M
 Garage = 262 Sq Ft/24 Sq M
 Pump House, Store & Shed = 260 Sq Ft/24 Sq M
 Total = 2242 Sq Ft/208 Sq M



FOR ILLUSTRATIVE PURPOSES ONLY - NOT TO SCALE

The position & size of doors, windows, appliances and other features are approximate only.
 © ehouse. Unauthorised reproduction prohibited. Drawing ref. dig/8678531/LCO

