



Candishe House

1 Queen Elizabeth Street, SE1

£1,750 pcm

A bright one double bedroom apartment situated on the first floor of this well run development in the heart of Shad Thames. The apartment benefits from a south facing reception and refurbished kitchen.



Candishe House

1 Queen Elizabeth Street, SE1

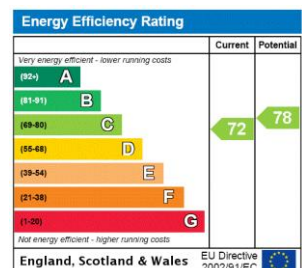
- Modern and Bright Apartment
- 1 Bedroom
- Heart of Shad Thames
- Excellent location for London Bridge

A bright 1 bedroom apartment situated on the 1st floor of this well run development in the heart of Shad Thames. The apartment benefits from a south facing reception room, modern kitchen and double bedroom with built in storage. The property is in an excellent location for both London Bridge station and Tower Hill stations. The apartment is available on a furnished basis.

Shad Thames is a unique area steeped in history and character situated along the south side of the River Thames. The area is home to London's most iconic landmark, Tower Bridge and is within the vicinity of many attractions such as The Shard, Tate Modern and Tower of London. Shad Thames boasts a variety of bars and restaurants and is a short walk to the delights of Bermondsey Street, Maltby Street & Borough markets. Although The City is within walking distance the area is well connected with excellent transport links via London Bridge & Tower Hill stations as-well as the river taxi.

Tenure: To be advised
Furnished

Additional tenant charges apply (fees apply to non-AST tenancies only)
Tenancy Agreement Fee: £300
References per Tenant/Guarantor: £60
Inventory check (approx. £100 – £250 inc. VAT)
[chestertons.com/property-to-rent/applicable-fees](https://www.chestertons.com/property-to-rent/applicable-fees)



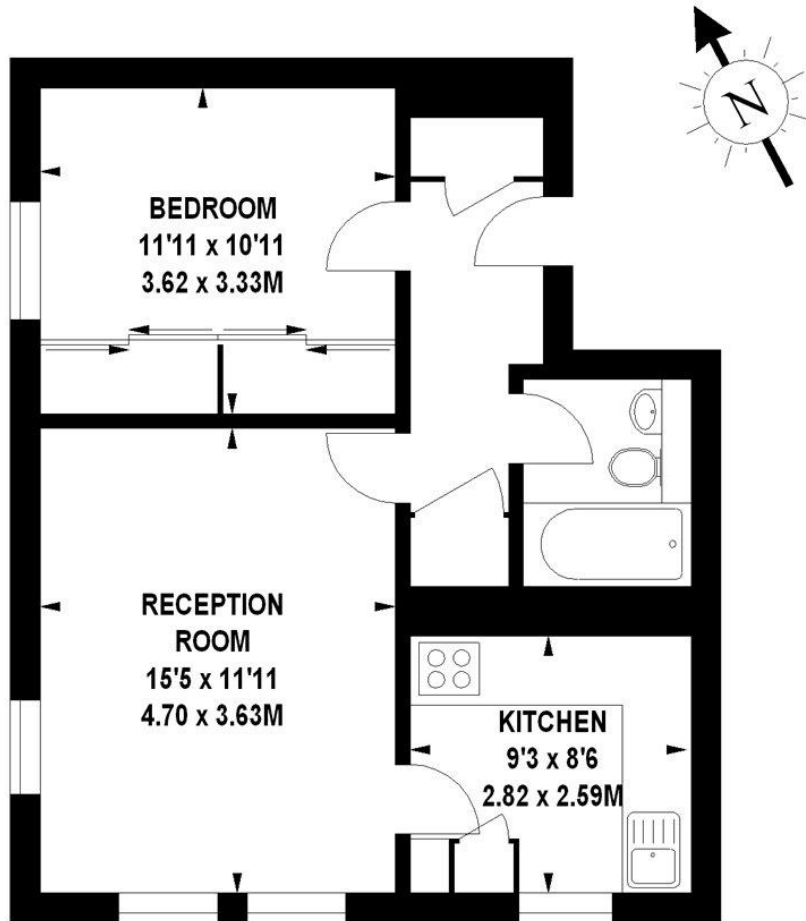
Chestertons Tower Bridge Lettings

220 Tower Bridge Road
Tower Bridge
London
SE1 2UP
lettings.towerbridge@chestertons.com
02073576911
[chestertons.com](https://www.chestertons.com)

Candishe House, SE1

Approximate gross internal area

48.96 sq m / 527 sq ft



First Floor

The floor plan is not to scale and measurements and areas shown are approximate and therefore should be used for illustrative purposes only.

The plan has been prepared in accordance with the RICS code of Measuring Practice and whilst we have confidence in the information produced, it must be not be relied on.

If there is any aspect of particular importance, you should carry out or commission your own inspection of the property.

Copyright of FeaturePRO.

