



St. Stephens Road

Hounslow, TW3

Situated on a popular residential road, this beautifully presented two/three bedroom first floor maisonette is offered to the market with no forward chain. The property is ideally located for access to Hounslow mainline station, a range of local schools and local amenities.

Tenure: Share of Freehold

EPC Energy Efficiency Rating: D

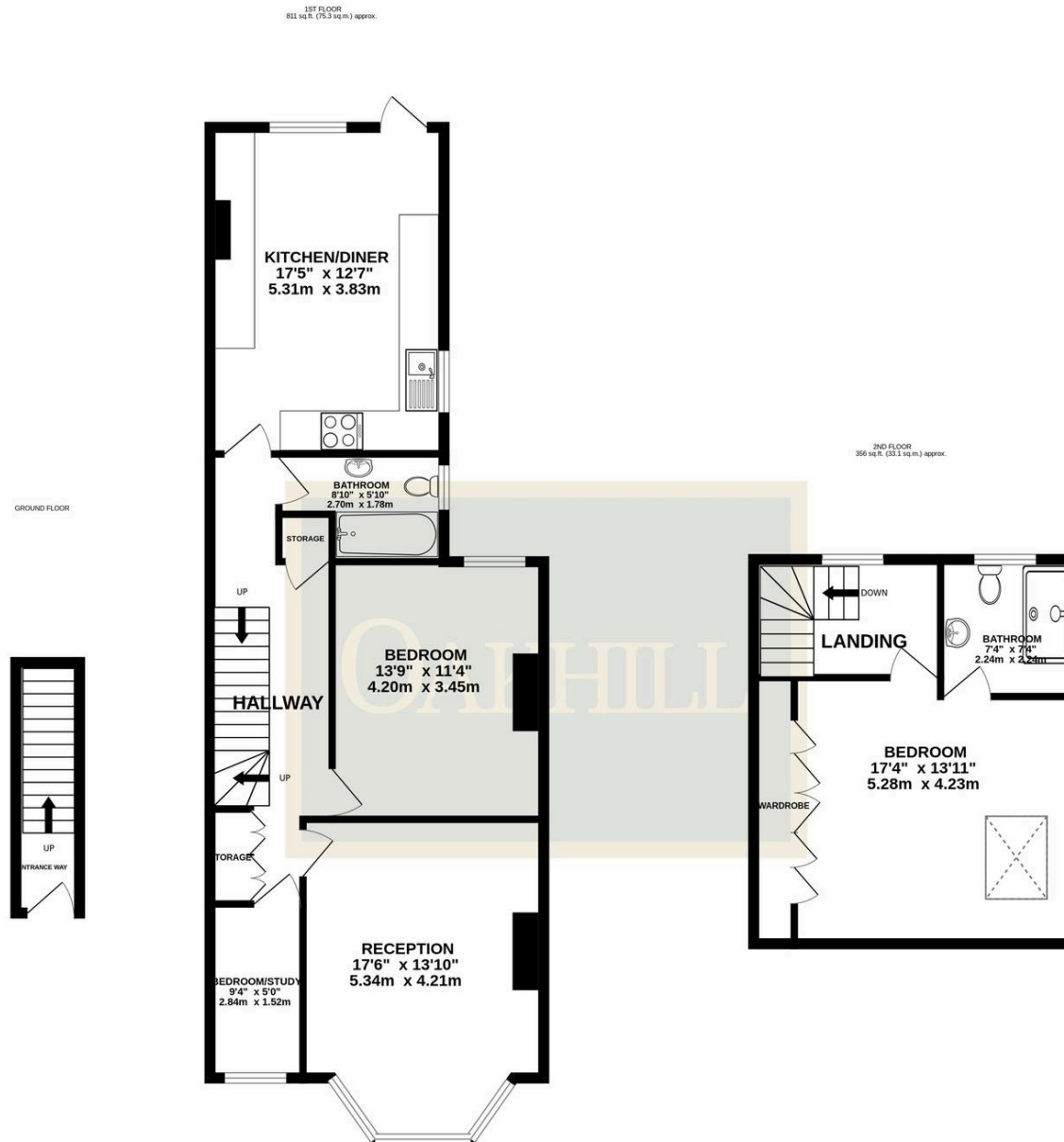
EPC Environmental Impact Rating: D

- No Forward Chain
- Share of Freehold
- Two/Three Bedrooms
- Private Rear Garden
- Well Presented & Over 1100 Sq Ft
- Short walk to Hounslow Station - Ideal for Heathrow Airport
- Two Bathrooms
- Gas Central Heating



SCAN HERE
FOR
PROPERTY
DETAILS





TOTAL FLOOR AREA : 1152sq.ft. (107.0 sq.m.) approx.

Whilst every attempt has been made to ensure the accuracy of the floorplan contained here, measurements of doors, windows, rooms and any other items are approximate and no responsibility is taken for any error, omission or mis-statement. This plan is for illustrative purposes only and should be used as such by any prospective purchaser. The services, systems and appliances shown have not been tested and no guarantee as to their operability or efficiency can be given.

Made with Metropix ©2026

OAKHILL