



Rutland Gate, SW7

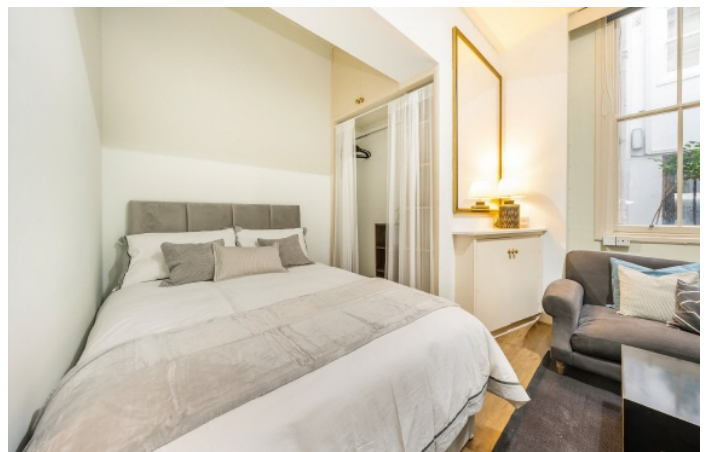
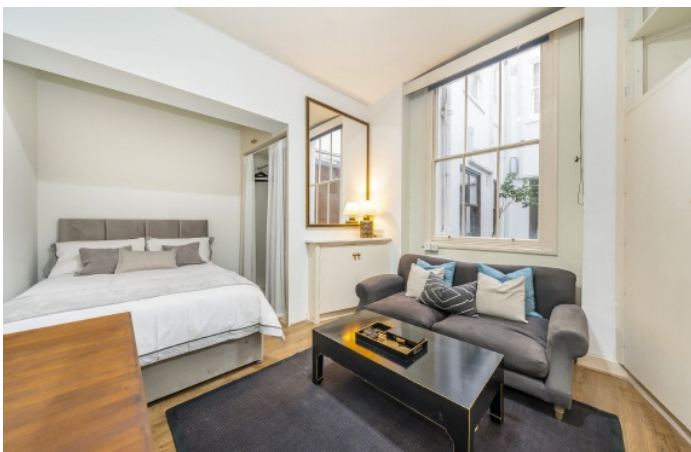
£475 Per week

A contemporary, fully furnished studio apartment available to let, situated on the lower ground floor of an elegant period conversion overlooking a garden square in Knightsbridge.

Situated near Hyde Park and Harrods, Rutland Gate is a highly desirable and prestigious address in the heart of Knightsbridge. Knightsbridge Underground Station provides the nearest transport links.

Features

- Studio Flat
- Victorian Conversion
- Fully Equipped Kitchen
- Wooden Flooring
- Built In Storage
- Contemporary Finish

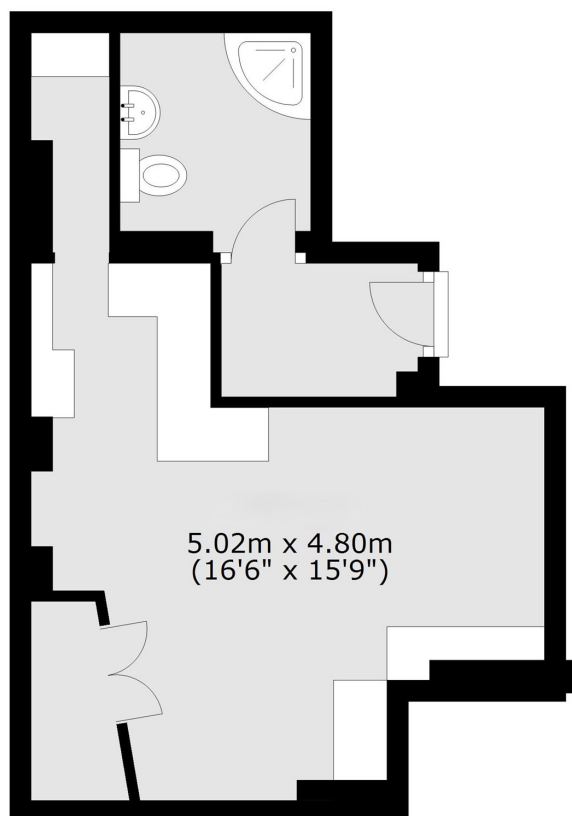


Rutland Gate, SW7



Rutland Gate, London, SW7

Lower Ground Floor



Total area: approx. 26.5 sq. metres (285.2 sq. feet)