

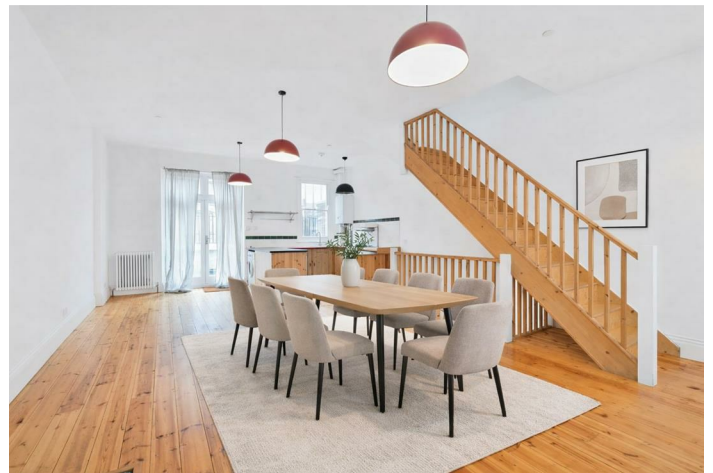


Harrow Road, W10 Freehold - £999,950

As Sole agents, Camerons Stiff & Co. are proud to offer this character terraced studio/loft style property, offering over 1614 sq ft of living space. Set over three floors with views over the Grand Union Canal, the property is within walking distance of Queens Park, Kensal Rise, Ladbrook Grove and Westbourne Park.

The property offers a spacious 38 ft split-level double reception room with stripped wooden floor and exposed brick work. The First Floor offers a 26 ft with stripped wooden flooring, a kitchen area and a door leading to a South-facing terrace overlooking the canal. The Top Floor offers two exposed brick feature fireplaces and a shower room with a double shower. The property is offered with no upper chain and could be divided to have more bedrooms, or kept as is and used as a home and artist studio. This is an excellent property for someone who needs space, or works from home.

Harrow Road is close to the popular Queen's Park, Kensington Memorial Park and a short distance from Portobello Road, known for its vibrant markets, boutique shops, and trendy cafés. Chamberlayne Road is nearby offering a selection of gastropubs, bakeries, and independent stores. Transport links include Kensal Green (Bakerloo & Overground - Zone 2).



020 7328 2828

enquiries@cameronsstiff.co.uk

cameronsstiff.co.uk





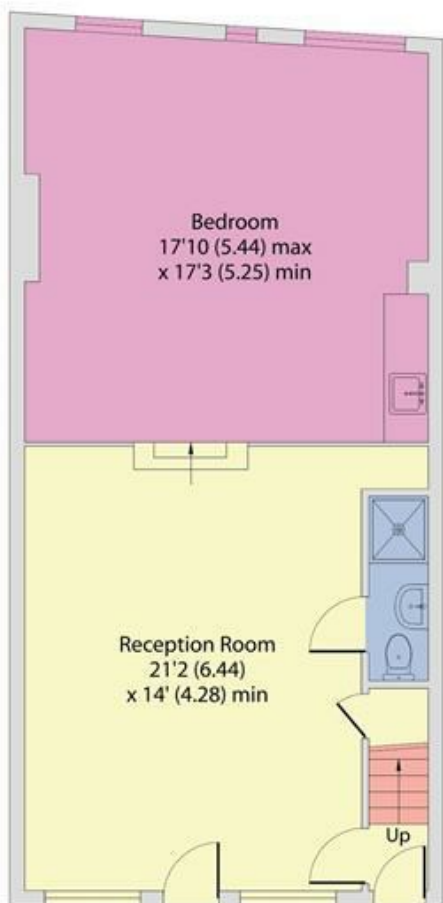
Harrow Road, London, W10

Approximate Area = 1614 sq ft / 149.9 sq m

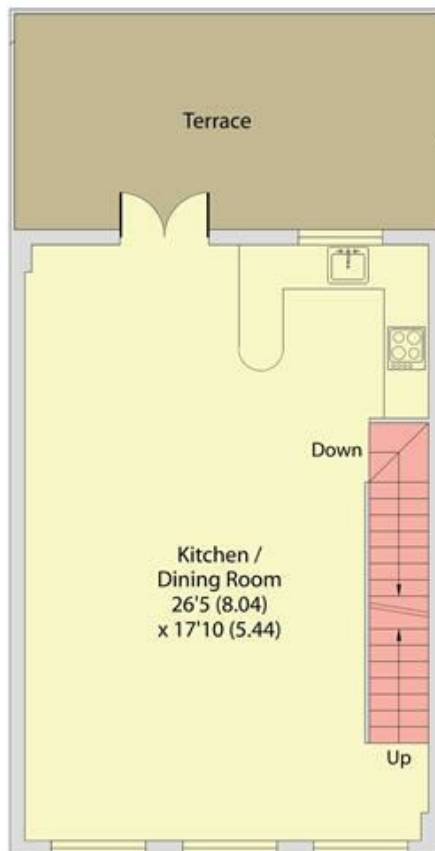
For identification only - Not to scale



SECOND FLOOR



GROUND FLOOR



FIRST FLOOR

EPC: D

Ref: 19478616



Floor plan produced in accordance with RICS Property Measurement 2nd Edition, Incorporating International Property Measurement Standards (IPMS2 Residential). Produced for Camerons Stiff & Co. REF: 1350387. © nichecom 2025.

