

£925 pcm

Wisbech Road, March, Cambridgeshire PE15 8ED



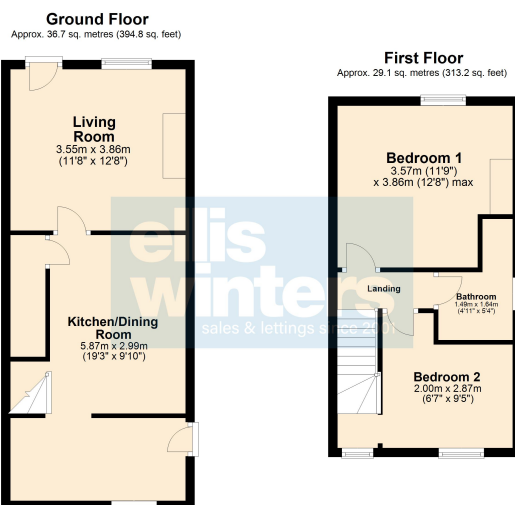
To arrange a viewing call us now on 01354 694900

Deposit £1,067

A well presented 2 bedroom end terraced home available to rent in the popular town of March. The property offers a lounge, spacious kitchen/diner, two good sized bedrooms and a family bathroom.

Outside benefits include off road parking for 2 vehicles and rear garden.

Conveniently located close to local amenities and schools.



Total area: approx. 65.8 sq. metres (708.0 sq. feet)

ellis winters
sales & lettings since 2001

£925 pcm

Wisbech Road, March, Cambridgeshire PE15 8ED



GROUND FLOOR

Living Room
3.86m (12'8") x 3.55m (11'8")

Dining Room
3.93m (12'11") x 2.99m (9'10")

Kitchen
3.86m (12'8") x 1.82m (6')

Tenant Reference and Credit Checks

As part of our standard pre-tenancy process, we carry out credit and reference checks on all prospective tenants. These checks are essential to ensure suitability for the tenancy and are conducted in accordance with relevant data protection laws (GDPR). The cost of these checks is fully covered by Ellis Winters, and no charge is passed on to the applicant.



FIRST FLOOR

Bedroom 1
3.86m (12'8") max. x 3.57m (11'9")
plus 0.80m (2'7") x 0.80m (2'7")

Bathroom
1.64m (5'4") x 1.49m (4'11")
plus 0.80m (2'7") x 0.80m (2'7")

Bedroom 2
2.87m (9'5") x 2.00m (6'7")
plus 0.80m (2'7") x 0.80m (2'7")

Disclaimer

All property details, photographs, floorplans, and other marketing materials produced by Ellis Winters are for general guidance only and do not form part of any contract. While we strive for accuracy, measurements, descriptions, and other information are provided in good faith but should be independently verified. We recommend that prospective tenants conduct their own due diligence before making any decisions.



OUTSIDE

Off road parking for 2 vehicles and rear garden.

Mains gas central heating, Mains water and drainage, electricity.



EPC – C
Council Tax Band A



ellis winters 20 Market Hill, Chatteris, Cambridgeshire, PE16 6BA

Tel: 01354 694900 Email: info@elliswinters.co.uk www.elliswinters.co.uk