



Amhurst Road, E8

£400,000

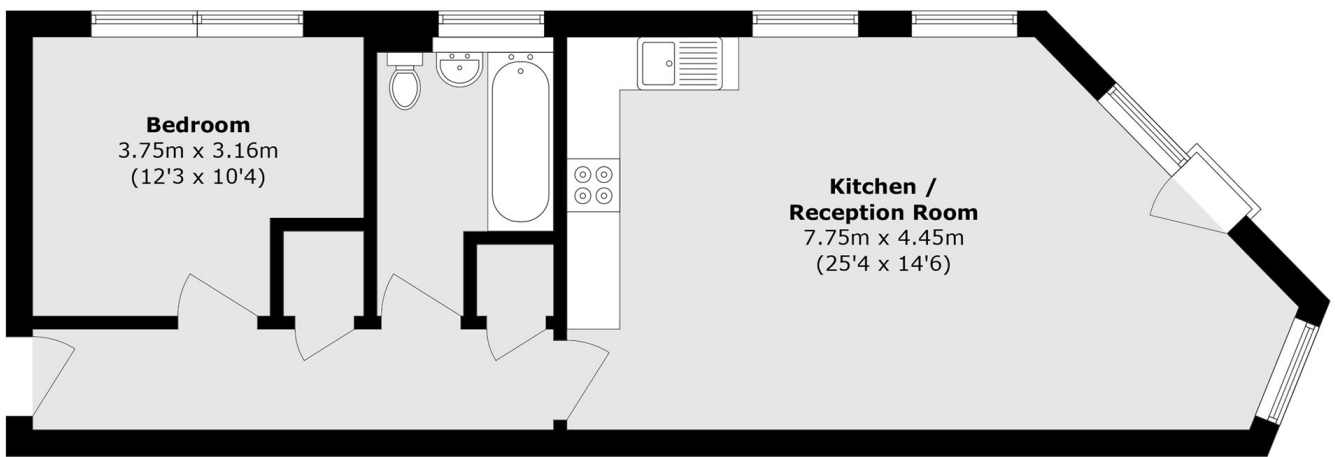
A spacious one bedroom flat on Amhurst Road which offers plenty of natural light and modern design. This property provides a large, open plan reception/kitchen with large windows and built in appliances, a generous double bedroom and a family bathroom.

Located equidistant to Rectory Road and Hackney Downs stations for the Weaver line, allowing easy access throughout London. Hackney Downs park is nearby providing an open green space and there is a selection of cafés, shops and bars nearby.

Features

- One Double Bedroom
- Great Location
- Modern Design
- Built In Storage
- Nearby Park
- Open Plan

Amhurst Road, London, E8



Total area (approx.): 58.9 sq. m (633.9 sq. ft)