



Connells

Rendlesham Road
Ipswich



Property Description

The property benefits from two bedrooms, lounge, kitchen, ground floor bathroom, front and rear gardens and has the added bonus of being offered with no onward chain, the property is also conveniently located for local shopping facilities and Ipswich town centre itself has a mainline railway station with gives direct access to London Liverpool Street.

Lounge

Access via double glazed entrance door, upvc double glazed window to front, wood effect flooring, feature fireplace, coved and textured ceiling, radiator and doors giving access to:

Kitchen

Upvc double glazed window to rear, space for fridge freezer, space and plumbing for washing machine, built in oven, built in hob with stainless steel splash backs and filter hood over, 1 1/2 bowl sink with mixer tap inset in a roll edge work surface with cupboards and drawers under and matching above, tiled flooring, radiator, smooth coved ceiling with inset spotlighting, storage cupboard and doors giving access to:

Bathroom

Upvc double glazed window to side, low level w/c, pedestal wash hand basin, shaped and panel bath with mixer tap, part tiled walls, heated towel rail and extractor fan.

First Floor Landing

Doors giving access to:

Bedroom One

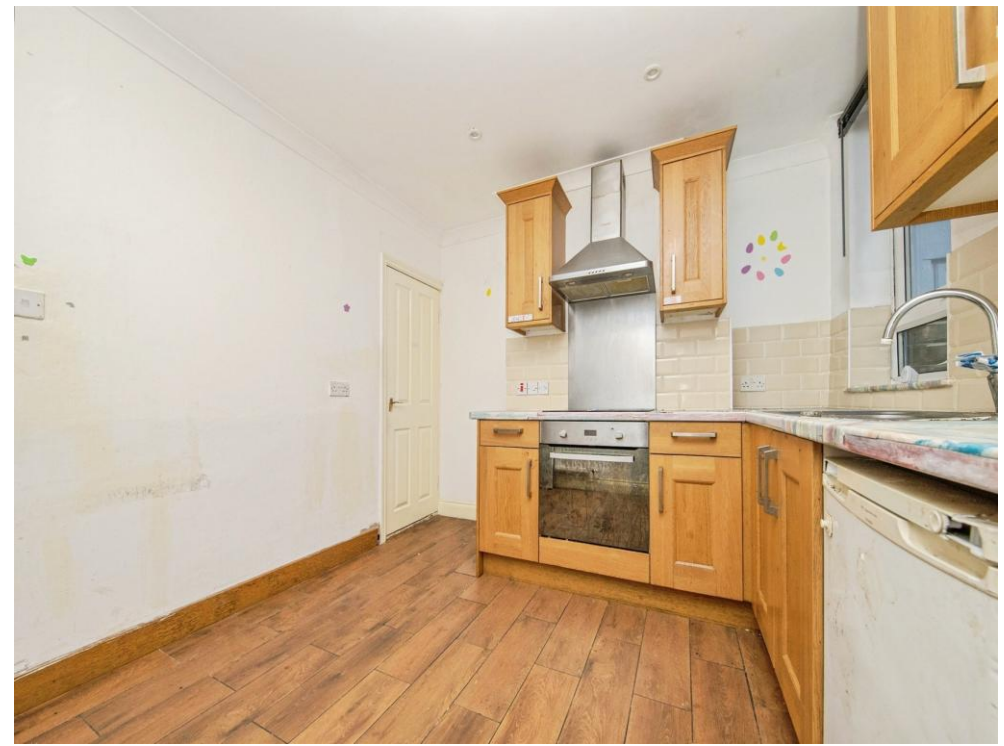
Upvc double glazed window to front, built in double wardrobes and storage cupboard.

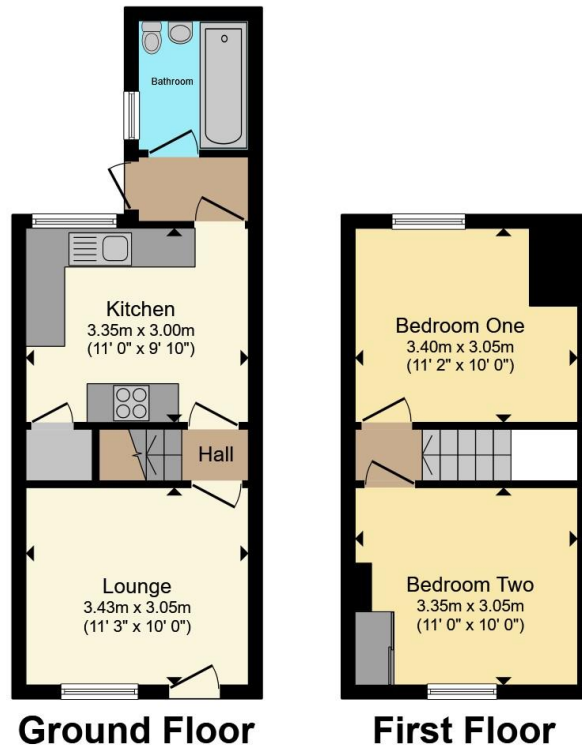
Bedroom Two

Upvc double glazed window to rear, built in wardrobe, airing cupboard housing wall mounted boiler, radiator, coved and textured ceiling.

Outside

To the front of the property there is shrubs and a pathway leading to the front door and the remainder is artificial lawn, There is also shared access to the rear garden. The rear garden has a patio approx 35 ft in length and storage shed.





Total floor area 53.8 m² (579 sq.ft.) approx

This floor plan is for illustrative purposes only. It is not drawn to scale. Any measurements, floor areas (including any total floor area), openings and orientation are approximate. No details are guaranteed, they cannot be relied upon for any purpose and they do not form part of any agreement. No liability is taken for any error, omission or misstatement. A party must rely upon its own inspection(s). Powered by www.propertybox.io

Connells



To view this property please contact Connells on

T 01473 233 966
E ipswich@connells.co.uk

6 Princes Street
 IPSWICH IP1 1QT

EPC Rating: C Council Tax
 Band: A

view this property online connells.co.uk/Property/ICH312634

Tenure: Freehold



1. MONEY LAUNDERING REGULATIONS Intending purchasers will be asked to produce identification documentation at a later stage and we would ask for your co-operation in order that there will be no delay in agreeing the sale. 2. These particulars do not constitute part or all of an offer or contract. 3. The measurements indicated are supplied for guidance only and as such must be considered incorrect. Potential buyers are advised to recheck measurements before committing to any expense. 4. We have not tested any apparatus, equipment, fixtures, fittings or services and it is in the buyers interest to check the working condition of any appliances.

Connells Residential is registered in England and Wales under company number 1489613, Registered Office is Cumbria House, 16-20 Hockliffe Street, Leighton Buzzard, Bedfordshire, LU7 1GN. VAT Registration Number is 500 2481 05.

See all our properties at www.connells.co.uk | www.rightmove.co.uk | www.zoopla.co.uk

Property Ref: ICH312634 - 0003