

Sinclair  Hammelton



ASKING PRICE

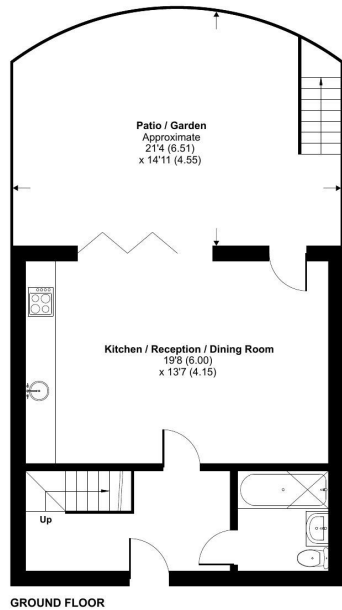
£450,000

Hayes Lane

Bromley, BR2 9EJ

Sinclair  Hammelton

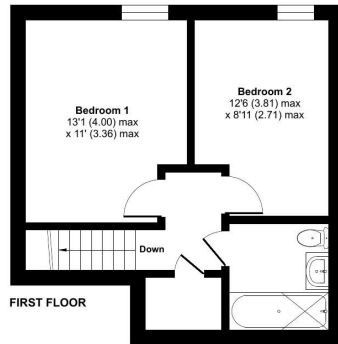
EPC RATING: B COUNCIL TAX BAND: E



Hayes Lane, Bromley, BR2

Approximate Area = 779 sq ft / 72.3 sq m

For identification only - Not to scale



Floor plan produced in accordance with RICS Property Measurement 2nd Edition, incorporating International Property Measurement Standards (IPMS Residential). © nchecom 2026. Produced for Sinclair Hammelton GI & HL Investments Ltd. REF: 146406



Energy Efficiency Rating		Current	Potential
Very energy efficient - lower running costs			
(92 plus)	A		
(81-91)	B		
(69-80)	C		
(55-68)	D		
(39-54)	E		
(21-38)	F		
(1-20)	G		
Not energy efficient - higher running costs			
England & Wales		83	83
		EU Directive 2002/91/EC	

Agents Note: Whilst every care has been taken to prepare these particulars, they are for guidance purposes only. All measurements are approximate and are for general guidance purposes only and whilst every care has been taken to ensure their accuracy, they should not be relied upon and potential buyers/tenants are advised to recheck the measurements



OFFICE ADDRESS

57 Station Approach
Hayes
Kent
BR2 7EB

OFFICE DETAILS

020 8462 0360
infohy@sinclairhammelton.co.uk
<https://www.sinclairhammelton.co.uk>
for-sale-in-hayes/