

Residential Development Land Sales

**hollis
morgan**
land



Development Site @ Carnival Court, Taunton Road, Bridgwater, Somerset, TA6 6AF

Auction Guide Price +++ £425,000

Hollis Morgan – FEBRUARY LIVE ONLINE AUCTION – A Freehold DEVELOPMENT SITE (1.26 acres) with PLANNING GRANTED for a scheme of 9 x HOUSES with a GDV of circa £2.865m

Development Site @ Carnival Court, Taunton Road, Bridgwater, Somerset, TA6 6AF

FOR SALE BY LIVE ONLINE AUCTION

ADDRESS | Development Site @ Carnival Court, Taunton Road
Bridgwater, Somerset TA6 6AF

Lot Number 23

*** PLEASE NOTE NEW AUCTION START TIME - NOW 12:00
Noon ***

The Live Online Auction is on Wednesday 11th February 2026
@ 12:00 Noon
Registration Deadline is on Friday 6th February 2026 @ 16:00

The Auction will be streamed LIVE ONLINE via the Hollis
Morgan website & you can choose to bid by telephone, proxy
or via your computer.

Registration is a simple online process – please visit the Hollis
Morgan auction website and click “REGISTER TO BID”

THE SITE

Freehold site of approximately 1.26 acres with DETAILED
PLANNING GRANTED for 9 x 3 bedroom houses at the rear of
the recently built apartments facing Taunton Road.
Sold with Vacant Possession

Tenure - Freehold

Utilities, Rights & Restrictions - Please refer to the Legal Pack
Flood Risk - Please refer to the Legal Pack

THE OPPORTUNITY

DEVELOPMENT SITE | PLANNING GRANTED

Detailed Planning (08/21/00077 Somerset Council) has been
granted for the demolition of the existing structures and
construction of a modern scheme of 9 x 3 bedroom dwellings (
ranging 968 SqFt to 1054 Sq Ft) with parking and gardens and
a proposed GDV circa. £2.865m.

The site has rights of access through the car park of the
existing apartment block. See approved plans and Legal Pack
to see extent of ownership and rights.

PROPOSED SCHEDULE OF DEVELOPMENT

Unit 1 – 3 Bedroom Detached House | 1054 Sq Ft | Parking |
Garden

Unit 2 – 3 Bedroom Detached House | 1054 Sq Ft | Parking |
Garden

Unit 3 – 3 Bedroom Semi Detached House | 1054 Sq Ft |
Parking | Garden

Unit 4 – 3 Bedroom Semi Detached House | 968 Sq Ft |
Parking | Garden

Unit 5 – 3 Bedroom Semi Detached House | 968 Sq Ft |
Parking | Garden

Unit 6 - 3 Bedroom Semi Detached House | 1054 Sq Ft |
Parking | Garden

Unit 7 – 3 Bedroom Detached House| 1054 Sq Ft | Parking |
Garden

Unit 8 – 3 Bedroom Detached House | 1054 Sq Ft | Parking |
Garden

Unit 9 – 3 Bedroom Detached House | 1054 Sq Ft | Parking |
Garden

PROPOSED GDV SCHEDULE

Unit 1 – £325,000

Unit 2 – £325,000

Unit 3 – £315,000

Unit 4 – £305,000

Unit 5 – £305,000

Unit 6 – £315,000

Unit 7 – £325,000

Unit 8 – £325,000

Unit 9 – £325,000

Total - £2,845,000

For further information on GDV and sales advice please contact
the Hollis Morgan New Homes Team.

PLANNING GRANTED

Full details of the proposed scheme and drawings can be
downloaded with the online legal pack.

Type: Full / Detailed Planning Permission

Local Authority: Somerset Council

Reference: 08/21/00077

Location: Land To The Rear Of, Carnival Court, Taunton Road,
Bridgwater, Somerset, TA6

Proposal: Erection of 9 no. dwellings with associated access,
amenity space and parking on site of existing outbuildings to
be demolished (Revised

Description)

Registered Date: 23/06/2021

Decision: Granted Permission

Decision Date: 29/08/2025

PLANNING INFORMATION

Full details of the proposed scheme and drawings can be
downloaded with the online legal pack.

LOCATION

The property is situated close to the centre of the market town
of Bridgwater, with local amenities close to hand including
Bridgwater Railway Station. The town centre offers an extensive
range of services including retail, leisure and educational
facilities. Access to the M5 motorway can be found via
junctions 23 and 24. There are regular bus services to Taunton,
Weston-super-Mare and Burnham-on-Sea plus a daily coach to
London Hammersmith.

EXISTING CAR PARK

The property for sale does not include the existing car park. All
rights for access are set out within the legal pack.

SOLICITORS & COMPLETION

David Smithen

Shakespeare Martineau

0330 0240333

david.smithen@shma.co.uk

<https://www.shma.co.uk/>

EXTENDED COMPLETION

Completion is set for 8 weeks or earlier subject to mutual
consent.

LEGAL PACK COMPLETE

We have been informed by our client's solicitors that the legal
pack for this lot is now complete.

Should any last minute addendums occur you will be

Development Site @ Carnival Court, Taunton Road, Bridgwater, Somerset, TA6 6AF

automatically notified by email.

If the vendors have indicated they are willing to consider pre-auction offers, now is the time to submit your offer by completing the pre-auction offer form.

IMPORTANT AUCTION INFORMATION VIEWINGS

Please submit a viewing request online and we will contact you to organise an appointment.

We will send you an email and text to confirm the appointment time and the full property address.

Viewings are supervised by a member of the Hollis Morgan Auction team who will meet you at the property.

MATERIAL INFORMATION

Information including utilities, Electricity supply, Water supply, Sewerage, Heating, Broadband, Mobile signal / coverage, Parking, Building safety, Restrictions and rights, Rights and easements, Flood risk, Erosion risk, Coastal erosion risk, Planning permission for proposal for development, Property accessibility / adaptations, Coalfield or mining area all of which will be supplied within the legal pack that can be accessed for free via the Hollis Morgan website or via your EIG account.

ONLINE LEGAL PACKS

Digital Copies of the Online legal pack can be downloaded Free of Charge.

Please visit the Hollis Morgan Website and select the chosen lot from our Current Auction List.

Press the GREEN button to "Download Legal Packs" For the first visit you will be required to register simply with your email and a password.

Having set up your account you can download legal packs or if they are not yet available, they will automatically be sent to you when we receive them.

You will be automatically updated by email if any new information is added.

There will be a note added to the list to confirm AUCTION PACK NOW COMPLETE when no further information is due to be added.

*** STAY UPDATED *** By registering for the legal pack we can ensure you are kept updated on any changes to this Lot in the build up to the sale.

BUYER'S PREMIUM

Please be aware all purchasers are subject to a £1,500 + VAT (£1,800 inc VAT) buyer's premium which is ALWAYS payable upon exchange of contracts whether the sale is concluded before, during or after the auction date.

GUIDE PRICE

An indication of the seller's current minimum acceptable price at auction. The guide price or range of guide prices is given to assist consumers in deciding whether to pursue a purchase. It is usual, but not always the case, that a provisional reserve range is agreed between the seller and the auctioneer at the start of marketing. As the reserve is not fixed at this stage and

can be adjusted by the seller at any time up to the day of the auction in the light of interest shown during the marketing period, a guide price is issued. This guide price can be shown in the form of a minimum and maximum price range within which an acceptable sale price (reserve) would fall, or as a single price figure within 10% of which the minimum acceptable price (reserve) would fall. A guide price is different to a reserve price (see separate definition). Both the guide price and the reserve price can be subject to change up to and including the day of the auction.

RESERVE PRICE

The seller's minimum acceptable price at auction and the figure below which the auctioneer cannot sell. The reserve price is not disclosed and remains confidential between the seller and the auctioneer. Both the guide price and the reserve price can be subject to change up to and including the day of the auction.

PRE AUCTION OFFERS

Some vendors are willing to consider offers prior to the auction. Pre auction offers can ONLY be submitted by completing the online PRE AUCTION OFFER FORM

The form can be found on the Hollis Morgan website on the individual auction property listing.

Please note offers will not be considered until you have inspected the COMPLETE LEGAL PACK once it has been released.

There will be a note added to the list to confirm AUCTION PACK NOW COMPLETE when our client's solicitor informs us no further information is due to be added.

In the event of an offer being accepted the property will only be removed from the online auction and viewings stopped once contracts have successfully EXCHANGED subject to the standard auction terms and payment of the buyer's premium (£1,800 Inclusive of VAT) to Hollis Morgan.

Contracts can be exchanged via the solicitors or at the Hollis Morgan offices by appointment only.

REGISTRATION PROCESS

The registration process is extremely simple – visit the Hollis Morgan auction website and click on the "Register to Bid" button.

The "Register to Bid" button can be found on the auction home page or on the individual lot listings.

Please note this function is not available on Rightmove or Zoopla.

Stage 1 – Complete the Online Bidding Form

Stage 2 – Upload your certified ID

Stage 3 – Invitation to bid

Stage 4 – Pay your security deposit (£6,800)

You are now ready to bid – Good luck!

If your bid is successful, the balance of the deposit monies must be transferred to our client account within 24 hours of the auction sale.

If you are unsuccessful at the auction your holding deposit will be returned within 48 hours.

Development Site @ Carnival Court, Taunton Road, Bridgwater, Somerset, TA6 6AF

SURVEYS AND VALUATIONS

If you would like to arrange a survey or mortgage valuation of this Lot BEFORE the auction, please instruct your appointed surveyor to contact Hollis Morgan and we will arrange access for them to inspect the property. Please note that buyers CANNOT attend the surveys and the surveyors are responsible for collecting and returning keys to the Hollis Morgan offices in Clifton.

AUCTION FINANCE & BRIDGING LOANS

Some properties may require specialist auction finance- please contact Hollis Morgan for access to expert advice and whole of market rates from our independent brokers.

Hollis Morgan may receive introductory fees for this service from the broker.

AUCTION BUYER'S GUIDE VIDEO

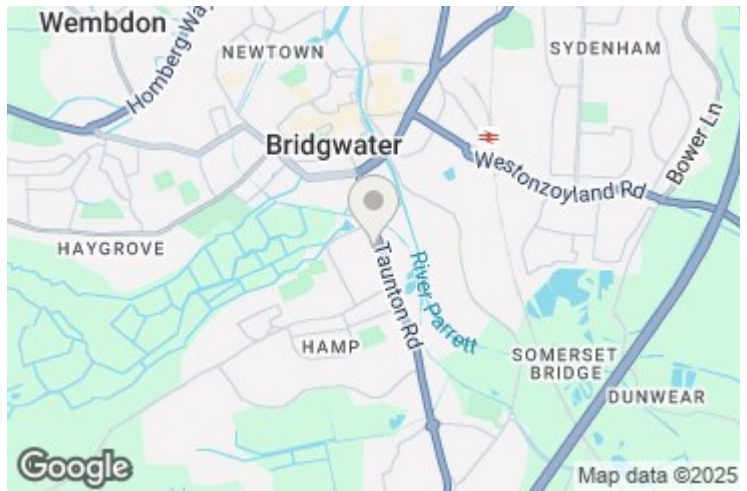
We have short video guides for both buying and selling by Public Auction on the Hollis Morgan Website. If you have any further questions regarding the process, please don't hesitate to contact Auction HQ.

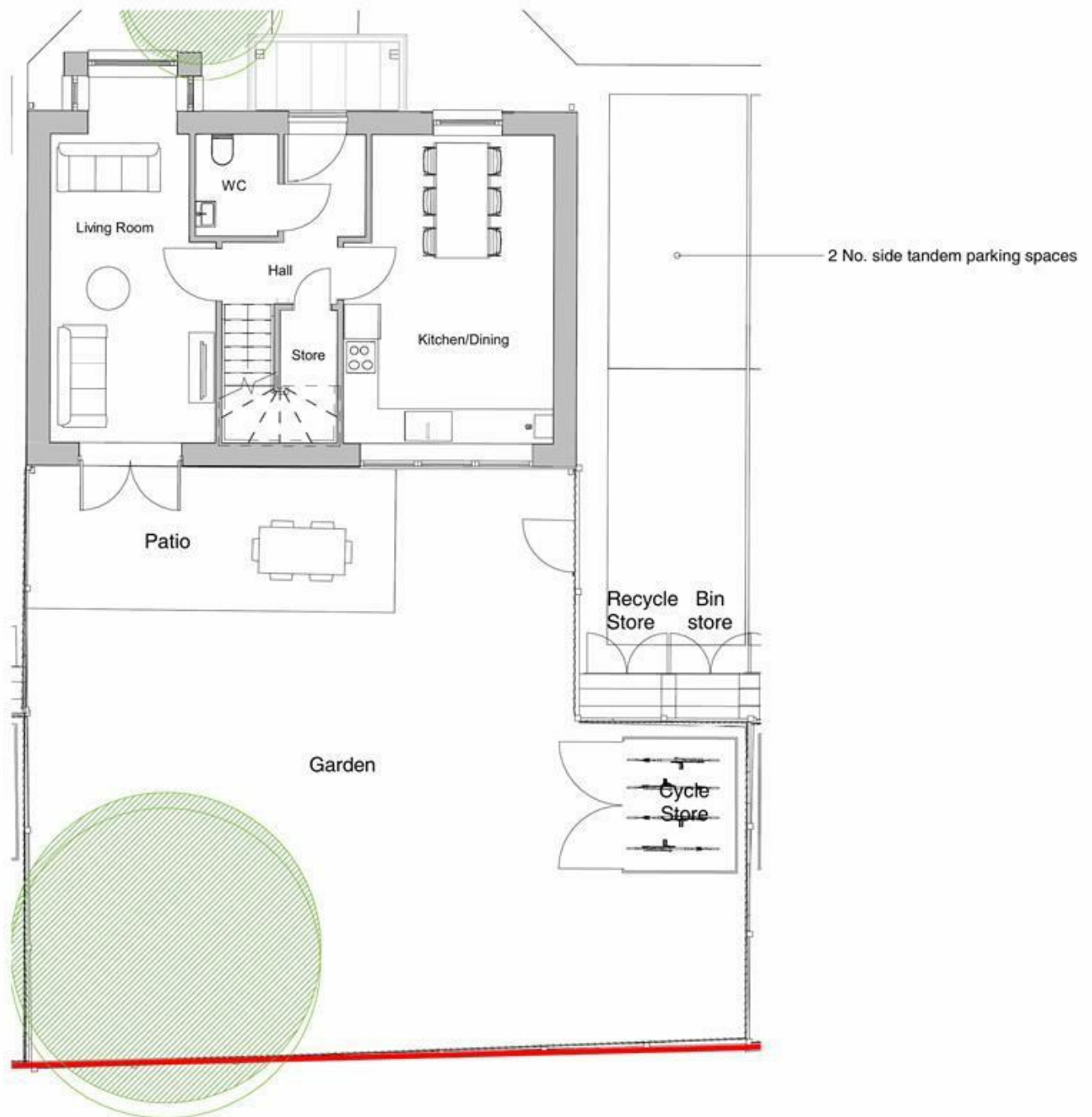
2026 CHARITY OF THE YEAR

Hollis Morgan are proud to be supporting Bristol Schools Rugby Union as our 2026 Charity of the Year. BSRU (working in association with Bristol Bears) oversee and support rugby in all schools, State and Independent , in the Greater Bristol area. Bristol Schools provide School Rugby Development opportunities and County level fixtures for secondary boys and girls. Including playing fixtures at U18s against the leading Independent Schools in our region, schools such as Clifton College, BGS, QEH, Collegiate and Millfield. For more information and details of the fixture list please follow them on Instagram.

AUCTION PROPERTY DETAILS DISCLAIMER

Hollis Morgan endeavour to make our sales details clear, accurate and reliable in line with the Consumer Protection from Unfair Trading Regulations 2008 but they should not be relied on as statements or representations of fact, and they do not constitute any part of an offer or contract. All Hollis Morgan references to planning, tenants, boundaries, potential development, tenure etc is to be superseded by the information contained in the legal pack. It should not be assumed that this property has all the necessary Planning, Building Regulation, or other consents. Any services, appliances and heating system(s) listed have not been checked or tested. Please note that in some instances the photographs may have been taken using a wide-angle lens. The seller does not make any representation or give any warranty in relation to the property, and we have no authority to do so on behalf of the seller.





House Type 3 Bedroom - Ground Floor

1 : 100

e-mail: post@hollismorgan.co.uk www.hollismorgan.co.uk

9 Waterloo Street, Clifton, Bristol BS8 4BT. Telephone: **0117 973 65 65**

Hollis Morgan Property Limited, registered in England, registered 7275716. Registered address, 5 Upper Belgrave Road, Clifton, Bristol BS8 2XQ