



1 Bedroom | 1 Bathroom | 1 Reception Room

Liddell Court | Foxley Hill Road | Purley | CR8 2HD

£60,000

LOFT

Liddell Court | Foxley Hill Road |
Purley | CR8 2HD
£60,000

- Chain free first floor retirement apartment
- Sought after block, just a stones throw from Purley town centre with all the amenities and train station
- Off road car parking to the rear
- Great size reception room with space for lounging and dining
- Separate kitchen space
- Double bedroom and bathroom with walk-in shower
- Requires updating with plenty of scope to improve throughout
- Bus links within minutes walk

First Floor

Hallway

Reception Room

14'1 x 11'8 (4.29m x 3.56m)

Kitchen

11'5 x 4'9 (3.48m x 1.45m)

Bedroom

13'4 x 8'9 (4.06m x 2.67m)

Bathroom

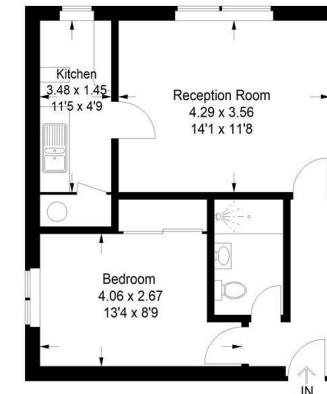
Outside

Communal Car Park



Liddell Court, CR8

Approximate Gross Internal Area
41.8 sq m / 450 sq ft



First Floor

This plan is for layout guidance only. Not drawn to scale unless stated. Windows and door openings are approximate. Whilst every care is taken in the preparation of this plan, please check all dimensions, shapes and compass bearings before making any decisions reliant upon them. (ID1271873)



EPC Rating:

23a High Street
Purley
Surrey
CR8 2AF
0208 660 8070
hello@loft-estates.co.uk