



SALES

LETTINGS

MANAGEMENT

chiswick@tatepartnership.co.uk

020 8996 0000

TATEPARTNERSHIP.CO.UK



Blandford House, Chiswick

£700,000

Newly Decorated and Newly Carpeted, this bright modern 822 sq/ft two bed two bath second floor apartment (lift), is set within a purpose built block on Chiswick High Road. Ready to move straight in, the refreshed accommodation comprises; two good double bedrooms, living/dining room, separate kitchen, bathroom & en-suite shower room. The development benefits from lift access & private gated car park with allocated parking space. The location is on the bustling al fresco dining culture of Chiswick High Road and just a short walk from both Stamford Brook and Turnham Green tube stations. Leasehold. Full Vacant Possession. EPC: C

Blandford House, Chiswick

Floor Plan

Approximate gross internal area
76 sq m / 822 sq ft

Chiswick High Road

Approximate Gross Internal Area = 76.4 sq m / 822 sq ft

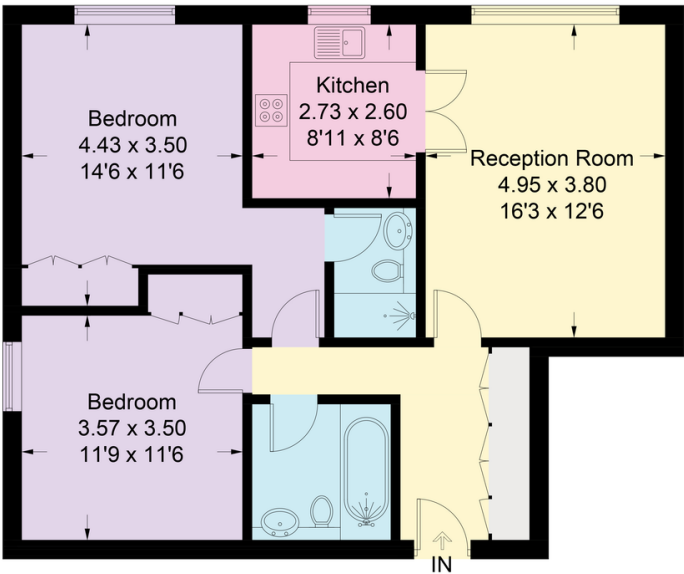


Illustration for identification purposes only, measurements are approximate, not to scale. Fourlabs.co © (ID1173283)

EPC

