

Central Hill, London, SE19 1BS

Guide Price £425,000

3 1 1



- Please Quote HM1127 For All Enquiries
- Open Day 2nd May (By Appointment Only)
- Bright And Spacious Kitchen/Diner
- Approx. 1,007 sq ft / 93.6 sqm
- Close To Gipsy Hill Station With Excellent Links Into Central London
- Guide Price £425,000–£475,000
- Three Bedrooms
- Substantial Loft
- Walking Distance To Crystal Palace Triangle And Crystal Palace Park

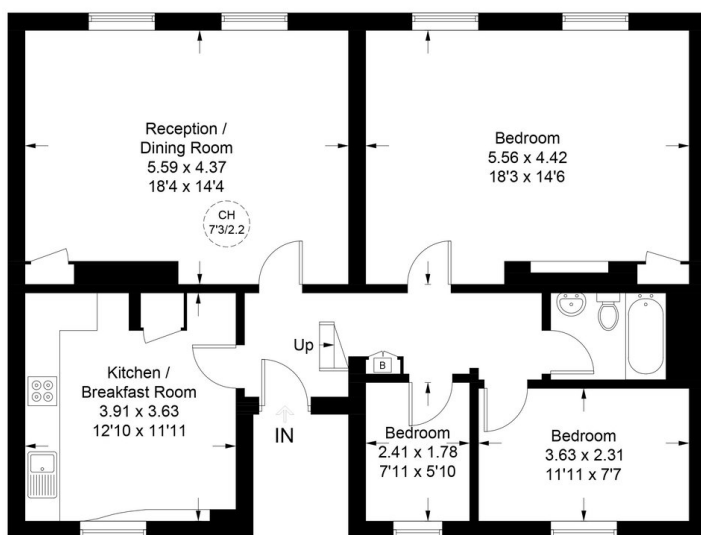


Central Hill

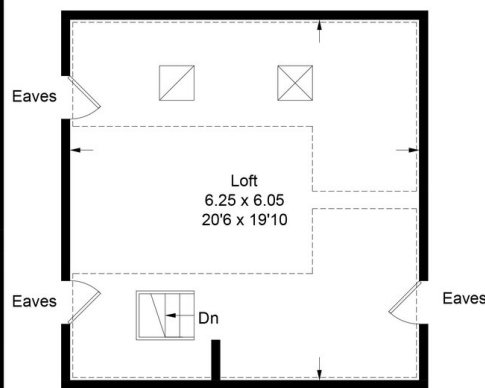
Approximate Gross Internal Area
 Second Floor = 93.6 sq m / 1007 sq ft
 Loft = 37.8 sq m / 407 sq ft
 Total = 131.4 sq m / 1414 sq ft
 Including Limited Use Area (27.9 sq m / 300 sq ft)



= Reduce head height below 1.5m



Second Floor



Third Floor

Illustration for identification purposes only, not for valuation purposes, measurements are approximate, not to scale. IPMS2

Chain-Free | Guide Price £425,000–£475,000 | Open Day 2nd May (By Appointment Only) | Ref: HM1127

Set within one of SE19’s most desirable pockets, this impressive three-bedroom home on Central Hill offers an exceptional blend of space, versatility, and lifestyle—ready to move straight into with no onward chain.