



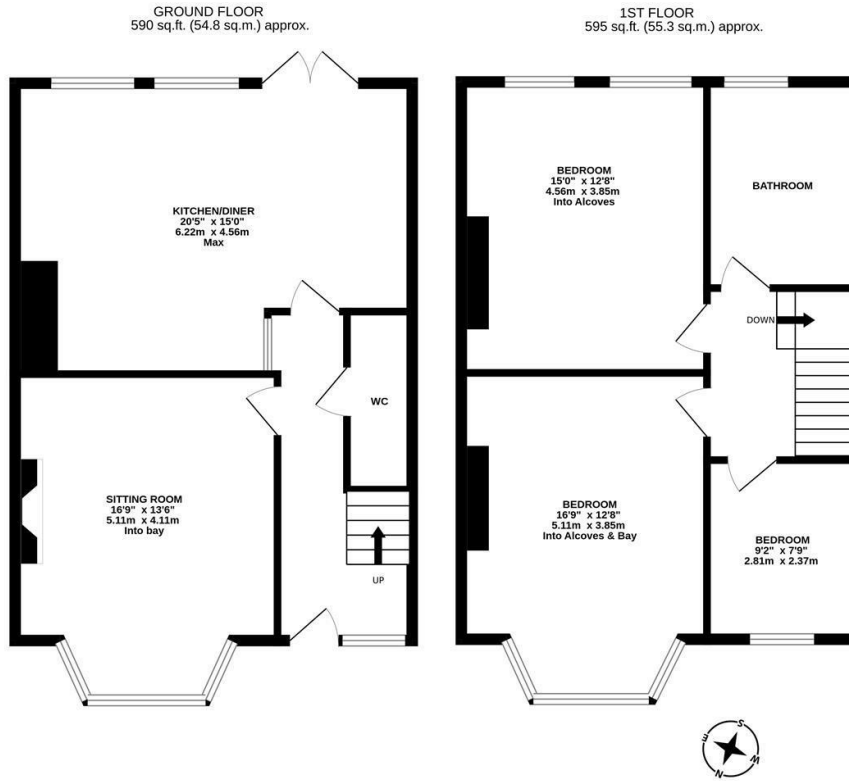
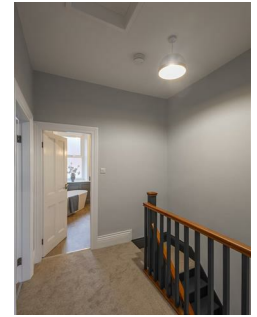
Fully Refurbished Throughout with an Impressive 20ft Kitchen Diner a Generous South Facing Rear Yard and No Onward Chain! This stylish three bedroom mid-terrace is ideally located on the south backing side of Salters Road, Gosforth. Salters Road is perfectly placed close to the shops and amenities of Kenton Park Shops and Ashburton Road. It also has excellent transport links on Kenton Road and Salters Road providing easy access to Newcastle City Centre and beyond.

Offering close to 1,200 Sq ft over two floors, the accommodation briefly comprises: entrance hall with stairs to first floor and under-stairs WC; sitting room with walk in bay and feature fireplace; an impressive 20ft kitchen diner with dual windows, French doors leading out to the rear yard and internal Crittal glass doors, kitchen with a range of fitted units, work surfaces, integrated appliances, breakfasting island and both spot and hanging lighting. The first floor landing gives access to; three bedrooms, bedrooms one and two both generous doubles, bedroom one with walk in bay and bedroom two with dual windows; super stylish family bathroom complete with four piece suite including a free standing bath, step in shower and spot lighting.

Externally, a front town garden with gravel and wall boundaries and to the rear, a south facing yard, laid mainly to paving providing a patio seating area, with a separate gravelled area and fenced boundaries. Offered to the market with no onward chain, early viewings are deemed an absolute must to avoid disappointment!

Stylish Period Mid-Terrace | Fully Refurbished | 1,185 Sq ft (110.1m²) | Three Bedrooms | Sitting Room | Impressive 20ft Open Plan Kitchen Diner | Downstairs WC | Super Stylish Bathroom with Four Piece Suite | Front Town Garden & South Facing Rear Yard | Great Location | Freehold | No Onward Chain | Council Tax Band C | EPC:D

EPC: Rating D



Offers Over £375,000

IMPORTANT NOTE: These particulars and the descriptions and measurements herein do not constitute representation and whilst every effort has been made to ensure accuracy, this cannot be guaranteed.

