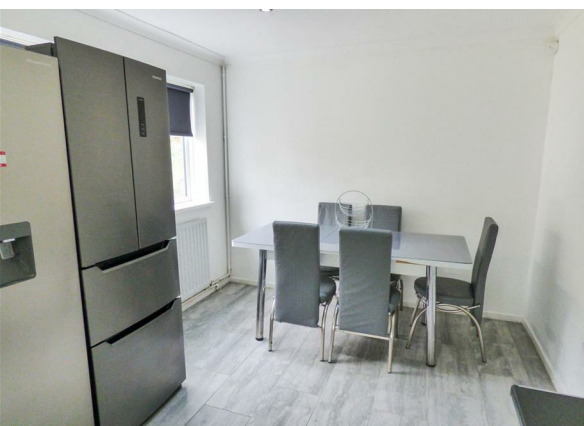
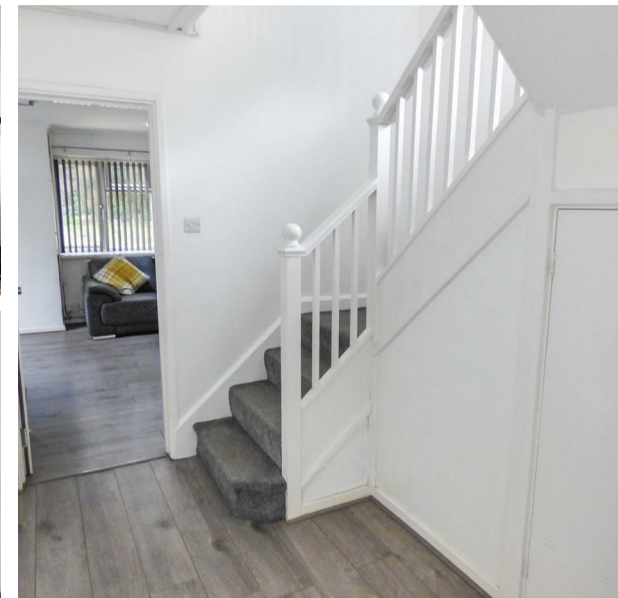
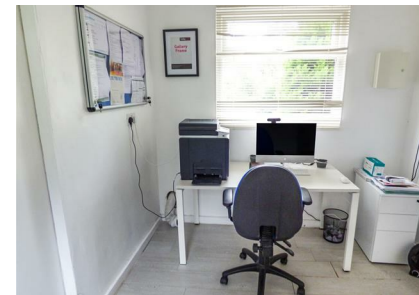


Hawkenbury, Harlow, CM19 4HY

£575,000

Council Tax Band: F



A Spacious Family Home with Exceptional Potential in a Prime Location

This well-proportioned four-bedroom home offers generous living accommodation throughout, making it an ideal choice for families seeking space, comfort, and convenience. Thoughtfully arranged and full of potential, the property provides a superb foundation for creating your perfect long-term home.

The ground floor features a bright and welcoming reception room, perfect for everyday relaxation, alongside a separate dining room suited to more formal occasions. The kitchen/breakfast room offers an inviting hub for family meals and entertaining, complemented by a practical utility room for laundry and additional storage. A cloakroom and dedicated storage room add further convenience.

Upstairs, the property boasts four well-sized bedrooms, providing ample flexibility for family living, home working, or guest accommodation. A well-appointed family bathroom completes the first floor.

Outside, the home features a driveway and garage, providing off-street parking and secure storage. The generous wrap-around garden provides excellent outdoor space for children to play, gardening enthusiasts to enjoy, or for hosting gatherings during the warmer months.

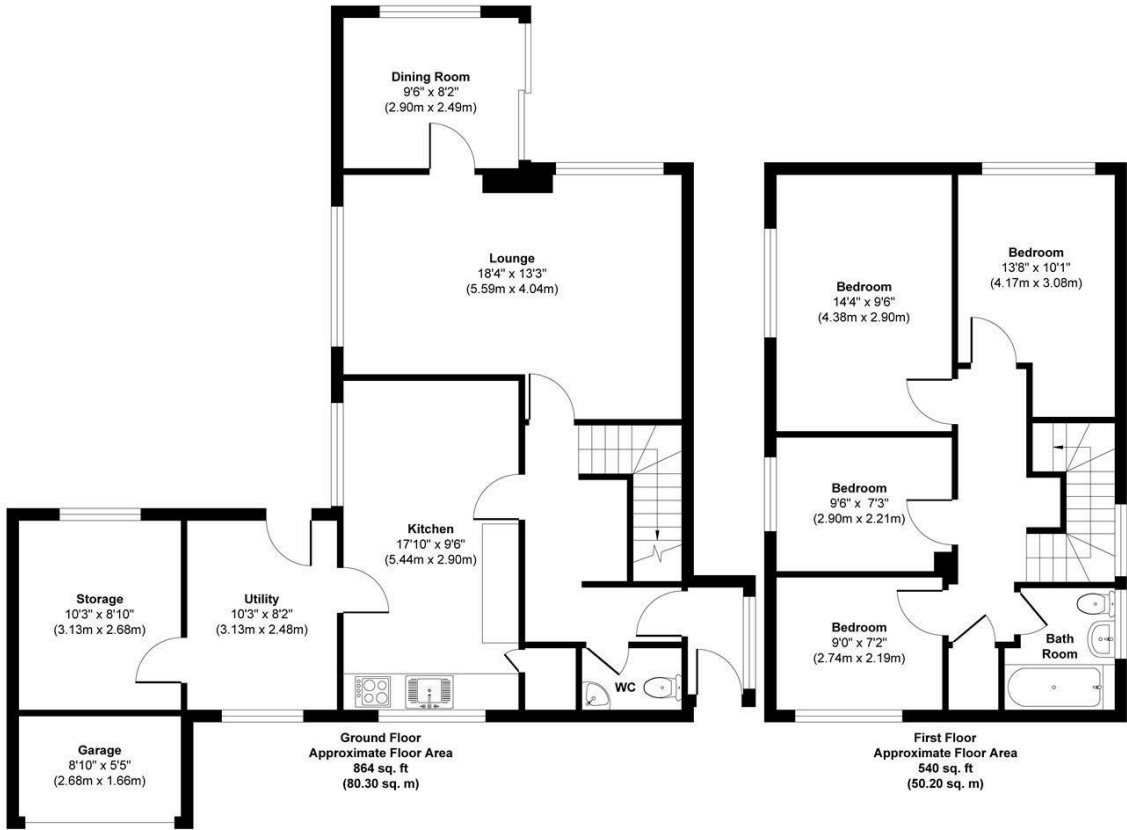
Location Highlights

This property is superbly positioned close to a range of local amenities, including shops, restaurants, and both junior and senior schools — ideal for busy family life. Princess Alexandra Hospital is within easy reach, offering added peace of mind.

Commuters will appreciate excellent transport links, with Harlow Town train station providing direct services to London, Cambridge, and Stansted Airport. The nearby M11 ensures straightforward



Open House Brentwood



Approx. Gross Internal Floor Area 1404 sq. ft / 130.50 sq. m  
Illustration for identification purposes only, measurements are approximate, not to scale.  
Produced by Elements Property



| Energy Efficiency Rating                    |         |                         |
|---|---------|-------------------------|
|   | Current | Potential               |
| Very energy efficient - lower running costs |         |                         |
| (92 plus) A                                 |         |                         |
| (81-91) B                                   |         |                         |
| (69-80) C                                   |         | 79                      |
| (55-68) D                                   | 59      |                         |
| (39-54) E                                   |         |                         |
| (21-38) F                                   |         |                         |
| (1-20) G                                    |         |                         |
| Not energy efficient - higher running costs |         |                         |
| England & Wales                             |         | EU Directive 2002/91/EC |