



Luscombe Maye  
Since 1873



# Saffron Park, Kingsbridge

Guide Price £228,000

🛏 2 🚿 1 🚗 1





- Enclosed Rear Garden
- Naturally Light and Bright
- Open Plan Living
- Modern & Stylish Throughout
- Off Road Parking
- Far Reaching Views Across Kingsbridge
- Walking Distance to Amenities
- 2 Bedrooms
- Contemporary Bathroom





29 Saffron Park, Kingsbridge, TQ7 1RW  
 Approximate Gross Internal Floor Area = 51.62 sq m/ 555 sq ft

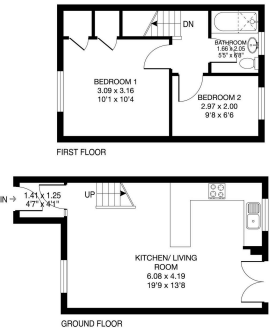
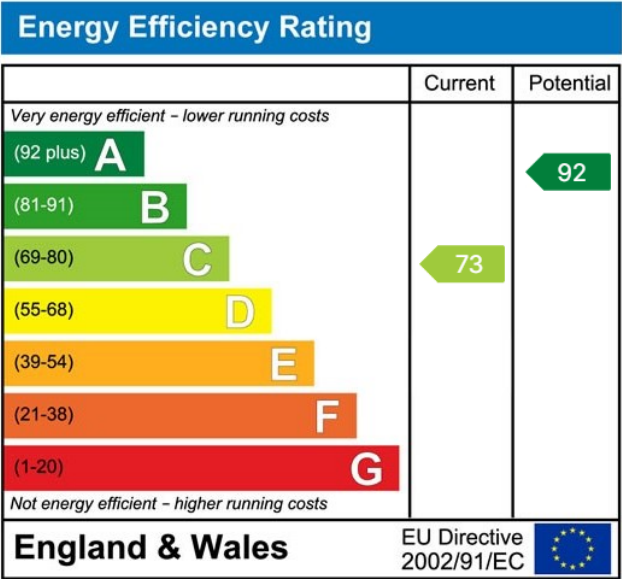


Illustration for identification purposes only, measurements are approximate, not to scale.

A stylish and modern two bedroom home, perfectly positioned in an elevated position offering far reaching south-west facing views



Important Notice: Luscombe Maye gives notice that: 1. These particulars do not constitute an offer or contract or part thereof. 2. All descriptions, photographs and plans are for guidance only and should not be relied upon as statements or representations of fact. All measurements are approximate and not necessarily to scale. Any prospective purchaser must satisfy themselves of the correctness of the information within the particulars by inspection or otherwise. 3. Luscombe Maye does not have any authority to give any representations or warranties whatsoever in relation to this property (including but not limited to planning/building regulations), nor can it enter into any contract on behalf of the Vendor.