

## Hermitage Lane, NW2

Guide Price £575,000

🛏 1 🚿 1 🛋 1

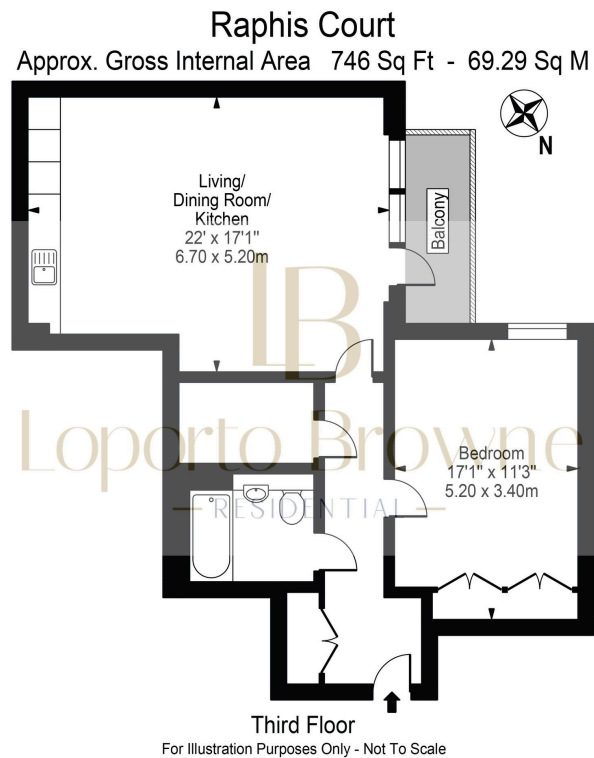


**Guide Price £575,000 to £625,000**

Welcome to Raphis Court, an unusually spacious one-bedroom apartment set on the third floor of a modern, secure development on the cusp of Hampstead and Golders Green. Offering an impressive 746 sq ft of well-designed living space, this lateral apartment stands out for its generous proportions, contemporary finishes, and a west-facing balcony with stunning sunset views across northwest London — the sort of vistas you'll want to share with all your friends.

## Key Features

- Guide Price £575,000 to £625,000
- 746 sq.ft
- 1 bed, 1 bathroom, with high end appliances
- Open plan living room, kitchen, with space to WFH
- West facing balcony with sunset vistas
- Abundance of storage throughout
- Bespoke joinery with internal lighting
- Herringbone Wooden floors
- Communal garden access
- Oli & Liana are delighted to be instructed on this wonderful flat, please watch the video and book a viewing



This floor plan should be used as a general outline for guidance only and does not constitute in whole or in part an offer or contract. Any intending purchaser or lessee should satisfy themselves by inspection, searches, enquiries and full survey as to the correctness of each statement. Any areas, measurements or distances quoted are approximate and should not be used to value a property or be the basis of any sale or let.