



62 Westover Road, Portsmouth

Offers in Region of £300,000





62 Westover Road

Portsmouth

Step inside this beautifully presented three-bedroom end-of-terrace home and discover a property perfectly suited to modern family living, ideally located close to Baffins Pond and Great Salterns Recreation Ground.

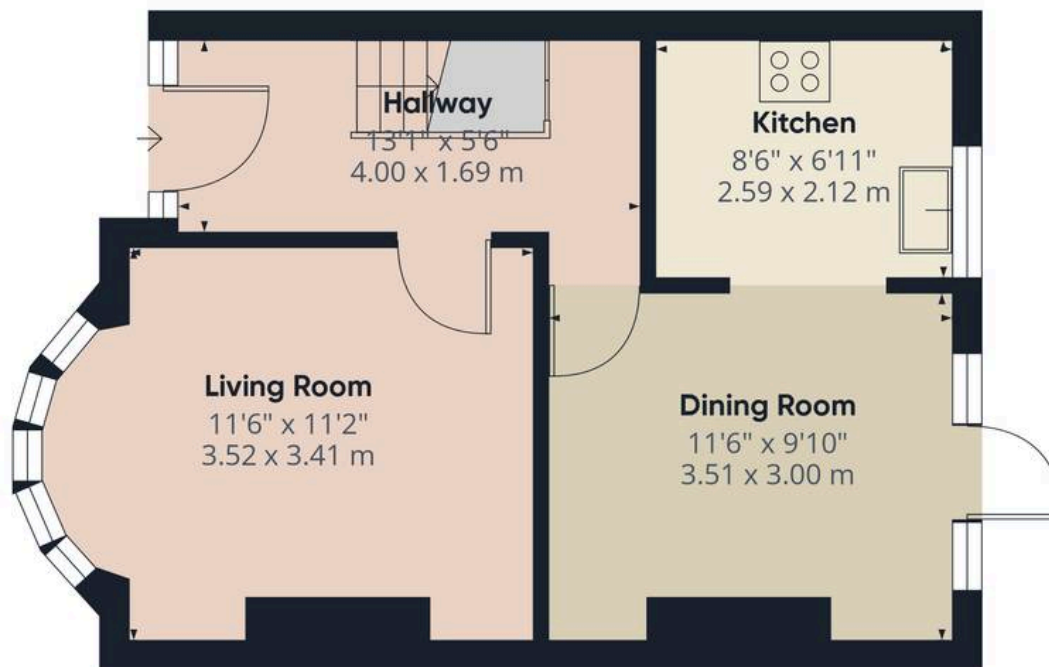
At the heart of the home is a stylish open-plan kitchen and dining area, ideal for both entertaining and everyday meals, with contemporary fittings and ample space to gather. The bright and airy living areas are enhanced by large windows and neutral décor, creating a welcoming atmosphere ready to personalise.

Upstairs offers three well-proportioned bedrooms, perfect for families, guests or a home office, alongside a fresh, modern bathroom. A garage provides secure parking or valuable storage space.

With excellent access to local shops, schools and transport links, this versatile, move-in-ready home is an outstanding choice for first-time buyers or growing families alike.

Material Information • Tenure: Freehold • Council Tax: Band C: Electricity: Mains Supply • Heating: Gas • Water Supply: Mains Supply • Sewage: Mains Supply • Broadband: Standard, Superfast and Ultrafast Fibre are all available in this area • Parking: Garage for a small car/On Street • Mobile: Ofcom official website checker states that EE, Vodafone, O2 and Three available in the area • Flood Risk: Low Risk





Ground Floor



Floor 1

Approximate total area⁽¹⁾

755 ft²

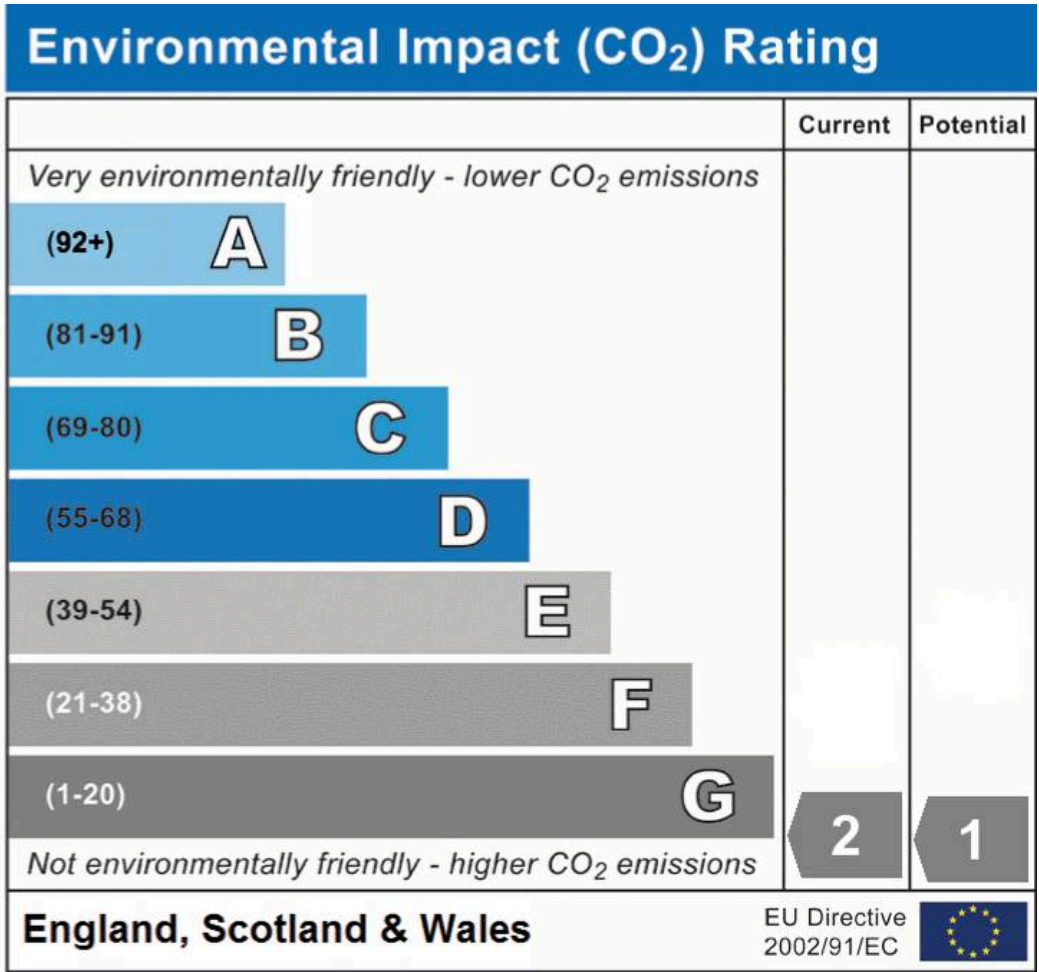
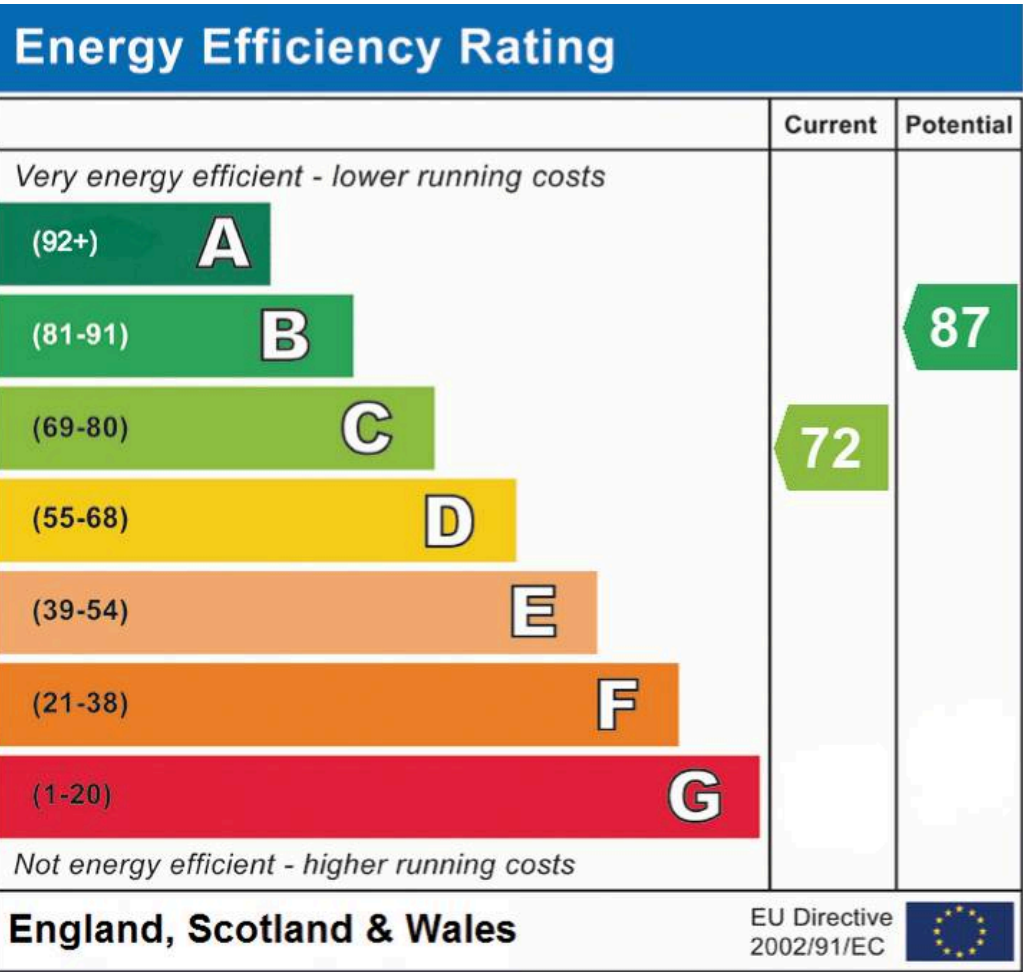
70.2 m²

(1) Excluding balconies and terraces

Calculations reference the RICS IPMS 3C standard. Measurements are approximate and not to scale. This floor plan is intended for illustration only.

GIRAFFE360





Chinneck Shaw
 Bridge House, Milton Road, Portsmouth – PO3 6AN
 023 9282 6731
 hello@chinneckshaw.co.uk
 www.chinneckshaw.co.uk/

Chinneck Shaw, Bridge House, Milton Road, PO3 6AN Consumer Protection from Unfair Trading Regulations 2008: These details are for guidance only and complete accuracy cannot be guaranteed. If there is any point which is of particular importance, verification should be obtained. The do not constitute a contract or part of a contract. All measurements are approximate. No guarantee can be given with regard to planning permissions or fitness for purpose. No apparatus, equipment, fixture or fitting has been tested. Items shown in the photographs are NOT necessarily included. Interested Parties are advised to check availability and make an appointment to view before travelling to see a property.