

Admiral Seymour Road, London, SE9 1SN

Asking Price £475,000

Situated on the heart of the Progress Estate comes this TWO bedroom terraced home. Renovated to a high standard to include a modern fitted kitchen which is open plan to the lounge, pitched roof conservatory. To the first floor there are two well appointed bedrooms, a dressing room and a four piece bathroom suite. To the rear the garden is larger than average and is mainly laid to lawn. Situated just a few minutes walk to shops and main line station. Viewing comes recommended. Greenwich borough council tax band D. EPC rating D.

ENCLOSED ENTRANCE PORCH

A wooden front door with frosted glass insert to an enclosed entrance porch, casement windows to side and above, radiator, wooden door with multi paneled insert to the entrance hall.

ENTRANCE HALL

Stairs to first floor, under stairs storage cupboard, inset spotlights, door to the kitchen.

FITTED KITCHEN



A range of eye and base units, wooden work surface, one and a half ceramic sink unit with mixer taps and drainer, wall mounted boiler, built in double oven, four ring hob with extractor fan over, integrated dishwasher and fridge freezer, plumbing for washing machine, wooden flooring, double glazed window to rear, inset spotlights, breakfast bar, open plan to the lounge.

LOUNGE



A double glazed Georgian window to front, radiator, laminate flooring, inset spotlights, fireplace with wooden mantle, double glazed French patio doors to the conservatory.

CONSERVATORY



A pitched roof conservatory, double glazed windows to side and rear, two double glazed doors for access to the garden, radiator, laminate flooring, wall mounted lights.

LANDING

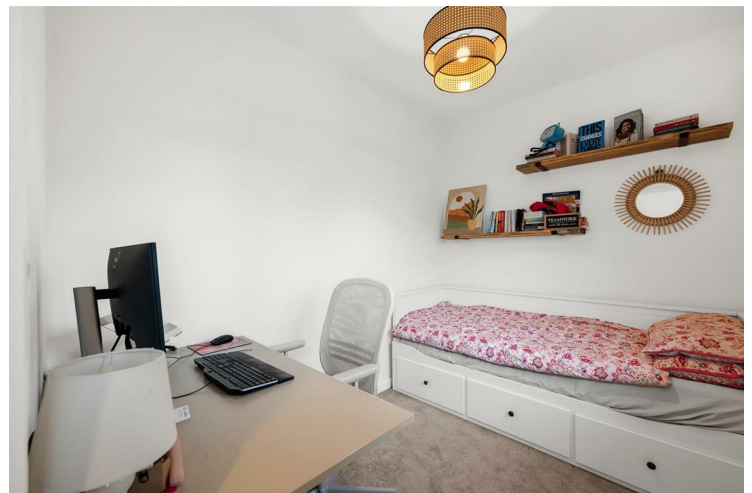
Stairs to the first floor, double glazed Georgian window to front, access to loft via hatch, centre light point.

BEDROOM ONE



A double glaze Georgian window to rear, radiator, centre light point.

BEDROOM TWO



A double glazed Georgian window to front, radiator, centre light point.

DRESSING ROOM

A cleverly adapted dressing room, centre light point, door to bathroom.

BATHROOM



A four piece suite comprising panel enclosed bath with mixer taps, pedestal wash hand basin, low flush w/c, walk in fixed and detachable head power shower, glass door, inset spotlights, half tiled surround, extractor fan, tiled flooring, substantial sized storage cupboard, double glazed frosted window to rear, towel rail radiator.

REAR GARDEN

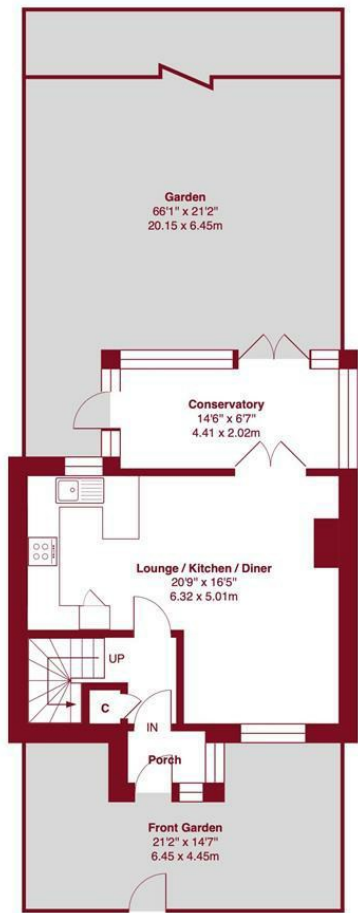


Out side tap and lighting, mainly laid to lawn with detached timber storage shed.

FRONTAGE

A picket fence to front, path to front door, laid to lawn with shingle borders.

Floor Plan

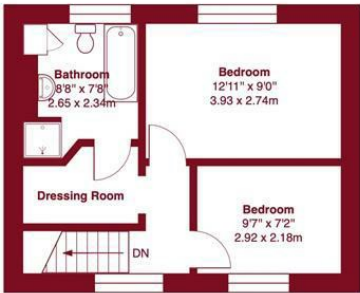


Ground Floor



Admiral Seymour Road, SE9

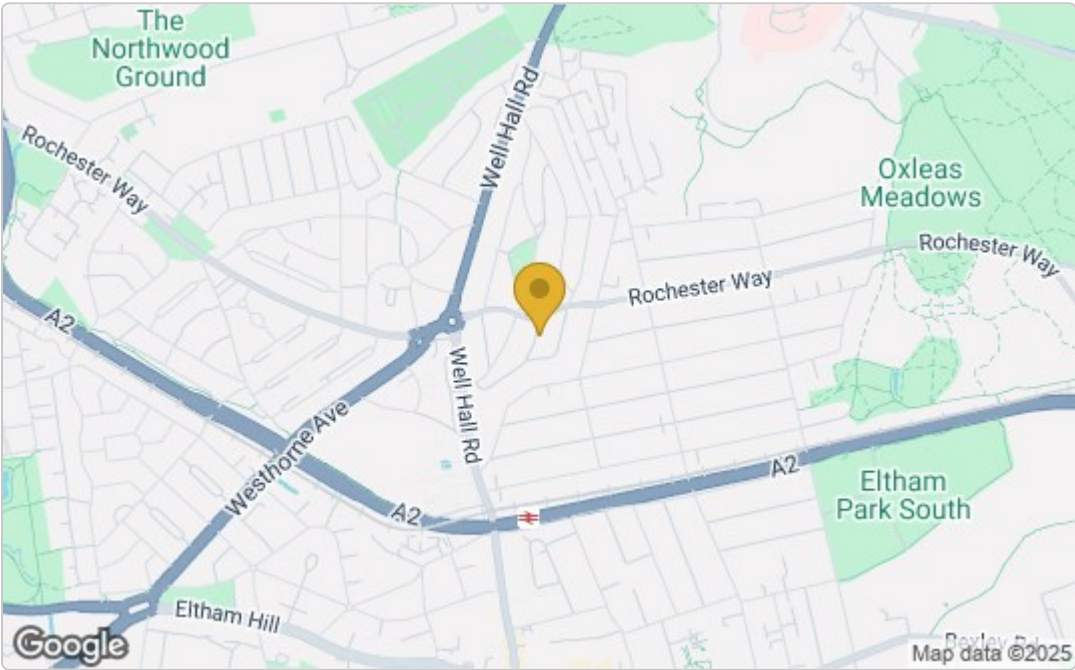
Approximate Gross Internal Area = 821 sq ft / 76.3 sq m



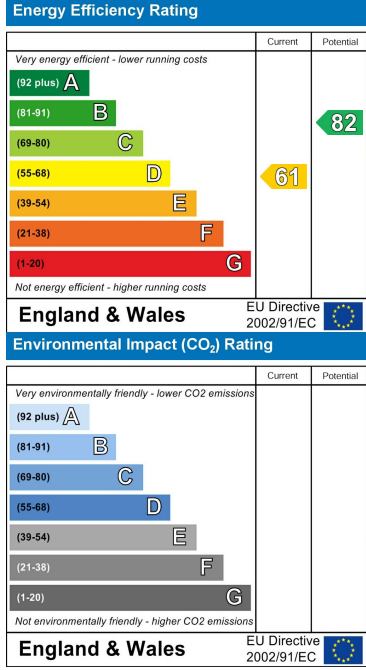
First Floor

This plan is for layout guidance only and not drawn to scale unless stated. Window and door openings are approximate. Whilst every care is taken in the preparation of this plan, we would advise interested parties to check all dimensions, shapes and compass bearings prior to making any decisions reliant upon them. No liability is accepted for any errors. By www.Prime Square Photography.com / Copyright 2025

Area Map



Energy Efficiency Graph



These particulars, whilst believed to be accurate are set out as a general outline only for guidance and do not constitute any part of an offer or contract. Intending purchasers should not rely on them as statements of representation of fact, but must satisfy themselves by inspection or otherwise as to their accuracy. No person in this firms employment has the authority to make or give any representation or warranty in respect of the property.