



1 Revel Road, Higher Compton, Plymouth, Devon, PL3 5LF

# Price £294,000



Set within the sought-after residential area of Higher Compton, this elegant period property offers a rare opportunity to acquire a beautifully presented and character-filled family home. Perfectly located close to local amenities, a highly regarded primary school, and excellent transport links, this charming residence is ready for immediate occupation with no onward chain.

From the moment you step inside, the home impresses with a grand and welcoming entrance hallway, featuring traditional design elements that reflect the home's timeless appeal. High ceilings, original features, and an abundance of natural light set the tone for the bright and spacious interiors throughout.

The ground floor offers versatile and well-proportioned living spaces, including a generous front living room with large windows that bathe the room in natural light—creating a warm and inviting atmosphere, perfect for both relaxation and entertaining. A formal dining room provides the ideal setting for family meals or dinner parties, while the modern, well-appointed kitchen blends style and practicality with ample worktop space, quality fittings, and plenty of storage.

A convenient downstairs WC enhances the functionality of the ground floor, while internal access to a large attached garage offers secure parking, additional storage, or exciting potential for conversion (subject to the necessary consents). From the garage, step out onto a spacious side patio, ideal for alfresco dining, entertaining, or simply soaking up the sunshine.

Upstairs, the property continues to delight with three generously sized double bedrooms, each filled with natural light and offering ample room for furnishings and personal touches. A stylish modern shower room completes the first-floor accommodation.

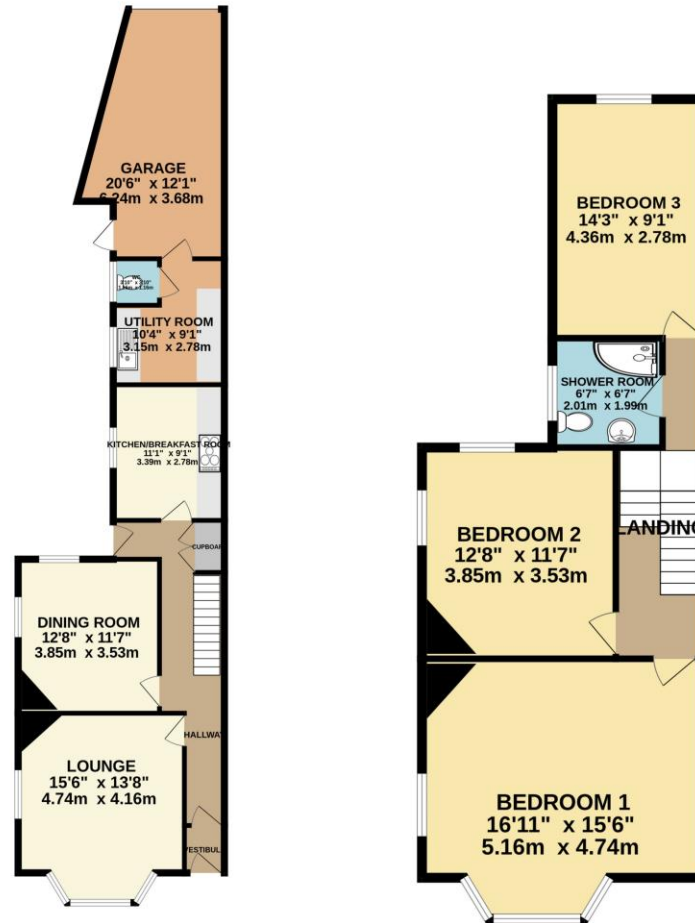
Combining elegant period charm with modern convenience, this delightful home offers exceptional value and flexibility for families, couples, or anyone seeking a spacious home in a prime location. With no onward chain, this property is ready for its next chapter—could it be yours?



To view this property call Lang Town & Country Estate Agents on **01752 256000**.

[www.langtownandcountry.com](http://www.langtownandcountry.com)





TOTAL FLOOR AREA : 1521 sq.ft. (141.3 sq.m.) approx.

Whilst every attempt has been made to ensure the accuracy of the floorplan contained here, measurements of doors, windows, rooms and any other items are approximate and no responsibility is taken for any error, omission or mis-statement. This plan is for illustrative purposes only and should be used as such by any prospective purchaser. The services, systems and appliances shown have not been tested and no guarantee as to their operability or efficiency can be given.  
Made with Metropix ©2025



Lang Town & Country  
6 Mannamead Road  
Plymouth  
PL4 7AA  
Tel: 01752 256000  
Email: [property@langtownandcountry.com](mailto:property@langtownandcountry.com)  
[www.langtownandcountry.com](http://www.langtownandcountry.com)

Lang Town & Country endeavour to ensure the accuracy of property details produced and displayed, we have not tested any apparatus, equipment, fixtures, fittings or services and so cannot verify that they are connected, in working order or fit for purpose. A buyer must check the availability of any property and make an appointment to view before embarking on any journey to see a property.

