



**28 FOXGLOVE LANE  
CHESSINGTON  
KT9 1QD  
£450,000**

**EXTENDED END TERRACE HOUSE**

**TWO BEDROOMS**

**14'7 X 13'11 LIVING ROOM**

**11'9 X 9'1 CONSERVATORY**

**9' X 7'7 KITCHEN**

**DOUBLE GLAZED WINDOWS**

**GAS CENTRAL HEATING**

**42' SOUTHERLY FACING LANDSCAPED GARDEN**

**17'3 X 14'9 GARAGE TO THE REAR**

**WELL PRESENTED**

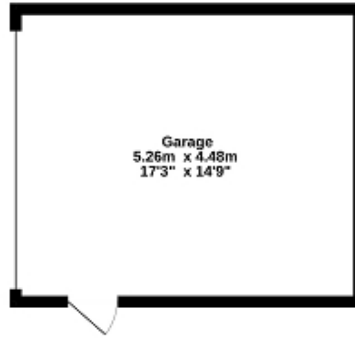
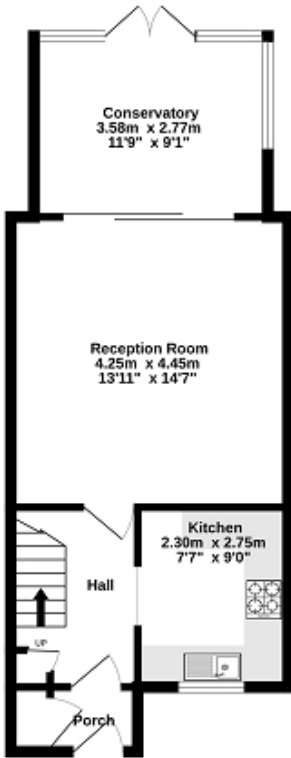
**CUL DE SAC LOCATION**

**AN IDEAL FIRST TIME BUY**

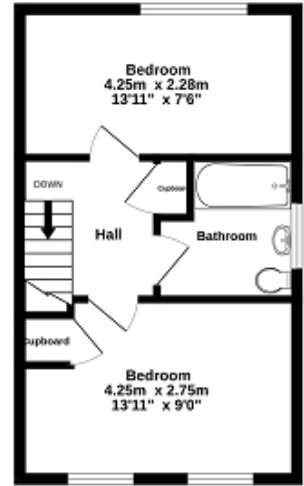
Telephone  
020 8397 5151

Email  
chessington@compasssea.co.uk  
Website  
www.compasssea.co.uk

Ground Floor  
66.3 sq.m. (714 sq.ft.) approx.



1st Floor  
30.8 sq.m. (332 sq.ft.) approx.



TOTAL FLOOR AREA: 97.1 sq.m. (1045 sq.ft.) approx.

Whilst every attempt has been made to ensure the accuracy of the floorplan contained here, measurements of doors, windows, rooms and any other items are approximate and no responsibility is taken for any error, omission or mis-statement. This plan is for illustrative purposes only and should be used as such by any prospective purchaser. The services, systems and appliances shown have not been tested and no guarantee as to their operability or efficiency can be given.  
Made with Metropix ©2020



### Energy Efficiency Rating

	Current	Potential
<i>Very energy efficient - lower running costs</i>		
(92+) <b>A</b>		
(81-91) <b>B</b>		87
(69-80) <b>C</b>	73	
(55-68) <b>D</b>		
(39-54) <b>E</b>		
(21-38) <b>F</b>		
(1-20) <b>G</b>		
<i>Not energy efficient - higher running costs</i>		
<b>England, Scotland &amp; Wales</b>	EU Directive 2002/91/EC	

The energy efficiency rating is a measure of the overall efficiency of a home. The higher the rating the more energy efficient the home is and the lower the fuel bills will be.