



Lancaster Grove | London | NW3

£669 Per Week |

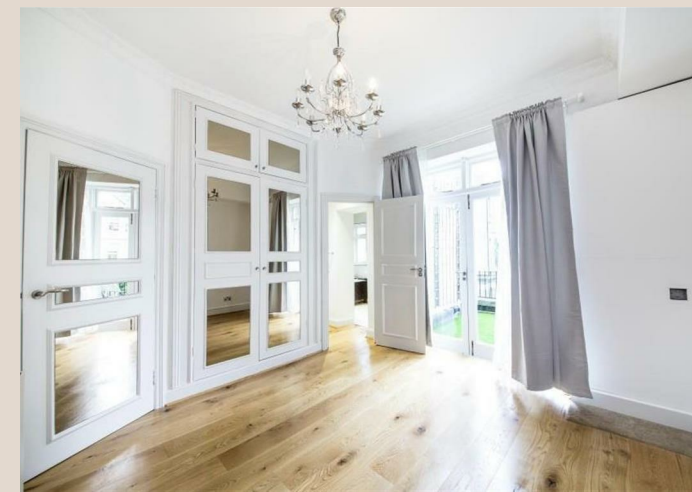
 2  2  1  D

ADN
RESIDENTIAL

A bright and well appointed two bedroom apartment arranged over the first floor of a handsome period property located in Belsize Park. Offering high ceilings this wonderful home comprises, spacious reception room with bay window, separate fully fitted kitchen, principal bedroom with built in wardrobes, access to a private roof terrace and en-suite bathroom, second smaller bedroom and a family shower room. Lancaster Grove is ideally positioned 0.2m for Belsize Park & Swiss Cottage Underground Stations.

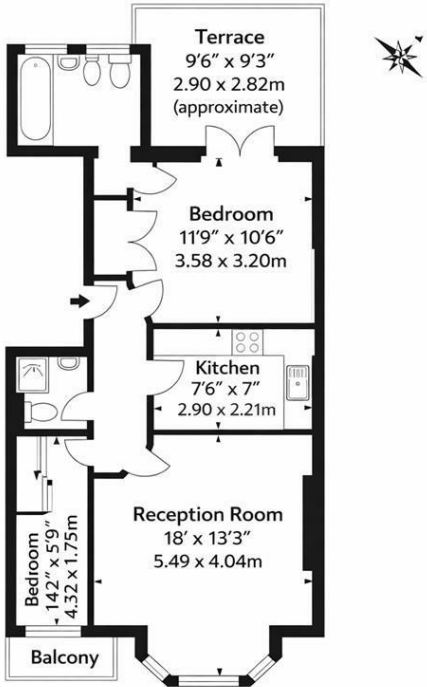
-
- Roof Terrace
 - Separate Kitchen
 - Two Bathrooms
 - Permit Parking
 - Spacious Reception Room
 - Two Bedrooms
 - Wooden Flooring
-

Council Tax Band: E
EPC: C

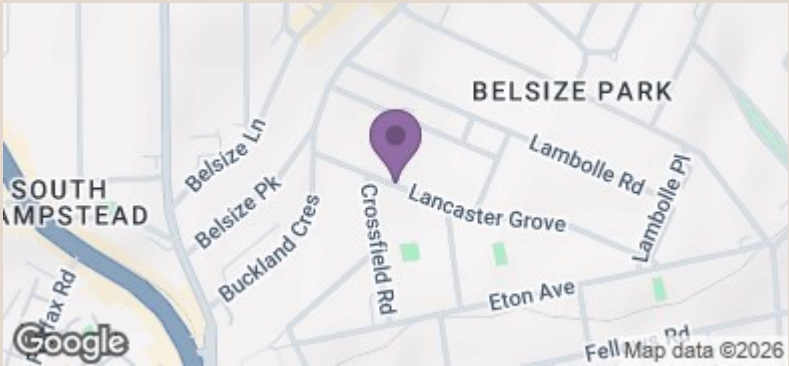




Lancaster Grove, NW3



Approx Sross Internal Area
666 Sq Ft - 61.87 Sq M



Energy Efficiency Rating		Current	Potential
Very energy efficient - lower running costs			
(92 plus) A			76
(81-91) B			
(69-80) C			
(55-68) D		63	
(39-54) E			
(21-38) F			
(1-20) G			
Not energy efficient - higher running costs			
England & Wales		EU Directive 2002/91/EC	