



## Orleston Mews, N7

£800,000

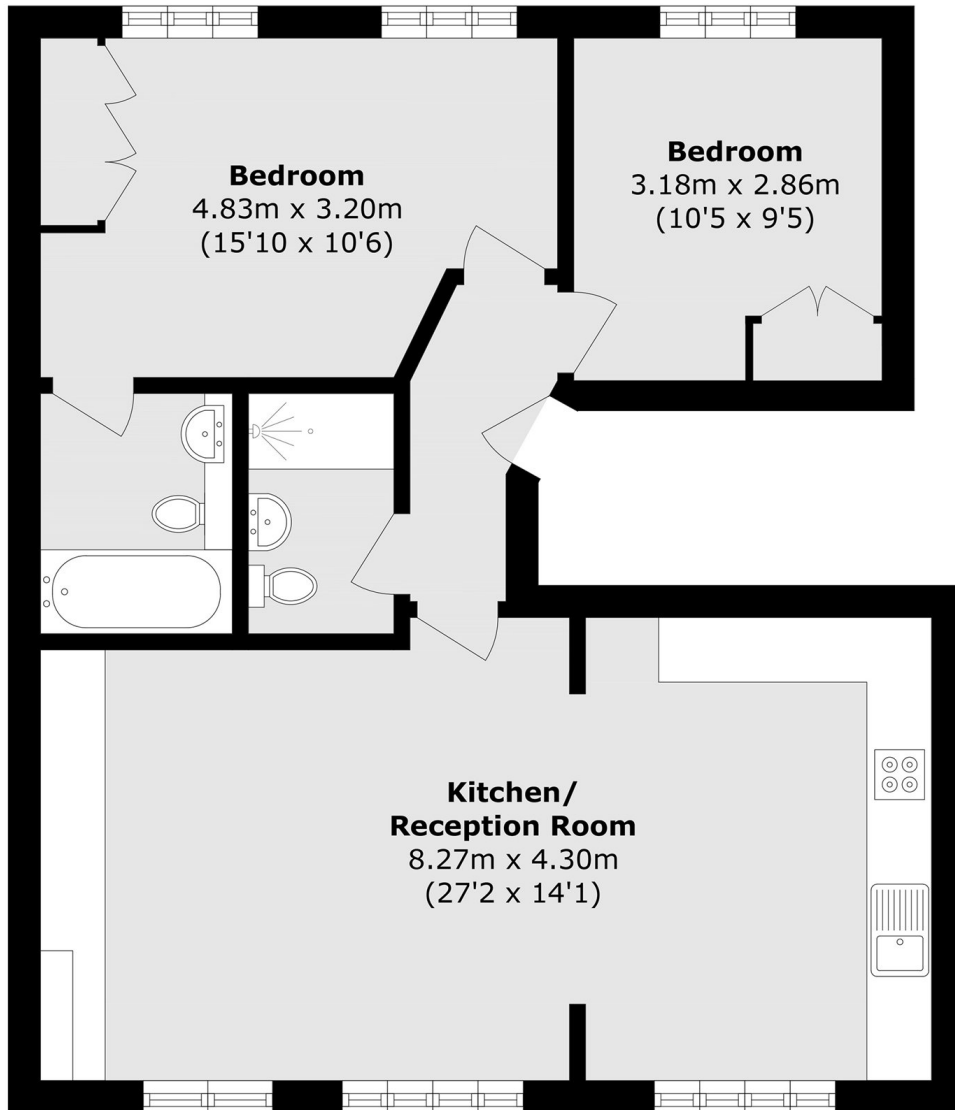
A lateral two bed warehouse conversion on a quiet mews road. The flat benefits from an abundance of light has two large bedrooms, two bathrooms, wooden flooring and an open-plan living space. Orleston Mews is less than 0.3 miles to the nearest station

The flat is in a quiet spot, but is still less than 250m from Highbury and Islington station for the Victoria line and overground options, as well as Islington's bustling Upper Street which has a great selection of shops, bars and restaurants.

### Features

- Warehouse Conversion
- Two Double Bedrooms
- Two Bathrooms
- Open-Plan Living
- Wood Flooring
- Parking Available

# Orleston Mews, London, N7



Total area (approx.): 70.1 sq. m (754.5 sq. ft)