



11 Whitby Crescent, Crownhill, Plymouth, Devon, PL6 5LD



Price £350,000



Situated in a pleasant cul-de-sac location, this attractive semi-detached family home offers spacious and beautifully presented accommodation, ideally positioned close to highly regarded schools, local parks, and the popular Crownhill shopping area.

The welcoming entrance hallway, featuring stylish parquet flooring, sets the tone for the rest of this charming home. The delightful lounge enjoys a feature fireplace and French doors opening onto the rear garden, creating a bright and inviting living space. The semi-open-plan kitchen/dining room provides an excellent environment for both everyday family life and entertaining, with a charming dining area and a well-equipped fitted kitchen complete with a range cooker and integrated dishwasher. A useful utility room and a contemporary wet room further enhance the practicality of the ground floor accommodation.

Upstairs, there are three well-proportioned bedrooms, all benefiting from built-in storage. Bedroom three features fitted bunk beds and additional storage, making it an ideal children's room. A modern family shower room completes the first-floor layout.

Externally, the property boasts a long driveway, a garage, and a lovely level enclosed rear garden, perfect for family enjoyment, outdoor dining, and relaxation.

This is an excellent opportunity to acquire a comfortable and well-maintained family home in a highly sought-after residential location.

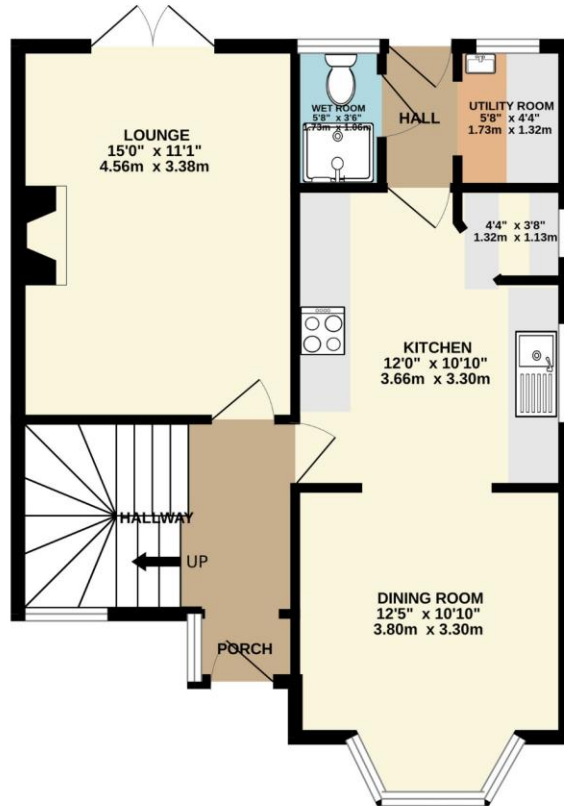


To view this property call Lang Town & Country Estate Agents on **01752 256000**.

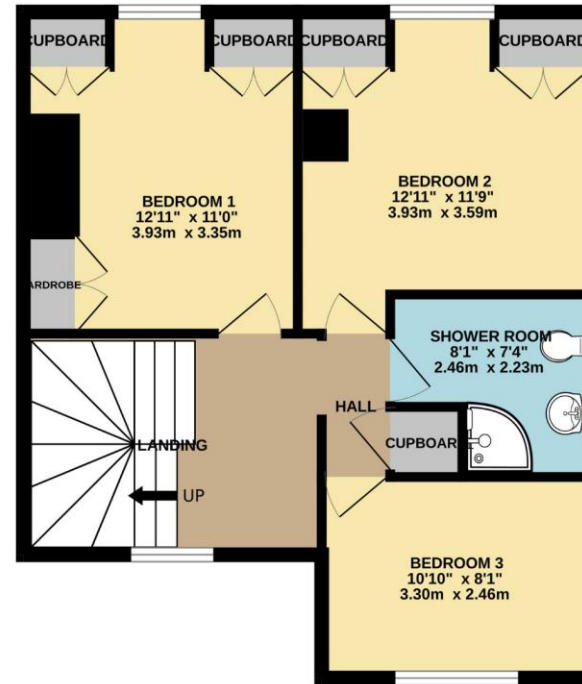
www.langtownandcountry.com



GROUND FLOOR
570 sq.ft. (52.9 sq.m.) approx.



1ST FLOOR
535 sq.ft. (49.7 sq.m.) approx.



TOTAL FLOOR AREA : 1105 sq.ft. (102.7 sq.m.) approx.

Whilst every attempt has been made to ensure the accuracy of the floorplan contained here, measurements of doors, windows, rooms and any other items are approximate and no responsibility is taken for any error, omission or mis-statement. This plan is for illustrative purposes only and should be used as such by any prospective purchaser. The services, systems and appliances shown have not been tested and no guarantee as to their operability or efficiency can be given.
Made with Metropix ©2026



Lang Town & Country
6 Mannamead Road
Plymouth
PL4 7AA
Tel: 01752 256000
Email: property@langtownandcountry.com
www.langtownandcountry.com

Lang Town & Country endeavour to ensure the accuracy of property details produced and displayed, we have not tested any apparatus, equipment, fixtures, fittings or services and so cannot verify that they are connected, in working order or fit for purpose. A buyer must check the availability of any property and make an appointment to view before embarking on any journey to see a property.

