

SCOTT
PARRY

— ASSOCIATES —
SELLING HOMES THAT FULFIL YOUR LIFESTYLE

WOODBIDGE SHUTTA ROAD, LOOE, PL13 1HW

£287,500





Commanding a stunning 180 degree prospect over the Looe Estuary and only 600 yards from the beach, a semi-detached and bay fronted Victorian villa offering spacious accommodation over three floors. About 1448 sq ft, Sitting/Dining Room, Kitchen, Laundry Room, 5 Bedrooms, Shower Room/WC, Verandah, Rear Garden.

HARBOURSIDE 275 YARDS, BEACH 600 YARDS, FOWEY 10 MILES, PLYMOUTH 21 MILES



LOCATION

The property lies only 275 yards from the picturesque and historic harbour and the famous seven arch bridge, with the town beach and Hannafore beach also closeby. This elevated position allows a distracting panorama with tidal seafaring traffic including trawlers, day boats and leisure craft constantly in view.

Looe straddles the wide river with its long bridge and stone harbourside, with a thriving tourist industry and is popular with boating enthusiasts.

Parts of the neighbouring coastline are in the ownership of the National Trust. Close to the beach and the South West Coast Path the location will suit those seeking to pursue the seaside lifestyle. The quiet Plaidy Beach has a slipway and provides a superb environment for bathing, kayaking and snorkelling.

There are a wide range of shopping and community facilities, on both sides of the river, together with award winning restaurants. On the edge of the town is a branch line railway which links with the main line at Liskeard (Plymouth to London Paddington 3 hours).

The City of Plymouth lies within commuting distance, having an extensive and historic waterfront.

Golf is available at Portwrinkle, St Mellion International Golf Resort, or Looe Bindown. The sailing waters of the area are favoured by yachtsmen and deep water moorings are available on the Rivers Lynher and Tamar at St Germans, Saltash and Fowey/Polruan. Saltash has a Waitrose store and the city of Plymouth offers an abundance of facilities centred around the historic and fascinating waterfront areas of the Barbican and Hoe. The ferryport provides regular crossings to France and Northern Spain.

The Tamar Valley AONB, the surfing beaches of North Cornwall, historic country houses and many other places of interest lie within an easy drive.







DESCRIPTION

Woodbridge comprises a semi-detached Victorian villa in a prized and established residential area, west facing and elevated the property commands a stunning 180 degree prospect spanning from the pretty harbourside area across the river to the confluence of the East and West Looe Rivers and the verdant wooded valley sides beyond. A truly awe inspiring view with fabulous sunsets from the terrace.

The property would benefit from some improvement and will be found to be almost fully double glazed and has mains gas central heating.

The accommodation extends to about 1448 sq ft over three floors and briefly comprises - GROUND FLOOR - Lobby - Reception Hall - 25' Sitting/Dining Room with wide bay window and fine views - Kitchen - Laundry Room - FIRST FLOOR - 14' Principal Bedroom with bay window and Balcony off - 2 Further Bedrooms - Shower Room/WC - Separate WC - SECOND FLOOR - 2 Bedrooms (Total 5 Bedrooms).

OUTSIDE

Small front garden and a lovely west facing small verandah providing a fine vantage point to absorb the river and wooded estuary views. Rear courtyard and steps up to a rear garden with mature apple tree. There is a pedestrian right of way over the courtyard in favour of the neighbour at Silver Birch.

EPC RATING - D, COUNCIL TAX BAND - C

SERVICES - Mains water, electricity, drainage and gas.

DIRECTIONS

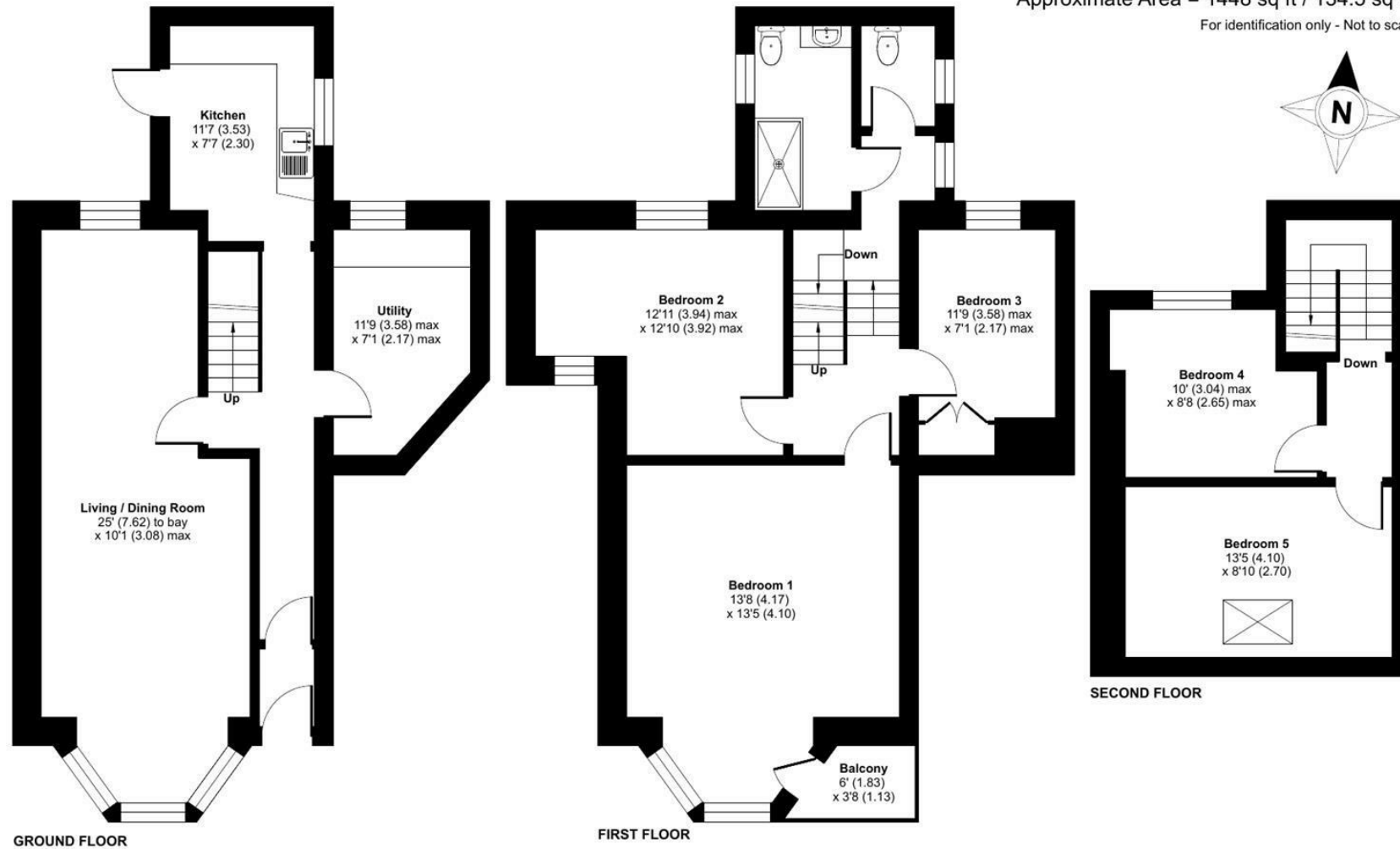
Using Sat Nav - Postcode PL13 1HW - Time limited on street parking is available or use the harbour car park.



Woodbridge, Shutta Road, Looe, PL13

Approximate Area = 1448 sq ft / 134.5 sq m

For identification only - Not to scale



 Floor plan produced in accordance with RICS Property Measurement 2nd Edition, Incorporating International Property Measurement Standards (IPMS2 Residential). © nitchecom 2026. Produced for Scott Parry Associates. REF: 1448579

These particulars should not be relied upon.