

FOLKLANDS



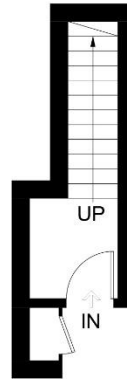
TIDENHAM GARDENS, CROYDON
MONTHLY RENTAL OF £1,625



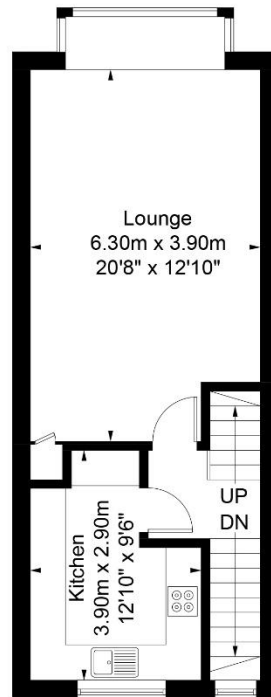


Tidenham Gardens, Croydon

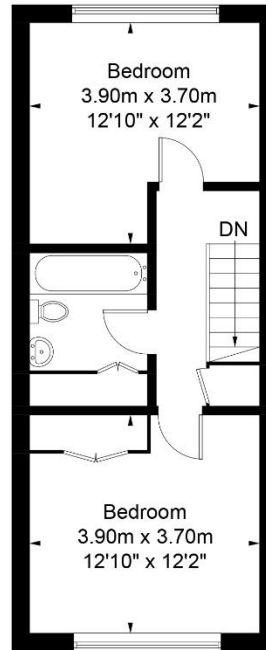
Approximate Gross Internal Area (Including Cupboard)
86.4 sq m / 930 sq ft



Ground Floor (Including Cupboard)
5.6 sq m / 60 sq ft



First Floor
40.4 sq m / 435 sq ft



Second Floor
40.4 sq m / 435 sq ft

Illustration for identification purposes only, measurements are approximate, not to scale. FloorplansUsketch.com © 2016 (ID301066)

INFO@FOLKLANDS.COM - 020 8686 0002

362 BRIGHTON ROAD - SOUTH CROYDON - CR2 6AL

- ❖ AVAILABLE 13TH OF JULY 2026
- ❖ UNFURNISHED
- ❖ OVER 900 SQFT OF ACCOMMODATION
- ❖ HIGHLY DESIRABLE PARK HILL LOCATION
- ❖ 0.5 MILES FROM EAST CROYDON TRAIN STATION
- ❖ OFF ROAD PARKING FOR ONE CAR (VIA A PERMIT)
- ❖ 0.3 MILES FROM PARK HILL INFANT & JUNIOR SCHOOLS
- ❖ SPLIT LEVEL ACCOMMODATION
- ❖ PRIVATE ENTRANCE
- ❖ EPC EER C



**** Available 13th of July 2026 **** A superbly presented two double bedroom split level maisonette, situated in the desirable Park Hill area of Croydon, which is conveniently located only 0.5 miles from East Croydon mainline train station.

Offered to the market unfurnished, this larger than average property offers in excess of 900 SQFT of accommodation, benefits from a private entrance, good décor throughout, it is fully double glazed, has ample storage space and there is the facility of parking one car off-road with the use of a permit.

The accommodation comprises two large double bedrooms both with ample wardrobe space (one built-in & one free-standing), a three-piece bathroom suite, a separate fitted kitchen with dishwasher & fridge/ freezer included, and a 20' open plan lounge/ dining room with a large window providing pleasant views over the communal grounds.

Furthermore, this property sits within close proximity of the highly regarded Park Hill Infant & Junior Schools, benefits from being a short distance from the local convenience store and only a few minutes away from the open green spaces of both Park Hill Park and Lloyd Park.

