



Ogle Street, W1W

£1,150 Per week

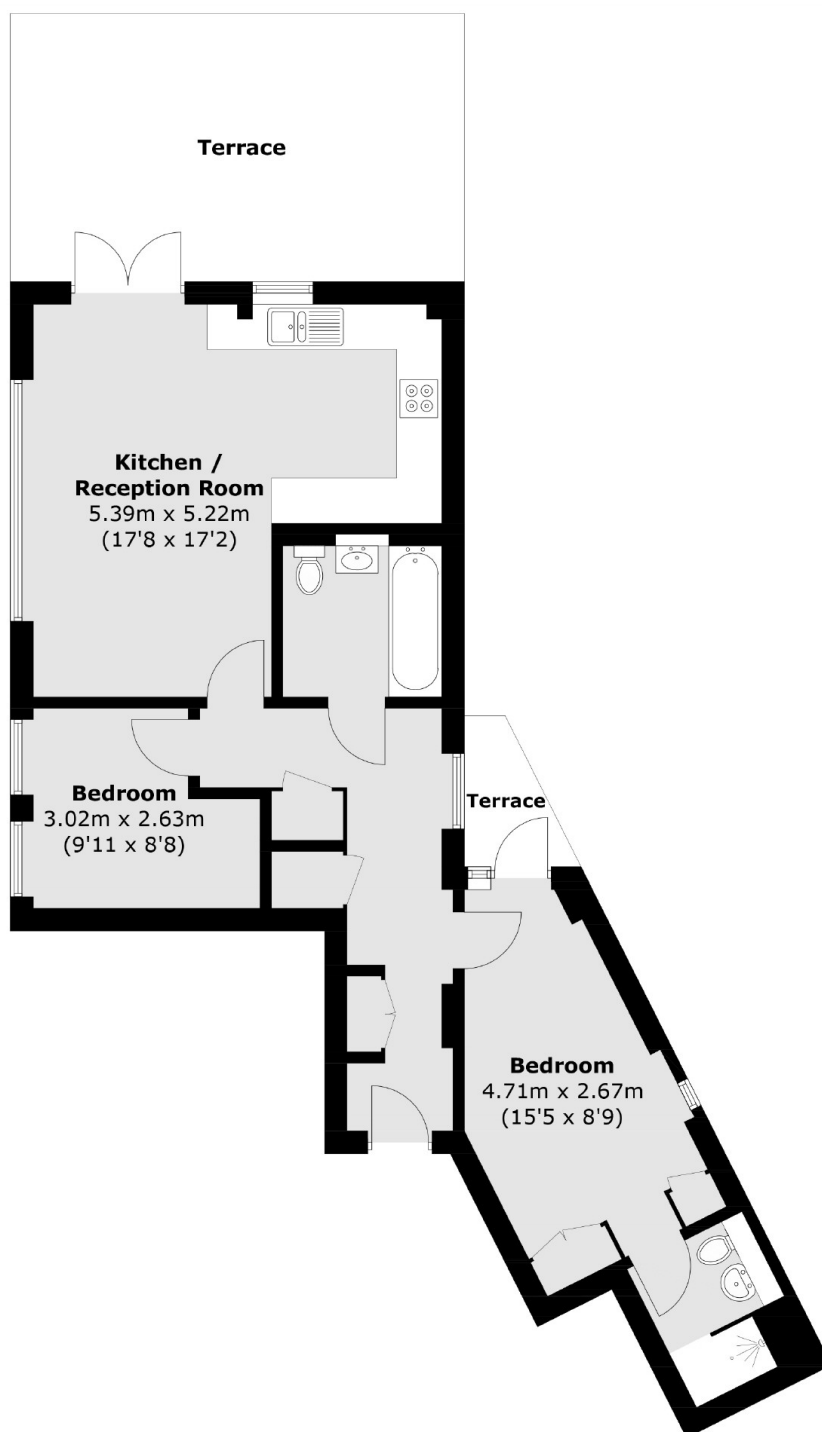
A stunning penthouse apartment with a large private roof terrace located in the heart of the West End. This two double bedroom, two bathroom property has floor to ceiling windows with far reaching views across Central London. The bright and spacious open planned living space leads out to the terrace which wraps around three sides of the building. The property features high ceilings, resides on the top floor and has lift access. The master bedroom benefits from an additional balcony and the kitchen has fully integrated appliances. This property's unique combination of features and benefits provides a rare opportunity.

Ogle Street is located just a short walk from Oxford Circus, Goodge Street and Tottenham Court Road Underground Stations and the open spaces of Regents Park. Charlotte Street with its vast array of restaurants and art galleries is also just a short walk away.

Features

- Two Bedroom / Two Bathroom
- Large Private Roof Terrace
- Floor to Ceiling Windows
- Quiet Secluded Street
- Views over Central London
- Penthouse with Lift

Ogle Street, London, W1W



Total area (approx.): 64.8 sq. m (697.5 sq. ft)
Terrace area (approx.): 23.4.0 sq. m (251.9 sq. ft)