



Westbury Leigh, Westbury BA13 3SH

welcome to

Westbury Leigh, Westbury

This charming semi-detached cottage offers character features and a generous rear garden with a powered summerhouse, close to local amenities and the train station. Inside is a cosy sitting room, bright vaulted kitchen–diner, modern bathroom, and spacious bedroom.

Ground Floor

Living Room

Step through the front door into a welcoming living room filled with natural light from the double-glazed front window. A charming wood-burner creates a cosy focal point, complemented by a feature ceiling beam, radiator, TV point, and handy understairs storage tucked underneath the staircase.

Kitchen/ Diner

A charming cottage-style kitchen/diner with direct access to the porch and garden. Light pours in through the rear double-glazed window and Velux roof window, brightening the space. The room offers a range of wall and base units, a sink with drainer, a useful pantry, and a freestanding double oven with gas hobs and extractor hood. There is plumbing for a washing machine, along with space for a fridge/freezer and a dining table perfect for relaxed family meals.

Bathroom

A bright and airy ground-floor bathroom featuring frosted double-glazed windows to the side and rear for added privacy. The space includes a WC, wash hand basin, and a bathtub with a central faucet and shower overhead. Partially tiled walls and a heated towel radiator add both practicality and comfort.

First Floor

Bedroom

A generous double bedroom, featuring a double-glazed window at the front of the home that fills the room with natural light. A charming exposed-brick feature fireplace adds character, while a loft hatch and radiator provide practicality and comfort.





Outside

Garden

The property features a gated front courtyard and an attractively landscaped rear garden, complete with flower borders, a small pond, two timber sheds, a decked seating area, a chicken enclosure, and a powered studio/summerhouse perfect for use as a home office or peaceful retreat.

Parking

On street and communal parking.



view this property online [allenandharris.co.uk/Property/WST108049](https://www.allenandharris.co.uk/Property/WST108049)



welcome to

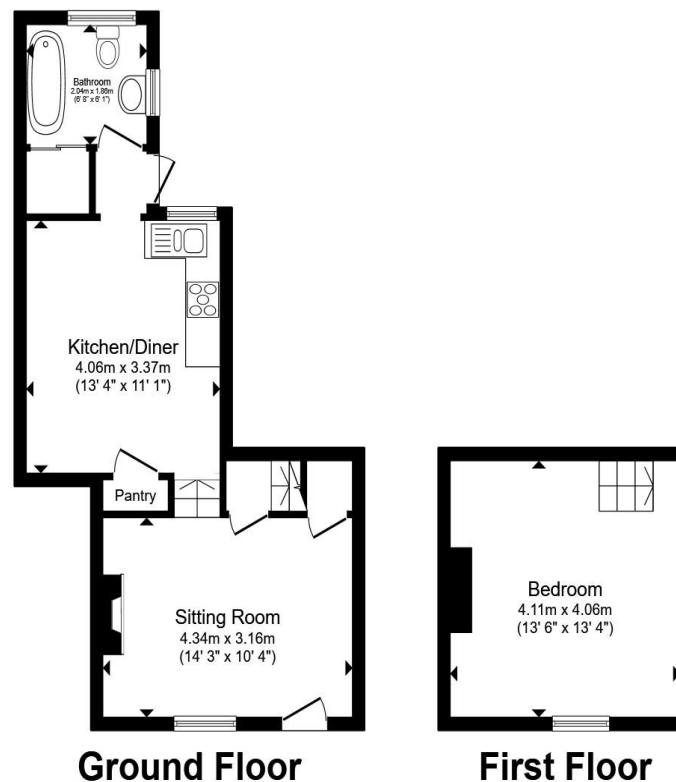
Westbury Leigh, Westbury

- One Bedroom Semi-Detached Cottage
- Character Features Throughout
- Front & Rear Gardens
- Summerhouse With Power
- Street & Communal Parking

Tenure: Freehold EPC Rating: F

Council Tax Band: A

£180,000



Total floor area 53.4 m² (575 sq.ft.) approx

This floor plan is for illustrative purposes only. It is not drawn to scale. Any measurements, floor areas (including any total floor area), openings and orientation are approximate. No details are guaranteed, they cannot be relied upon for any purpose and they do not form part of any agreement. No liability is taken for any error, omission or misstatement. A party must rely upon its own inspection(s). Powered by www.propertybox.io

 allen & harris

view this property online allenandharris.co.uk/Property/WST108049



Property Ref:
WST108049 - 0003

1. MONEY LAUNDERING REGULATIONS Intending purchasers will be asked to produce identification documentation at a later stage and we would ask for your co-operation in order that there is no delay in agreeing the sale. 2. These particulars do not constitute part or all of an offer or contract. 3. The measurements indicated are supplied for guidance only and as such must be considered incorrect. Potential buyers are advised to recheck measurements before committing to any expense. 4. We have not tested any apparatus, equipment, fixtures or services and it is in the buyers interest to check the working condition of any appliances. 5. Where an EPC, or a Home Report (Scotland only) is held for this property, it is available for inspection at the branch by appointment. If you require a printed version of a Home Report, you will need to pay a reasonable production charge reflecting printing and other costs. 6. We are not able to offer an opinion either written or verbal on the content of these reports and this must be obtained from your legal representative. 7. Whilst we take care in preparing these reports, a buyer should ensure that his/her legal representative confirms as soon as possible all matters relating to title including the extent and boundaries of the property and other important matters before exchange of contracts.

Allen & Harris is a trading name of Sequence (UK) Limited which is registered in England and Wales under company number 4268443, Registered Office is Cumbria House, 16-20 Hockliffe Street, Leighton Buzzard, Bedfordshire, LU7 1GN. VAT Registration Number is 500 2481 05.

 allen & harris



01373 822457



Westbury@allenandharris.co.uk



15A Warminster Road, WESTBURY, Wiltshire,
BA13 3PD



allenandharris.co.uk